



This is a peer-reviewed, final published version of the following document and is licensed under Creative Commons: Attribution 4.0 license:

**Al-Saedi, Fitua, Stones, Daniel H ORCID logoORCID:  
<https://orcid.org/0000-0002-8981-7943>, Vaz, Diana Pereira,  
Krachler, Anne Marie and Payne, S. M. (2016) Displacement of  
Pathogens by an Engineered Bacterium Is a Multifactorial  
Process That Depends on Attachment Competition and  
Interspecific Antagonism. *Infection and Immunity*, 84 (6). pp.  
1704-1711. doi:10.1128/IAI.00020-16**

Official URL: <https://doi.org/10.1128/IAI.00020-16>

DOI: <http://dx.doi.org/10.1128/IAI.00020-16>

EPrint URI: <https://eprints.glos.ac.uk/id/eprint/6065>

#### **Disclaimer**

The University of Gloucestershire has obtained warranties from all depositors as to their title in the material deposited and as to their right to deposit such material.

The University of Gloucestershire makes no representation or warranties of commercial utility, title, or fitness for a particular purpose or any other warranty, express or implied in respect of any material deposited.

The University of Gloucestershire makes no representation that the use of the materials will not infringe any patent, copyright, trademark or other property or proprietary rights.

The University of Gloucestershire accepts no liability for any infringement of intellectual property rights in any material deposited but will remove such material from public view pending investigation in the event of an allegation of any such infringement.

PLEASE SCROLL DOWN FOR TEXT.

# Displacement of Pathogens by an Engineered Bacterium Is a Multifactorial Process That Depends on Attachment Competition and Interspecific Antagonism

Fitua Al-Saedi, Daniel Henry Stones, Diana Pereira Vaz, Anne Marie Krachler

Institute of Microbiology and Infection, School of Biosciences, University of Birmingham, Edgbaston, Birmingham, United Kingdom

**Pathogen attachment to host cells is a key process during infection, and inhibition of pathogen adhesion is a promising approach to the prevention of infectious disease. We have previously shown that multivalent adhesion molecules (MAMs) are abundant in both pathogenic and commensal bacterial species, mediate early attachment to host cells, and can contribute to virulence. Here, we investigated the efficacy of an engineered bacterium expressing a commensal MAM on its surface in preventing pathogen attachment and pathogen-mediated cytotoxicity in a tissue culture infection model. We were able to dissect the individual contributions of adhesion and interspecific antagonism on the overall outcome of infection for a range of different pathogens by comparison with the results obtained with a fully synthetic adhesion inhibitor. We found that the potential of the engineered bacterium to outcompete the pathogen is not always solely dependent on its ability to hinder host attachment but, depending on the pathogenic species, may also include elements of interspecific antagonism, such as competition for nutrients and its ability to cause a loss of fitness due to production of antimicrobial factors.**

The spread of antibiotic-resistant bacteria is a rising problem and one likely to persist due to the intrinsic mechanism of action of antibiotics generating selective pressure on bacterial populations. As a potential way of addressing this challenge, much work has focused on alternative ways to prevent and treat bacterial infections, including antivirulence approaches (1). These encompass strategies which target the bacterium's ability to colonize and cause disease in a host without interfering with growth or viability (2). Since initial attachment to eukaryotic cells and tissues is an essential early step during colonization of a host, a focus of antivirulence strategies has been the development of adhesion inhibitors (3). A wide range of living (probiotic or engineered), semisynthetic, or fully synthetic adhesion inhibitors has been developed, and ongoing work now focuses on understanding and improving their efficacy (4–6).

Prior work by our group has investigated the use of live and semisynthetic inhibitors based on multivalent adhesion molecules (MAMs), which are an abundant family of bacterial adhesins contributing to initial attachment and virulence in a range of pathogens (7). A related family of mammalian cell entry (MCE) domain-containing proteins is involved in invasion of host cells by mycobacteria and *Leptospira* spp. (8–10), and peptides targeting this interaction inhibit the uptake of *Mycobacterium tuberculosis* by host cells (11). Early work focused on materials based on MAM7 from the seafood-borne pathogen *Vibrio parahaemolyticus*, which demonstrated good efficacy against a broad range of Gram-positive and Gram-negative bacterial infections both *in vitro* and *in vivo* (7, 12–15). Nonadherent *Escherichia coli* BL21 cells expressing *V. parahaemolyticus* MAM7 on their surface showed specific adhesion to a range of eukaryotic cells and could prevent infection with *V. parahaemolyticus*, *Vibrio cholerae*, *Yersinia pseudotuberculosis*, or enteropathogenic *E. coli* (EPEC) (7). Subsequent work showed that this effect could be recapitulated by using a semisynthetic material consisting of recombinant MAM7 chemically coupled to polystyrene beads and that the material efficiently displaced a wider range of clinically relevant pathogens,

including Gram-positive bacteria (12, 14). However, *V. parahaemolyticus* MAM7 was recently shown to interfere with cellular signaling in intestinal epithelial cells and to increase the permeability of intestinal cell junctions *in vitro*, on the basis of its ability to bind to and cluster the signaling lipid phosphatidic acid in host cells (16, 17). Thus, we set out to characterize a putative MAM protein from a well-characterized intestinal commensal, *Escherichia coli* strain HS, regarding its ability to mediate attachment and displace pathogens from host cells during infection. The *E. coli* MAM is a protein consisting of 879 amino acids and, like *V. parahaemolyticus* MAM7, comprises seven MCE domains. However, the overall sequence conservation between the two proteins is low (35%), and ongoing experiments investigating the biochemistry of *E. coli* MAM-receptor interactions suggest that, unlike *V. parahaemolyticus* MAM7, *E. coli* MAM does not utilize phosphatidic acids as a host surface receptor (unpublished results) and therefore may not have the same adverse effects on host cellular signaling.

By using both a live, engineered bacterium and a semisynthetic adhesion inhibitor based on the recombinant MAM protein, we were able to dissect the inhibitory effects of the MAM protein on pathogens and attribute them to either competitive adhesion by MAM-based materials or synergistic effects derived from the en-

Received 7 January 2016 Returned for modification 20 February 2016

Accepted 15 March 2016

Accepted manuscript posted online 21 March 2016

**Citation** Al-Saedi F, Stones DH, Vaz DP, Krachler AM. 2016. Displacement of pathogens by an engineered bacterium is a multifactorial process that depends on attachment competition and interspecific antagonism. *Infect Immun* 84:1704–1711. doi:10.1128/IAI.00020-16.

**Editor:** S. M. Payne

Address correspondence to Anne Marie Krachler, a.krachler@bham.ac.uk.

Copyright © 2016 Al-Saedi et al. This is an open-access article distributed under the terms of the [Creative Commons Attribution 4.0 International license](https://creativecommons.org/licenses/by/4.0/).

gineered bacterial strain. This work demonstrates that competitive displacement of pathogens from the host cell surface can be achieved by using multivalent adhesion molecules with different receptor binding specificities and that, depending on the targeted pathogen, synergistic effects may be derived through the use of a live adhesion inhibitor, rather than semisynthetic material. This finding has wider implications not just for the design of future adhesion inhibitors but also for our understanding of polymicrobial interactions with eukaryotic hosts.

## MATERIALS AND METHODS

**Bacterial strains and growth conditions.** The bacterial strains used were *Escherichia coli* BL21 that expressed MAM from *Escherichia coli* HS (MAM<sup>HS</sup>) from a plasmid (pBAD-MAM<sup>HS</sup>) or that was transformed with the empty pBAD plasmid (BL21 control), *Pseudomonas aeruginosa* PAO1, *Enterococcus faecalis* ATCC 49452, and *Staphylococcus aureus* Newman. All strains were grown in Luria Bertani (LB) medium at 37°C prior to infection experiments. The growth medium for BL21 carrying the pBAD plasmids contained 50 µg/ml kanamycin and 0.05% arabinose. For strains transformed with pDP151 expressing mCherry, the medium also contained 100 µg/ml ampicillin. The selective plating media used for determination of the numbers of CFU of specific strains following mixed infections were pseudomonas cetrimide agar for *P. aeruginosa*, Enterococcosel agar for *E. faecalis*, and mannitol salt agar for *S. aureus*.

**Maintenance of tissue culture cells.** HeLa cells were routinely maintained in Dulbecco's modified Eagle's medium (DMEM) supplemented with 10% heat-inactivated fetal bovine serum (HIFBS), 5 mM L-glutamine, 50 µg/ml penicillin, and streptomycin in an atmosphere containing 5% CO<sub>2</sub> at 37°C.

**Construction of MAM<sup>HS</sup> expression vectors.** For recombinant expression and purification of the MAM protein from *E. coli* strain HS (MAM<sup>HS</sup>; GenBank accession number [ABV06236.1](#); GI 157066981) in *E. coli* BL21, the sequence encoding the soluble portion of the protein (residues 45 to 879) was amplified from *E. coli* HS genomic DNA. The following primers, containing 5' BamHI and 3' XhoI restriction sites, were used: 5'-CAGTGGATCCGACAGTTATCAGGACCGG-3' and 5'-CAGTCTC GAGTTATTTGGGAAGCGCAGTACC-3'. The insert was cloned into the pGEX-4T-3 plasmid. For expression of the full-length MAM<sup>HS</sup> protein and surface localization, the complete gene was amplified from *E. coli* HS genomic DNA using the following primers, containing 5' NcoI and 3' HindIII restriction sites: 5'-CAGTCCATGGGACACATGAGTCAGGAA ACG-3' and 5'-CAGTAAGCTTTTATTGGGAAGCGCAGTACC-3'. The insert was cloned into pBAD/Myc-His, with the Amp<sup>r</sup> cassette being replaced by a Kan<sup>r</sup> cassette.

**Expression and purification of GST-MAM<sup>HS</sup> protein.** Ten milliliters of LB medium supplemented with 100 µg/ml ampicillin was inoculated with a colony of *E. coli* BL21 transformed with pGEX-4T-3 containing the MAM<sup>HS</sup> construct and incubated with shaking at 37°C overnight. Following overnight incubation, 5 ml of the LB broth culture was added per 500 ml of autoinduction medium supplemented with 100 µg/ml of ampicillin, grown at 225 rpm and 37°C until the culture reached an optical density at 600 nm (OD<sub>600</sub>) of 0.6 to 0.7, and then incubated at 20°C overnight. Following incubation, the cultures were centrifuged at 6,000 rpm for 10 min. The bacterial pellets were resuspended in 25 ml of glutathione S-transferase (GST) lysis buffer (25 mM Tris, pH 7.5, 150 mM NaCl, 1 mM EDTA, protease inhibitors, lysozyme, DNase I), 20 mM sodium cholate was added, and then the suspension was incubated at 4°C overnight. The suspension was sonicated on ice twice for 60 s each time (5 s on and 5 s off; 60% output) and centrifuged at 10,000 rpm for 30 min at 4°C. The pellets were discarded, and the supernatants were filtered through a 0.45-µm-pore-size filter. Two milliliters of washed glutathione beads was added to the supernatant, and the mixture was rotated at 4°C for 2 h. After the incubation, 20 ml of binding buffer (25 mM Tris, pH 7.5, 150 mM NaCl, 1 mM EDTA) was added to the column containing the beads, and this wash step was repeated twice. Elution buffer (1.5 ml; 10 mM reduced

glutathione, 50 mM Tris-HCl, pH 8.0) was added to the beads, the mixture was incubated for 15 min, and then the elution buffer was drained; this step was repeated twice. Finally, 1.5 ml of elution buffer containing 100 mM reduced glutathione was added to the beads, the mixture was incubated for 15 min, and then the elution buffer was drained. Glutathione was removed from the GST-fusion proteins by dialysis at 4°C overnight. Protein purity was ~90%, as determined by SDS-PAGE.

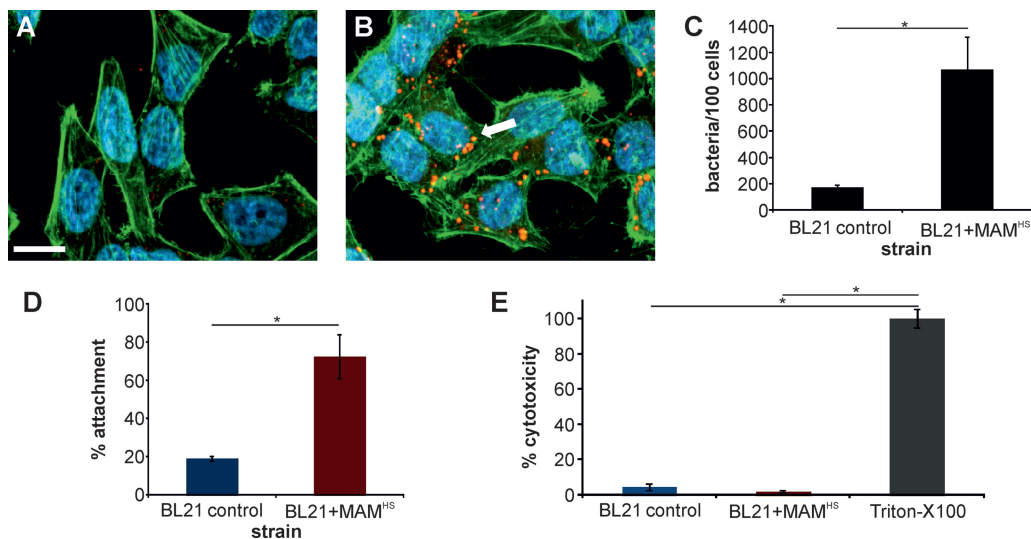
**Coupling of recombinant GST-MAM<sup>HS</sup> protein to polymer beads.** Fluorescent blue beads of 2 µm in diameter (Sigma) were coupled to the GST-MAM<sup>HS</sup> protein or the GST protein (control). The detailed protocol for the coupling procedure has been described elsewhere (18). Briefly, the washed beads were resuspended in phosphate-buffered saline (PBS) and incubated with 10 mM sulfo-succinimidyl 4-(p-maleimidophenyl)butyrate for 1 h at 25°C while they were rotated. After the activated beads were washed, they were resuspended in PBS containing a final concentration of 6 µM protein and incubated for 2 h at 25°C. Cysteine (50 mM) was added to quench the reaction, and the beads were washed twice with PBS and resuspended in fresh PBS to give the final product. The final protein concentration of the protein-coupled beads used in the experiments was 500 nM, and 2 × 10<sup>11</sup> beads/ml were used.

**Attachment assays.** To test the ability of *E. coli* BL21 to adhere to host cells, HeLa cells were seeded at a concentration of 150,000 cells/ml a day prior to the experiment, and *E. coli* BL21 cells transformed with pBAD/Myc-His-MAM<sup>HS</sup> (BL21+MAM<sup>HS</sup>) or empty pBAD (control) were grown in LB broth containing kanamycin on the day before the experiment. For the attachment experiment, *E. coli* BL21 was grown in LB broth containing kanamycin, and when the OD<sub>600</sub> reached 0.6, protein expression was induced by adding arabinose to 0.05% and incubating at 37°C for a further 4 h. HeLa cells were infected with *E. coli* BL21 as a control or *E. coli* BL21+MAM<sup>HS</sup> at a multiplicity of infection (MOI) of 100 for 1 h. Following the infection, the DMEM was removed and the HeLa cells were washed three times with PBS to remove unattached bacteria. Triton X-100 (0.5%) in PBS was added to lyse the HeLa cells, and then serial dilutions were prepared, cultured on LB agar, and incubated at 37°C for 20 h, followed by counting of the number of colonies.

**Competition experiments.** On the day before the experiment, HeLa cells were seeded at a concentration of 150,000 cells/ml into 24-well plates. Wells for untreated HeLa cells (negative control) and for Triton X-100 lysis (positive control) were also prepared. The bacteria were grown in LB broth overnight. When the *E. coli* BL21 strains were used to compete with pathogenic bacteria, on the day of the experiment, the strains were grown and protein expression was induced as described above. Tissue culture cells were washed with PBS prior to the addition of *E. coli* BL21 at an MOI of 100 and either *S. aureus*, *E. faecalis*, or *P. aeruginosa* at an MOI of 10, and the cells were incubated at 37°C for 4 h. When beads were used in competition experiments, HeLa cells were infected by adding the pathogens at an MOI of 10 together with 2 × 10<sup>11</sup> beads/ml (GST or GST-MAM<sup>HS</sup>) containing protein at a final concentration of 500 nM. Following incubation for 4 h, supernatant samples were removed for cytotoxicity measurements, and cells were treated as described below for either counting of attached bacteria or microscopy.

**Cytotoxicity measurements.** The lactate dehydrogenase (LDH) released into the medium was quantified using an LDH cytotoxicity detection kit (TaKaRa), as described in the kit protocol. The data were expressed as the percent cytotoxicity normalized to that for untreated cells (0% lysis) and Triton X-100-lysed cells (100% lysis) and was calculated by the following formula: percent cytotoxicity = 100 × [(OD<sub>490</sub> for experimental release – OD<sub>490</sub> for spontaneous release)/(OD<sub>490</sub> for maximum release – OD<sub>490</sub> for spontaneous release)].

**Quantification of attached bacteria.** Medium was removed and HeLa cells were washed three times with PBS. One milliliter of 0.5% Triton X-100 in PBS was added to each well to lyse the HeLa cells. Serial dilutions of lysed samples were cultured on selective medium as described above, and the colonies were counted after incubation at 37°C for 20 h.



**FIG 1** MAM<sup>HS</sup> mediates adhesion of nonadherent *E. coli* cells to host cells and is nontoxic. (A and B) Attachment of *E. coli* BL21 cells expressing mCherry (red) and transformed with pBAD (A) or pBAD containing MAM from *E. coli* HS (BL21 + MAM<sup>HS</sup>) (B) to HeLa cells. Cells were fixed and stained for actin (green) and DNA (blue) following a 1-h infection. The arrow indicates attached bacteria. Bar, 20  $\mu$ m. (C) The numbers of attached bacteria were quantified by image analysis, and the data represent the means  $\pm$  SEMs based on analysis of at least 300 HeLa cells over three independent experiments. Significance was determined using Student's *t* test. \*,  $P \leq 0.05$ . (D) The attachment of BL21 cells to HeLa cells was also quantified by dilution plating, and the results are expressed in relation to the CFU counts from the input controls (100%). (E) The cytotoxicity of BL21 toward HeLa cells was determined using LDH release assays and is normalized to that toward untreated (0%) and Triton X-100-treated (100%) controls. The results in panels D and E are means  $\pm$  SEMs ( $n = 3$ ), and significance was determined using Student's two-tailed *t* test. \*,  $P \leq 0.05$ .

**Fluorescence microscopy.** Following removal of the supernatants, HeLa cells were washed three times with sterile PBS and fixed using 3.2% formaldehyde in PBS for 15 min at room temperature. After fixation, the cells were washed with PBS and treated with 0.1% Triton X-100 in PBS for 5 min to permeabilize the cells. The cells were then stained with either rhodamine-phalloidin or Alexa Fluor 488-phalloidin and Hoechst for 10 min in the dark. Samples were mounted using ProLong Gold antifade mounting medium and imaged using a Nikon Ti Eclipse microscope. Images were processed using ImageJ and Corel Draw X5 software.

## RESULTS

**Characterization of an engineered bacterium and a synthetic adhesion inhibitor based on an MAM from commensal *E. coli* isolate HS.** As an extension of previous work on multivalent adhesion molecules (MAMs) derived from pathogenic Gram-negative bacterial species (7, 14), we set out to characterize a MAM derived from a commensal *E. coli* isolate and to characterize its potential for and mode of pathogen displacement from host cells in more detail. For this purpose, we constructed two types of materials. First, we constructed a conditionally adhesive strain of *E. coli*, further referred to as BL21 + MAM<sup>HS</sup>. This strain was made by transforming *E. coli* BL21 with a plasmid expressing the MAM from commensal *E. coli* isolate HS from an arabinose-inducible promoter, thus enabling its surface display in BL21 cells. *E. coli* BL21 transformed with pBAD alone served as a negative control. BL21 + MAM<sup>HS</sup> was designed to investigate pathogen displacement from host cells and to capture interactions based on attachment, as well as any additional effects based on intraspecific interactions between BL21 and pathogenic bacteria. Second, we constructed a synthetic material, consisting of polymer beads chemically coupled to recombinant GST-tagged MAM derived from *E. coli* HS (MAM<sup>HS</sup> beads). This was made to capture interactions between MAM and pathogens solely based on attachment

competition and to distinguish these from secondary effects due to intraspecific bacterial interactions. In this case, beads coupled to the GST tag alone (control beads) served as a negative control.

Initially, we characterized the adhesive properties of BL21 + MAM<sup>HS</sup> and BL21 control cells toward host cells using fluorescence imaging (Fig. 1A to C) as well as enumeration of attached bacteria by dilution plating (Fig. 1D). To visualize the attached bacteria, both BL21 control and BL21 + MAM<sup>HS</sup> cells were cotransformed with a plasmid expressing mCherry. The surface expression of MAM<sup>HS</sup> conferred adhesive properties to BL21, with an average of  $1,070 \pm 250$  bacteria being attached per 100 host cells, while BL21 bacteria lacking MAM<sup>HS</sup> showed little attachment (average,  $170 \pm 20$  bacteria per 100 host cells). Enumeration of attached bacteria by dilution plating revealed a similar picture: 19% of the BL21 control bacteria and 73% of the BL21 + MAM<sup>HS</sup> bacteria attached relative to the input amount of bacteria. Neither the BL21 control nor the BL21 + MAM<sup>HS</sup> strain displayed any cytotoxicity toward host cells (Fig. 1E). MAM<sup>HS</sup> beads were also adhesive toward host cells (average, 767 beads/100 cells bound), whereas control beads were not (average, 20 beads/100 cells attached) (Fig. 2).

Since both BL21 + MAM<sup>HS</sup> and MAM<sup>HS</sup> beads were able to adhere to host cells, we next tested their ability to displace three different Gram-positive and Gram-negative bacterial pathogens from the host cell surface. *Pseudomonas aeruginosa*, *Enterococcus faecalis*, and *Staphylococcus aureus* are all causative agents of wound infections and surgical site infections (19–21), and infections caused by these bacteria are increasingly difficult to treat due to intrinsic and acquired antimicrobial resistance (22, 23). Since we are interested in exploiting MAM mimetics to inhibit infections, we characterized the interactions of BL21 + MAM<sup>HS</sup> and MAM<sup>HS</sup> beads with these species and with epithelial cells in detail,



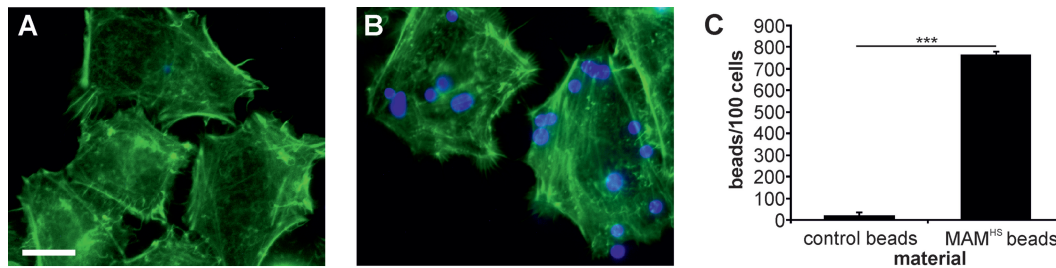


FIG 2 Polymer beads coupled to MAM<sup>HS</sup> adhere to host cells. (A and B) Attachment of polystyrene beads (blue) coupled to GST (A) or GST-MAM<sup>HS</sup> (B) to HeLa cells (F-actin stained green). Bar, 10  $\mu$ m. (C) The numbers of attached bacteria were quantified by image analysis, and data represent the means  $\pm$  SEMs based on analysis of at least 300 HeLa cells over three independent experiments. Significance was determined using Student's *t* test. \*\*\*,  $P \leq 0.001$ .

to test the efficacy and mode of action of both types of inhibitors and evaluate which approach may be more beneficial.

**The inhibitory effect of BL21+MAM<sup>HS</sup> on *Pseudomonas aeruginosa* is solely based on competitive replacement from surface receptors.** HeLa epithelial cells were incubated with *P. aeruginosa* at a multiplicity of infection (MOI) of 10 or with both *P. aeruginosa* (MOI, 10) and the BL21 control or BL21+MAM<sup>HS</sup> (MOI, 100). Following a 4-h infection, the attachment of *P. aeruginosa* and the resulting cytotoxicity on host cells were quantified. The presence of BL21+MAM<sup>HS</sup> led to a significant decrease in both the number of attached *P. aeruginosa* cells (3-fold reduction) and the resulting cytotoxicity (18-fold reduction) for host cells, while no significant changes were observed with *P. aeruginosa* in the presence of the BL21 control (Fig. 3). We further studied the intraspecific interactions between *E. coli* BL21 and *P.*

*aeruginosa*. Coincubation of both species in liquid broth had no effect on the numbers of either *P. aeruginosa* (Fig. 3C) or BL21 (Fig. 4) cells. Infection of epithelial cells with *P. aeruginosa* in the presence of MAM<sup>HS</sup> beads but not control beads equally led to a significant decrease in both the level of *P. aeruginosa* attachment to host cells (2-fold reduction) and cytotoxic effects on host cells (4-fold reduction) (Fig. 3G and H). These results were also confirmed by visual inspection of infected cells (Fig. 3D to F, I, and J).

**The inhibitory effect of BL21+MAM<sup>HS</sup> on *Enterococcus faecalis* is due to a combination of attachment competition and competition for nutrients.** A previous study by our group (14) showed that, due to overlap in the host receptors utilized by MAMs and many Gram-positive bacterial fibronectin-binding adhesins, MAMs also have the ability to displace Gram-positive bacterial pathogens from the host cell surface. We therefore

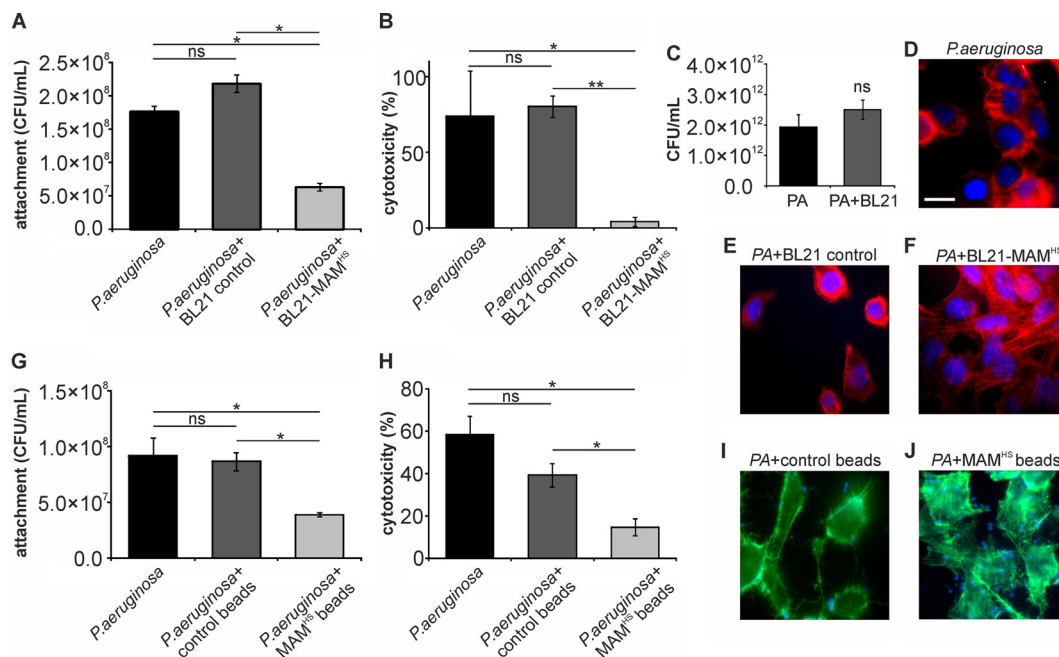
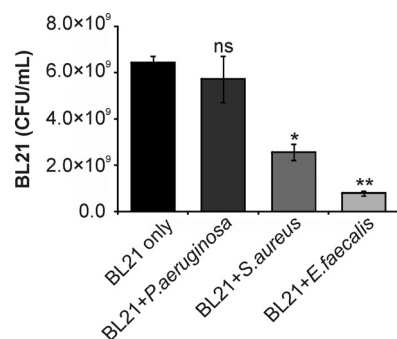


FIG 3 The inhibitory effect of BL21+MAM<sup>HS</sup> on *Pseudomonas aeruginosa* (PA) is based on competitive replacement from surface receptors. HeLa cells were infected with *P. aeruginosa* (MOI, 10) alone or in the presence of either the BL21 control or the BL21+MAM<sup>HS</sup> strain. Alternatively, HeLa cells were infected with *P. aeruginosa* (MOI, 10) alone or in the presence of either GST-coupled control beads or MAM<sup>HS</sup>-coupled beads. After 4 h, the numbers of attached *P. aeruginosa* cells were determined by selective plating (A, G) and cytotoxicity toward HeLa cells was determined by LDH release assays (B, H). Cytotoxicity was normalized against that for uninfected (0%) and Triton X-100-lysed (100%) samples. The morphology of infected HeLa cells following infections was determined by imaging. The staining in panels D to F shows DNA (blue) and F-actin (red). Bar, 20  $\mu$ m. The staining in panels I and J shows beads (blue) and F-actin (green). (C) Mixed planktonic cultures of *P. aeruginosa* and BL21 were grown for 4 h, and the number of *P. aeruginosa* cells was determined by selective plating. Results are means  $\pm$  SEMs ( $n = 3$ ), and significance was determined using Student's two-tailed *t* test on raw data. \*,  $P \leq 0.05$ ; \*\*,  $P \leq 0.01$ ; ns, no significant difference.

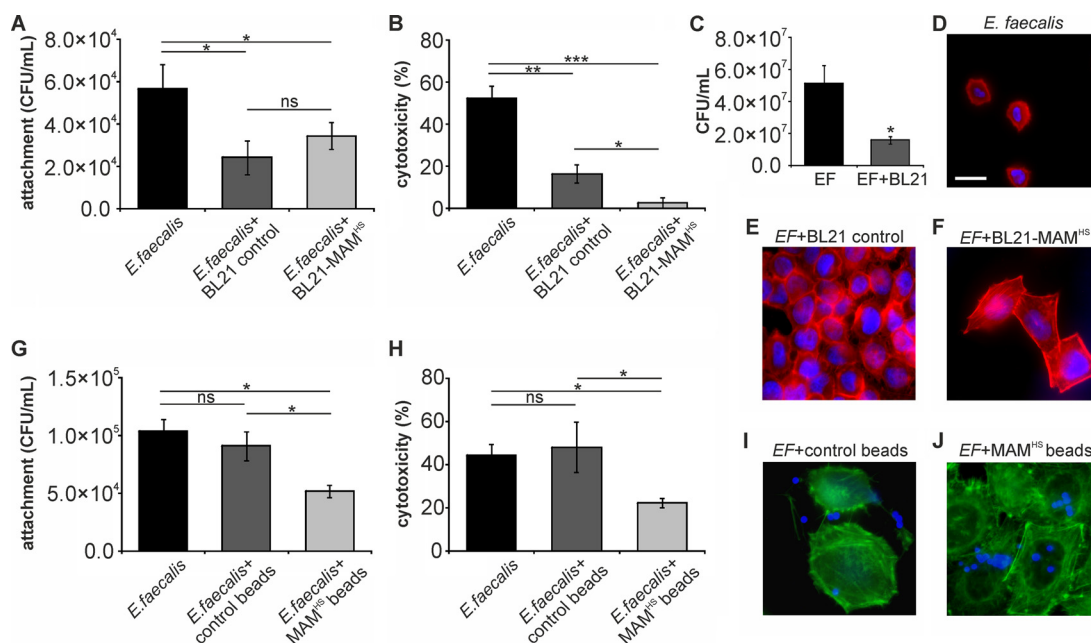


**FIG 4** Interactions between pathogens and *E. coli* BL21 during growth. *E. coli* BL21 was grown alone or as mixed cultures of *E. coli* BL21 and either *E. faecalis*, *P. aeruginosa*, or *S. aureus* for 4 h. The numbers of *E. coli* BL21 cells were determined by selective plating. Results are means  $\pm$  SEMs ( $n = 3$ ), and significance was determined using Student's two-tailed  $t$  test on raw data. \*,  $P \leq 0.05$  compared to the growth of BL21 alone; \*\*,  $P \leq 0.01$  compared to the growth of BL21 alone; ns, no significant difference compared to the growth of BL21 alone.

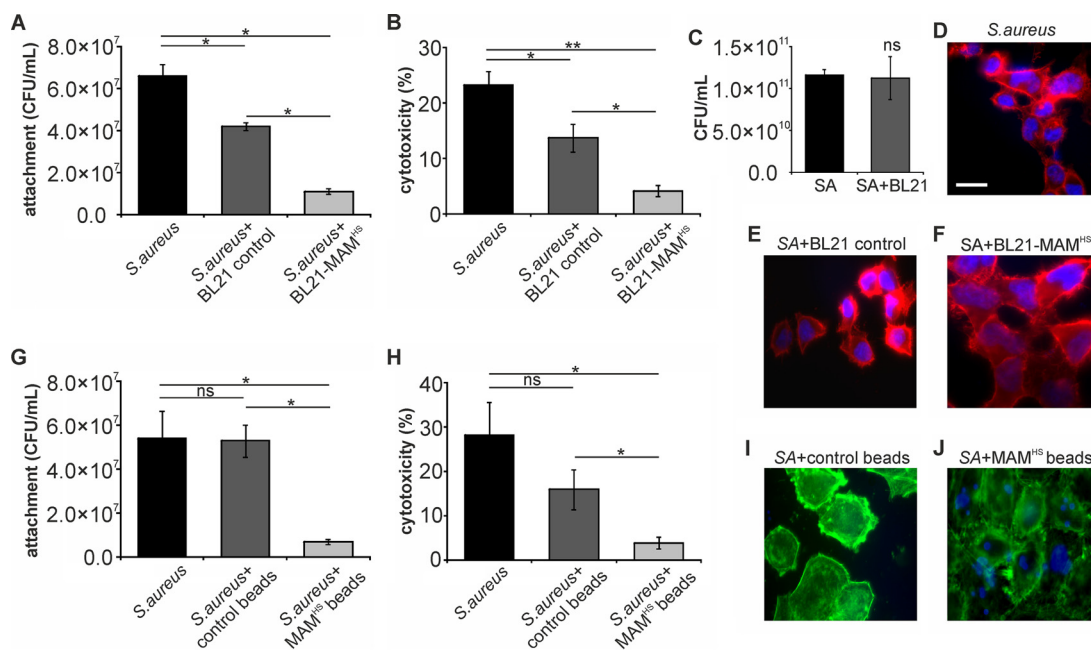
tested the effect of BL21 + MAM<sup>HS</sup> on infection with *E. faecalis*. Both BL21 + MAM<sup>HS</sup> and the BL21 control strain lacking MAM<sup>HS</sup> significantly decreased the number of host cell-bound *E. faecalis* cells (2-fold reduction; Fig. 5A). They both also decreased *E. faecalis*-mediated cytotoxicity toward host cells, but the effect of BL21 + MAM<sup>HS</sup> was greater (20-fold reduction) than that observed with the BL21 control strain (3-fold reduction) (Fig. 5B). Visualization of the infection further confirmed these results

(Fig. 5D to F). Quantification of both *E. coli* and *E. faecalis* following a 4-h coinoculation in liquid broth showed that both *E. coli* and *E. faecalis* were significantly inhibited by each other's presence (Fig. 4 and 5C). To distinguish these intraspecific bacterial interactions from inhibitory effects due to attachment competition, we investigated the effect of MAM<sup>HS</sup> beads on *E. faecalis* infection. While MAM<sup>HS</sup> beads decreased the attachment of *E. faecalis* cells to host cells (2-fold reduction) as well as cytotoxicity (2-fold reduction), control beads had no effect on either readout (Fig. 5G and H). Visualization of bead-based inhibition confirmed these results; attachment of MAM<sup>HS</sup> beads to host cells had a protective effect, and more epithelial cells than cells infected in the presence of control beads maintained an intact morphology (Fig. 5I and J).

**The inhibitory effect of BL21 + MAM<sup>HS</sup> on *Staphylococcus aureus* is due to a combination of attachment competition and interspecific antagonism.** *S. aureus* is a Gram-positive opportunistic pathogen which has previously been shown to be inhibited by the binding of bead-coupled *V. parahaemolyticus* MAM to host cells. A similar decrease of *S. aureus* adhesion to host cells (8-fold reduction) and cytotoxicity toward host cells (7-fold reduction) was observed here when we used bead-coupled MAM<sup>HS</sup> as the competing moiety. In contrast, incubation in the presence of control beads had no significant effect on either *S. aureus* attachment or cytotoxicity toward host cells (less than 2-fold reduction; Fig. 6G to J). Interestingly, when we used BL21 + MAM<sup>HS</sup> as the inhibitor against *S. aureus*, a significant effect on attachment and cytotoxicity was observed even with the control strain (Fig. 6A to F). Coincubation with BL21 lacking MAM<sup>HS</sup> led to a slight decrease



**FIG 5** The inhibitory effect of BL21 + MAM<sup>HS</sup> on *Enterococcus faecalis* (EF) is due to a combination of attachment competition and competition for nutrients. HeLa cells were infected with *E. faecalis* (MOI, 10) alone or in the presence of either the BL21 control or the BL21 + MAM<sup>HS</sup> strain. Alternatively, HeLa cells were infected with *E. faecalis* (MOI, 10) alone or in the presence of either GST control beads or MAM<sup>HS</sup>-coupled beads. After 4 h, the numbers of attached *E. faecalis* cells were determined by selective plating (A, G) and cytotoxicity toward HeLa cells was determined by LDH release assays (B, H). Cytotoxicity was normalized against that for uninfected (0%) and Triton X-100-lysed (100%) samples. The morphology of infected HeLa cells following infections was determined by imaging. The staining in panels D to F shows DNA (blue) and F-actin (red). Bar, 20  $\mu$ m. The staining in panels I and J shows the beads (blue) and F-actin (green). (C) Mixed planktonic cultures of *E. faecalis* and BL21 were grown for 4 h, and the number of *E. faecalis* cells was determined by selective plating. Results are means  $\pm$  SEMs ( $n = 3$ ), and significance was determined using Student's two-tailed  $t$  test on raw data. \*,  $P \leq 0.05$ ; \*\*,  $P \leq 0.01$ ; \*\*\*,  $P \leq 0.001$ ; ns, no significant difference.



**FIG 6** The inhibitory effect of BL21 + MAM<sup>HS</sup> on *Staphylococcus aureus* (SA) is due to a combination of attachment competition and interspecies antagonism. HeLa cells were infected with *S. aureus* (MOI, 10) alone or in the presence of either the BL21 control or the BL21 + MAM<sup>HS</sup> strain. Alternatively, HeLa cells were infected with *S. aureus* (MOI, 10) alone or in the presence of either GST-coupled control beads or MAM<sup>HS</sup>-coupled beads. After 4 h, the numbers of attached *S. aureus* cells were determined by selective plating (A, G) and cytotoxicity toward HeLa cells was determined by LDH release assays (B, H). Cytotoxicity was normalized against that for uninfected (0%) and Triton X-100-lysed (100%) samples. The morphology of infected HeLa cells following infections was determined by imaging. The staining in panels D to F shows DNA (blue) and F-actin (red). Bar, 20  $\mu$ m. The staining in panels I and J shows the beads (blue) and F-actin (green). (C) Mixed planktonic cultures of *S. aureus* and BL21 were grown for 4 h, and the number of *S. aureus* cells was determined by selective plating. Results are means  $\pm$  SEMs ( $n = 3$ ), and significance was determined using Student's two-tailed  $t$  test on raw data. \*,  $P \leq 0.05$ ; \*\*,  $P \leq 0.01$ ; ns, no significant difference.

in both attachment and cytotoxicity ( $\sim 2$ -fold). However, the inhibitory effect was more pronounced with BL21 + MAM<sup>HS</sup> (6-fold reduction of both adherence and cytotoxicity), and the effects achieved with the BL21 control and BL21 + MAM<sup>HS</sup> strains were significantly different both visually and on the basis of the results of quantitative assays (Fig. 6A, B, and D to F). When *S. aureus* and *E. coli* BL21 were grown together in the absence of host cells, *S. aureus* growth was unaffected (Fig. 6C), but the growth of BL21 was significantly diminished (Fig. 4). We performed follow-up experiments to identify the nature of the inhibition that *S. aureus* exerts on *E. coli*. Filtered supernatant isolated from *S. aureus* cultures was spotted on filter disks and caused a visible zone of inhibition on a lawn of *E. coli* after 16 h of incubation at 37°C (data not shown). Thus, *S. aureus* likely produces a secreted factor which inhibits the growth of *E. coli* BL21.

## DISCUSSION

The ability of bacteria to intimately adhere to host cells and tissues is a conserved feature in bacteria capable of a host-associated life style and essential for successful interactions between bacteria and the host. This makes adherence a potential target for antivirulence approaches, and we have previously shown that materials based on the *V. parahaemolyticus* protein MAM7 can efficiently displace a broad range of Gram-positive and Gram-negative bacterial pathogens of clinical importance. Due to the potential interference of the initially used adhesin, MAM7 from *V. parahaemolyticus*, with host cell function and its ability to enhance transcellular permeability in cultured intestinal epithelial cells, we shifted our

focus to an MAM protein from the well-characterized commensal HS strain of *E. coli*.

Commensal strains of *E. coli* can strongly adhere to epithelial cells without any ill effects, and this property has been shown to be mediated by a range of adhesins, including fimbriae and flagella (24, 25). These adhesive properties have previously been shown to be essential for commensal strains' ability to displace enteric pathogens, such as *Salmonella enterica* serovar Typhimurium and pathogenic *E. coli* (25–27). By heterologous surface expression of MAM from *E. coli* HS in the surrogate, nonadherent strain *E. coli* BL21, we created an engineered, adhesive strain for which adherence is solely based on MAM. We also created a semisynthetic material consisting of polystyrene beads with dimensions similar to those of *E. coli* chemically and directionally coupled to MAM from *E. coli* HS (MAM<sup>HS</sup>). This further allowed us to dissect any observed interactions between the materials and pathogens and attribute them to either adhesion or additional intraspecies interactions between *E. coli* and the pathogens used.

The results obtained with both BL21 + MAM<sup>HS</sup> and the bead-based inhibitor showed that MAM<sup>HS</sup> mediates specific and strong adherence to host cells. The binding affinity and avidity of MAM<sup>HS</sup> seem to be comparable to those of *V. parahaemolyticus* MAM7 and the MAM protein from enteropathogenic *E. coli* (EPEC), as it mediates the adherence of otherwise nonadherent BL21 to host cells to a similar extent as MAM7 and EPEC MAM (7).

The ability to displace pathogens from the host surface appears to be a conserved feature among MAMs, as BL21 + MAM<sup>HS</sup> was



able to decrease both the attachment and cytotoxicity of all three pathogens tested here. As is the case with *Vibrio* MAM7-based inhibitors (13, 14), MAM<sup>HS</sup> was able to displace both Gram-positive and Gram-negative bacterial pathogens. The biochemical basis of this behavior will require further investigation, as our initial characterization of MAM<sup>HS</sup> host receptor binding has demonstrated that it does not have the same ligand binding specificity as *Vibrio* MAM7, which utilizes phosphatidic acids as a main receptor (28). While the lack of MAM<sup>HS</sup> affinity toward phosphatidic acids means that the protein likely does not interfere with host cell signaling in the same way that *V. parahaemolyticus* MAM7 does, further work is needed to identify its host surface receptor.

Previous work comparing the inhibitory properties of live bacteria expressing MAM7 and bead-coupled MAM7 have largely yielded similar results with both materials. Both materials showed broad efficacy against *V. parahaemolyticus*, *V. cholerae*, *Yersinia pseudotuberculosis*, enteropathogenic *E. coli*, *Pseudomonas aeruginosa*, *Klebsiella pneumoniae*, and *Acinetobacter* spp. but had comparable activities against these bacteria, and no synergies were observed with the use of live bacteria over bead-based materials (7, 13). These results were recapitulated here with *P. aeruginosa*, in that both bead-based and live materials had comparable effects on this species, and no effects were observed with the BL21 control strain (12). In the present study, synergies due to intraspecific interactions were restricted to those against the Gram-positive bacterial isolates, and none of these were previously investigated with live adhesion inhibitors. However, the effects observed here with the bead-based adhesion inhibitor on *S. aureus* strain Newman were similar to the effects that we previously observed with MAM7 beads and *S. aureus* USA300 (14).

A comparison of the effects of the bacterium- and bead-based inhibitors on infection of host cells with *E. faecalis* showed a clear synergistic effect of the engineered bacteria. While the bead-based inhibitor halved the level of *E. faecalis*-mediated cytotoxicity, BL21 + MAM<sup>HS</sup> decreased the toxicity approximately 10-fold (Fig. 5). Further investigation showed that *E. faecalis* and *E. coli* limit each other's growth, most likely through competition for shared nutrients (Fig. 4 and 5C). While this implies a similar limitation of the growth of *E. coli* during the competition experiment, this growth limitation does not seem to affect its potential to outcompete *E. faecalis*, most likely due to the initial excess of *E. coli* over *E. faecalis* in the experiment.

In the case of *S. aureus*, the bacterium- and bead-based inhibitors had comparable overall effects on the outcome of infection (a 5-fold versus 4- to 5-fold reduction in *S. aureus*-mediated cytotoxicity, respectively). However, coinoculation with the BL21 control also led to a partial decrease in both adherence and cytotoxicity. The interaction between *S. aureus* and *E. coli* seems to be characterized by a one-sided inhibition of *E. coli* growth by *S. aureus*, whereas *E. coli* has no inhibitory effect on *S. aureus* growth (Fig. 4 and 6C). The basis of this one-sided inhibition could be production of a bacteriocin or other secreted inhibitory factors, such as bacteriolytic enzymes, by *S. aureus*, since the sterile supernatant of an *S. aureus* culture is sufficient to cause a zone of clearance on a lawn of *E. coli* BL21 cells. *S. aureus* is known to produce a wide range of antimicrobial factors, including several which show activity against Gram-negative bacteria (29, 30). While this production of antimicrobials by *S. aureus* may lead to a decrease in its capacity to adhere and cause cytotoxicity, this effect does not ultimately lead to synergy with MAM-mediated competitive dis-

placement, since the number of *S. aureus* cells does not decrease through the presence of BL21. The use of a bacteriocin-resistant strain of *E. coli* as a surrogate may be a way to maintain the number of *E. coli* cells during the competition and may thus encourage synergistic effects.

In summary, this study demonstrates that competitive replacement of pathogens is a shared feature of MAMs and that the use of engineered live, adhesive bacterial strains may have beneficial effects on the outcome of the competition, beyond the competitive binding of MAM to host cells. These synergies depend on the nature of the competing pathogen and may involve competition for nutrients or trade-offs between the production of antimicrobials and the production of colonization and virulence factors. These added layers of complexity are an important consideration not only in the future design of adhesion inhibitors but also in thinking about polymicrobial interactions in the context of a host in general.

## ACKNOWLEDGMENTS

We thank the members of the A. M. Krachler lab for helpful discussions and comments on earlier versions of the manuscript. We thank Joao Correia (University of Birmingham) for expert help and advice with imaging.

## FUNDING INFORMATION

This work, including the efforts of Daniel Henry Stones, Diana Pereira Vaz, and Anne Marie Krachler, was funded by BBSRC (BB/L007916/1 and BB/M021513/1). This work, including the efforts of Fitua Al-Saedi, was funded by Iraq Ministry of Higher Education and Scientific Research (Postgraduate Scholarship).

## REFERENCES

- Allen RC, Popat R, Diggle SP, Brown SP. 2014. Targeting virulence: can we make evolution-proof drugs? *Nat Rev Microbiol* 12:300–308. <http://dx.doi.org/10.1038/nrmicro3232>.
- Clatworthy AE, Pierson E, Hung DT. 2007. Targeting virulence: a new paradigm for antimicrobial therapy. *Nat Chem Biol* 3:541–548. <http://dx.doi.org/10.1038/nchembio.2007.24>.
- Krachler AM, Orth K. 2013. Targeting the bacteria-host interface: strategies in anti-adhesion therapy. *Virulence* 4:284–294. <http://dx.doi.org/10.4161/viru.24606>.
- Kisiela DI, Avagyan H, Friend D, Jalan A, Gupta S, Interlandi G, Liu Y, Tchesnokova V, Rodriguez VB, Sumida JP, Strong RK, Wu XR, Thomas WE, Sokurenko EV. 2015. Inhibition and reversal of microbial attachment by an antibody with parasteric activity against the FimH adhesin of uropathogenic *E. coli*. *PLoS Pathog* 11:e1004857. <http://dx.doi.org/10.1371/journal.ppat.1004857>.
- Greene SE, Pinkner JS, Chorell E, Dodson KW, Shaffer CL, Conover MS, Livny J, Hadjifrangiskou M, Almqvist F, Hultgren SJ. 2014. Pilicide ec240 disrupts virulence circuits in uropathogenic *Escherichia coli*. *mBio* 5:e02038. <http://dx.doi.org/10.1128/mBio.02038-14>.
- Chorell E, Pinkner JS, Bengtsson C, Banchelin TS, Edvinsson S, Linusson A, Hultgren SJ, Almqvist F. 2012. Mapping pilicide anti-virulence effect in *Escherichia coli*, a comprehensive structure-activity study. *Bioorg Med Chem* 20:3128–3142. <http://dx.doi.org/10.1016/j.bmc.2012.01.048>.
- Krachler AM, Ham H, Orth K. 2011. Outer membrane adhesion factor multivalent adhesion molecule 7 initiates host cell binding during infection by gram-negative pathogens. *Proc Natl Acad Sci U S A* 108:11614–11619. <http://dx.doi.org/10.1073/pnas.1102360108>.
- Zhang L, Zhang C, Ojcius DM, Sun D, Zhao J, Lin X, Li L, Yan J. 2012. The mammalian cell entry (Mce) protein of pathogenic *Leptospira* species is responsible for RGD motif-dependent infection of cells and animals. *Mol Microbiol* 83:1006–1023. <http://dx.doi.org/10.1111/j.1365-2958.2012.07985.x>.
- El-Shazly S, Ahmad S, Mustafa AS, Al-Attiah R, Krajci D. 2007. Internalization by HeLa cells of latex beads coated with mammalian cell entry (Mce) proteins encoded by the mce3 operon of *Mycobacterium*



- tuberculosis. *J Med Microbiol* 56:1145–1151. <http://dx.doi.org/10.1099/jmm.0.47095-0>.
10. Arruda S, Bomfim G, Knights R, Huima-Byron T, Riley LW. 1993. Cloning of an *M. tuberculosis* DNA fragment associated with entry and survival inside cells. *Science* 261:1454–1457. <http://dx.doi.org/10.1126/science.8367727>.
  11. Rodriguez DC, Ocampo M, Varela Y, Curtidor H, Patarroyo MA, Patarroyo ME. 2015. Mce4F Mycobacterium tuberculosis protein peptides can inhibit invasion of human cell lines. *Pathog Dis* 73:ftu020. <http://dx.doi.org/10.1093/femspd/ftu020>.
  12. Krachler AM, Ham H, Orth K. 2012. Turnabout is fair play: use of the bacterial multivalent adhesion molecule 7 as an antimicrobial agent. *Virulence* 3:68–71. <http://dx.doi.org/10.4161/viru.3.1.18172>.
  13. Krachler AM, Mende K, Murray C, Orth K. 2012. In vitro characterization of multivalent adhesion molecule 7-based inhibition of multidrug-resistant bacteria isolated from wounded military personnel. *Virulence* 3:389–399. <http://dx.doi.org/10.4161/viru.20816>.
  14. Hawley CA, Watson CA, Orth K, Krachler AM. 2013. A MAM7 peptide-based inhibitor of *Staphylococcus aureus* adhesion does not interfere with in vitro host cell function. *PLoS One* 8:e81216. <http://dx.doi.org/10.1371/journal.pone.0081216>.
  15. Mahmoud RY, Stones DH, Li W, Emara M, Eldomany RA, Wang D, Wang Y, Krachler AM, Yu J. 2016. The multivalent adhesion molecule SSO1327 plays a key role in *Shigella sonnei* pathogenesis. *Mol Microbiol* 99:658–673. <http://dx.doi.org/10.1111/mmi.13255>.
  16. Lim J, Stones DH, Hawley CA, Watson CA, Krachler AM. 2014. Multivalent adhesion molecule 7 clusters act as signaling platform for host cellular GTPase activation and facilitate epithelial barrier dysfunction. *PLoS Pathog* 10:e1004421. <http://dx.doi.org/10.1371/journal.ppat.1004421>.
  17. Stones DH, Krachler AM. 2015. Dual function of a bacterial protein as an adhesin and extracellular effector of host GTPase signaling. *Small GTPases* 6:153–156. <http://dx.doi.org/10.1080/21541248.2015.1028609>.
  18. Stones DH, Al-Saedi F, Vaz D, Perez-Soto N, Krachler AM. 16 November 2015. Biomimetic materials to characterize bacteria-host interactions. *J Vis Exp*. <http://dx.doi.org/10.3791/53400>.
  19. Fisher K, Phillips C. 2009. The ecology, epidemiology and virulence of *Enterococcus*. *Microbiology* 155:1749–1757. <http://dx.doi.org/10.1099/mic.0.026385-0>.
  20. Azzopardi EA, Azzopardi E, Camilleri L, Villapalos J, Boyce DE, Dziewulski P, Dickson WA, Whitaker IS. 2014. Gram negative wound infection in hospitalised adult burn patients—systematic review and metanalysis. *PLoS One* 9:e95042. <http://dx.doi.org/10.1371/journal.pone.0095042>.
  21. Fry DE. 2013. The continued challenge of *Staphylococcus aureus* in the surgical patient. *Am Surg* 79:1–10.
  22. Church D, Elsayed S, Reid O, Winston B, Lindsay R. 2006. Burn wound infections. *Clin Microbiol Rev* 19:403–434. <http://dx.doi.org/10.1128/CMR.19.2.403-434.2006>.
  23. Wurtz R, Karajovic M, Dacumos E, Jovanovic B, Hanumadass M. 1995. Nosocomial infections in a burn intensive care unit. *Burns* 21:181–184. [http://dx.doi.org/10.1016/0305-4179\(95\)80005-9](http://dx.doi.org/10.1016/0305-4179(95)80005-9).
  24. Lasaro MA, Salinger N, Zhang J, Wang Y, Zhong Z, Goulian M, Zhu J. 2009. F1C fimbriae play an important role in biofilm formation and intestinal colonization by the *Escherichia coli* commensal strain Nissle 1917. *Appl Environ Microbiol* 75:246–251. <http://dx.doi.org/10.1128/AEM.01144-08>.
  25. Kleta S, Nordhoff M, Tedin K, Wieler LH, Kolenda R, Oswald S, Oelschlaeger TA, Bleiss W, Schierack P. 2014. Role of F1C fimbriae, flagella, and secreted bacterial components in the inhibitory effect of probiotic *Escherichia coli* Nissle 1917 on atypical enteropathogenic *E. coli* infection. *Infect Immun* 82:1801–1812. <http://dx.doi.org/10.1128/IAI.01431-13>.
  26. Schierack P, Kleta S, Tedin K, Babila JT, Oswald S, Oelschlaeger TA, Hiemann R, Paetzold S, Wieler LH. 2011. *E. coli* Nissle 1917 affects *Salmonella* adhesion to porcine intestinal epithelial cells. *PLoS One* 6:e14712. <http://dx.doi.org/10.1371/journal.pone.0014712>.
  27. Boudeau J, Glasser AL, Julien S, Colombel JF, Darfeuille-Michaud A. 2003. Inhibitory effect of probiotic *Escherichia coli* strain Nissle 1917 on adhesion to and invasion of intestinal epithelial cells by adherent-invasive *E. coli* strains isolated from patients with Crohn's disease. *Aliment Pharmacol Ther* 18:45–56. <http://dx.doi.org/10.1046/j.1365-2036.2003.01638.x>.
  28. Krachler AM, Orth K. 2011. Functional characterization of the interaction between bacterial adhesin multivalent adhesion molecule 7 (MAM7) protein and its host cell ligands. *J Biol Chem* 286:38939–38947. <http://dx.doi.org/10.1074/jbc.M111.291377>.
  29. Jack RW, Tagg JR, Ray B. 1995. Bacteriocins of gram-positive bacteria. *Microbiol Rev* 59:171–200.
  30. Iqbal A, Ahmed S, Ali SA, Rasool SA. 1999. Isolation and partial characterization of Bac201: a plasmid-associated bacteriocin-like inhibitory substance from *Staphylococcus aureus* AB201. *J Basic Microbiol* 39:325–336. [http://dx.doi.org/10.1002/\(SICI\)1521-4028\(199912\)39:5/6<325::AID-JOBM325>3.0.CO;2-S](http://dx.doi.org/10.1002/(SICI)1521-4028(199912)39:5/6<325::AID-JOBM325>3.0.CO;2-S).