

Ocean Edge: Photographic collection

Trudie Ballantyne

Ocean Edge: Photographic collection.

Three Exhibitions: Two in China and one in the UK.

A collection of photographic images created in response to Ocean Plastic. Ballantyne collected plastic objects and fragments from the coast of the UK, including items such as straws, lighters, toys and tampon applicators. With these objects Ballantyne created large format still life photographic images, using a high end digital camera, outputting 300mb files, which are able to be printed larger than life-size at 2 meters in height. Ballantyne's aim is to create impact with the audience and prompt the viewer to consider, question and modify their own everyday consumption and subsequent use and recycling of plastic items. These have been shown and shared for educational purposes with Chinese students and exhibitions both in China and the UK.

Ocean Edge Educational
Exhibitions, Moganshan, China
May & June 2017

1: Ocean Edge Educational Exhibitions Moganshan China 2017

A selection of thirteen images were selected, five were printed on translucent material at 2meters high and eight printed at 20 x16 inches and framed.

Schools visited and carried out educational workshops using the images both hung in the venues and used in powerpoint presentations in classes, discussing plastic waste, the fact plastic never breaks down and the children responded to the work creating their own art work and motifs to raise public awareness and promote change at an individual and community level.

Prodigy Outdoor Base, (the large toys pic); No73 (straws pic and slightly pink outside walls); Bamboo View Guesthouse (fragments, fishing line, lighters). They are the oldest 3 guesthouses in this part of the village (launched 2009-2011) which is now full of guesthouses. (All guesthouse addresses in Xiwuli (West Hamlet), Houwu Village, Fatou Township, Deqing County, Zhejiang Province China)

The local school visit was 20 x 12 yr old students, accompanying teachers and parents.

Another school visit - Dulwich International School 80 x students and teachers had activities at Bamboo View, and BBQ at No73

Total views approx 100 school children plus teachers and parents

Plus all these guesthouses had paying adult guests every weekend. approx 200 total

2 meter high translucent prints rolled
prior to installation.

Bamboo View Guesthouse
Xiwuli (West Hamlet), Houwu Village,
Fatou Township, Deqing County,
Zhejiang Province, China



'Lighters' Trudie Ballantyne
2 meter high translucent print.

Bamboo View Guesthouse
Xiwuli (West Hamlet), Houwu
Village, Fatou Township, Deqing
County, Zhejiang Province,
China



'Fishing line' Trudie Ballantyne
2 meter high translucent print.

Bamboo View Guesthouse
Xiwuli (West Hamlet), Houwu Village,
Fatou Township, Deqing County,
Zhejiang Province, China



'Straws' Trudie Ballantyne
2 meter high translucent print.

No.73 Xiwuli (West Hamlet), Houwu Village,
Fatou Township, Deqing County, Zhejiang
Province, China



'Toys' Trudie Ballantyne
2 meter high translucent
print. Plus four 20x16"
framed prints.

Prodigy Outdoor Base
Xiwuli (West Hamlet),
Houwu Village, Fatou
Township, Deqing County,
Zhejiang Province, China



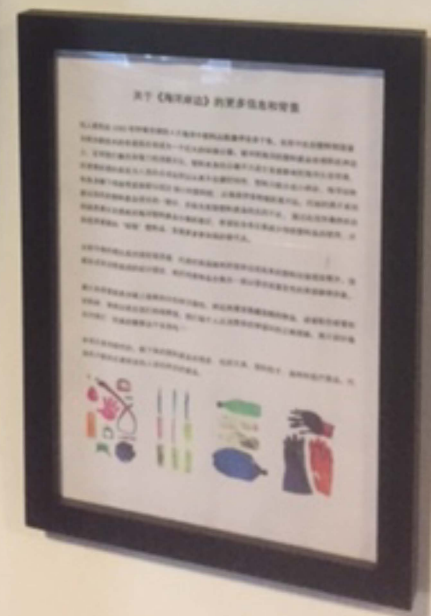
'Knots and Toys' Trudie
Ballantyne
20x16" framed prints.

Prodigy Outdoor Base
Xiwuli (West Hamlet),
Houwu Village, Fatou
Township, Deqing
County, Zhejiang
Province, China



Prodigy Outdoor Base

Xiwuli (West Hamlet), Houwu Village, Fatou Township, Deqing County, Zhejiang Province, China



‘Plastic bottles’ Trudie
Ballantyne
20x16” framed prints.

Prodigy Outdoor Base
Xiwuli (West Hamlet),
Houwu Village, Fatou
Township, Deqing County,
Zhejiang Province, China



‘Shoes’, ‘Balls’ and ‘Plastic bottles’ Trudie Ballantyne
20x16” framed prints.

Prodigy Outdoor Base
Xiwuli (West Hamlet),
Houwu Village, Fatou
Township, Deqing County,
Zhejiang Province, China



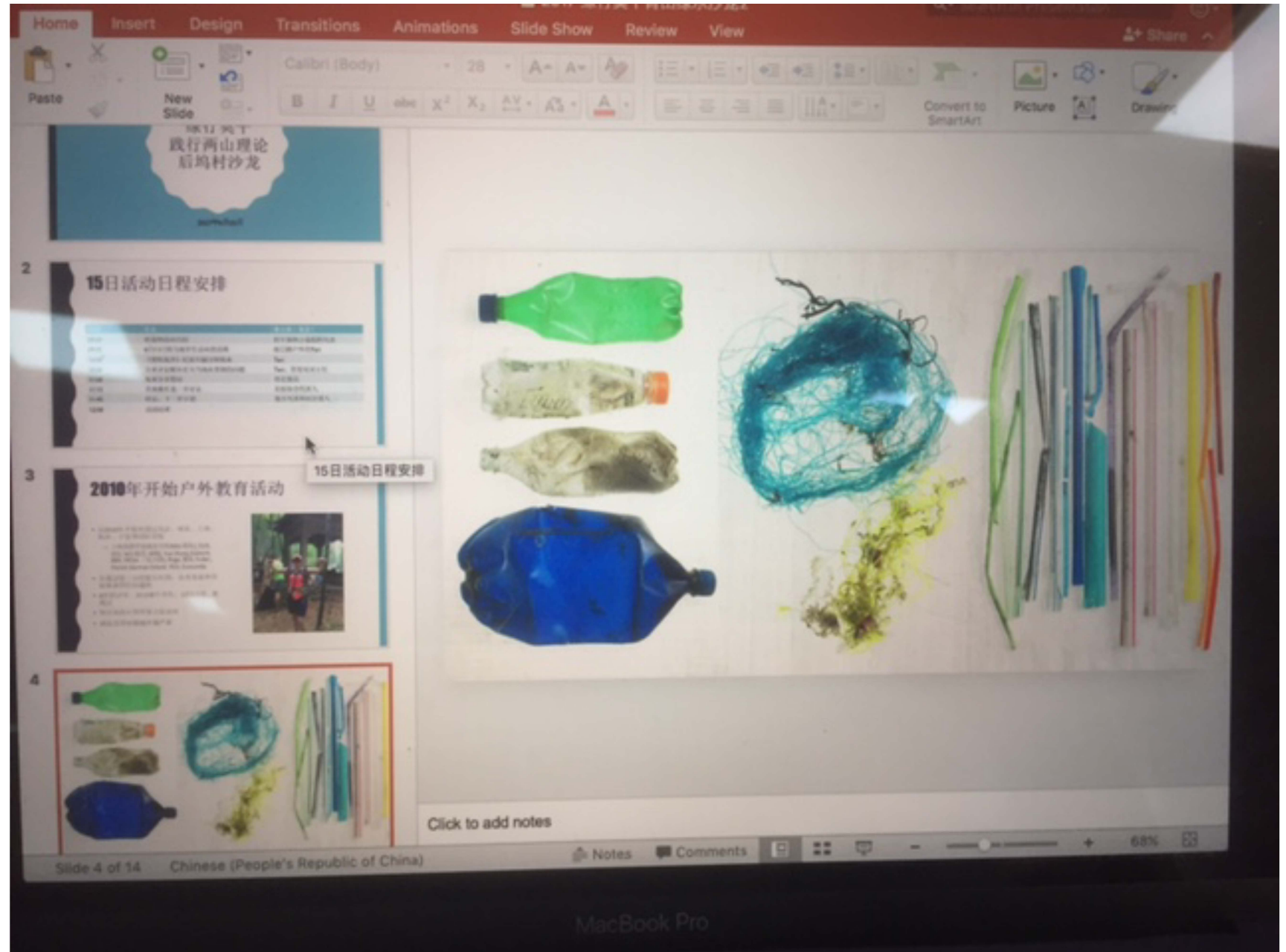
School visit plastic awareness activity.

Prodigy Outdoor Base
Xiwuli (West Hamlet), Houwu Village,
Fatou Township, Deqing County,
Zhejiang Province, China



School visit plastic awareness activity, images used in lead presentation.

Bamboo View Guesthouse
Xiwuli (West Hamlet),
Houwu Village, Fatou
Township, Deqing County,
Zhejiang Province, China



School visit plastic
awareness activity.

Bamboo View
Guesthouse
Xiwuli (West Hamlet),
Houwu Village, Fatou
Township, Deqing
County, Zhejiang
Province, China



The edge of 'Fragments'
Trudie Ballantyne .
2 meter high translucent
print can be seen behind
on the left of this image.

School visit plastic
awareness activity.

Bamboo View Guesthouse
Xiwuli (West Hamlet),
Houwu Village, Fatou
Township, Deqing County,
Zhejiang Province, China



Ocean Edge Exhibition - Education First Office Shanghai
Oct 2017 – March 2018

2: Ocean Edge Exhibition - Education First Office Shanghai

The exhibition was hung in the large activity/ rest room basement of Education First offices.

Education First are a global company 'provides life-changing education for global citizens. For over 50 years, our mission has been to give confidence and freedom to people of all ages, nationalities and backgrounds. We transform dreams into international opportunities. We combine language training with cultural exchange, academic achievement and educational travel to deliver courses and programs that transform dreams into international opportunities.' (EF website <https://www.ef.co.uk/about-us/our-company/>)

The Shanghai office has 946 employees, most of whom would have seen the collection of thirteen images, other campus employees and visitors meeting at the headquarters for events, would have seen the collection, a total estimated number views, over 2,000 people. Ocean's Edge: Photographic collection remained on show at Education First's main Shanghai headquarters for 6 months. Education First 'loved the exhibition', it prompted plastic reduction and recycling activities within the organisation.

‘Lighters’ and ‘Fishing Line’. Trudie Ballantyne
2 meter high
translucent prints.

Education First
Headquarters,
Shanghai, China
meeting area.



'Straws', 'Fragments' and 'Toys' Trudie Ballantyne
2 meter high translucent prints.

Education First Headquarters,
Shanghai, China meeting and
canteen area, free coffee cup
van is where people pick up
their cups for drinks.



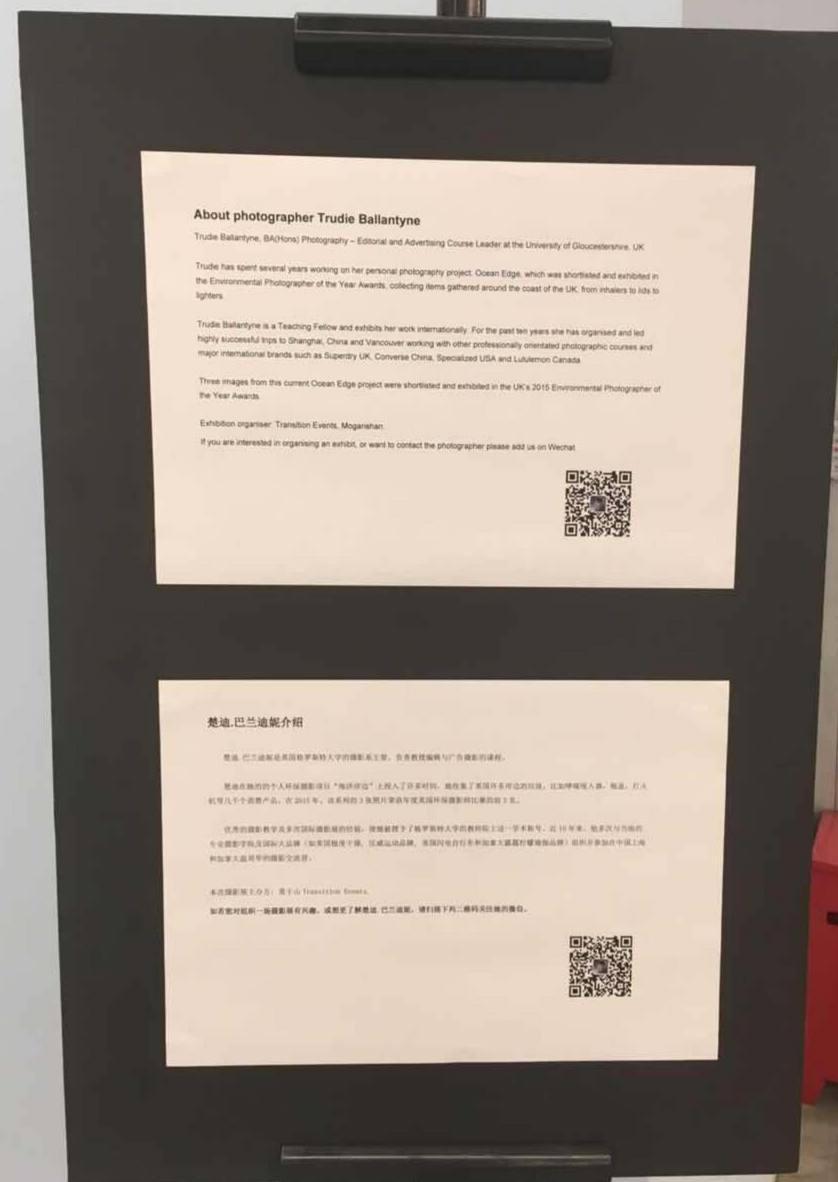
Straws',
'Fragments' and
'Toys' Trudie
Ballantyne
2 meter high
translucent
prints.

Education First
Headquarters,
Shanghai, China
meeting and
canteen area,
free coffee cup
van is where
people pick up
their cups for
drinks.



Information plates.

Education First Headquarters, Shanghai,
China meeting and canteen area.



Environmental Photographer of the Year Award exhibition
Royal Geographic Society London.
Finalist 22nd June – 10th July 2015

3: Environmental Photographer of the Year Award
exhibition Royal Geographic Society London.

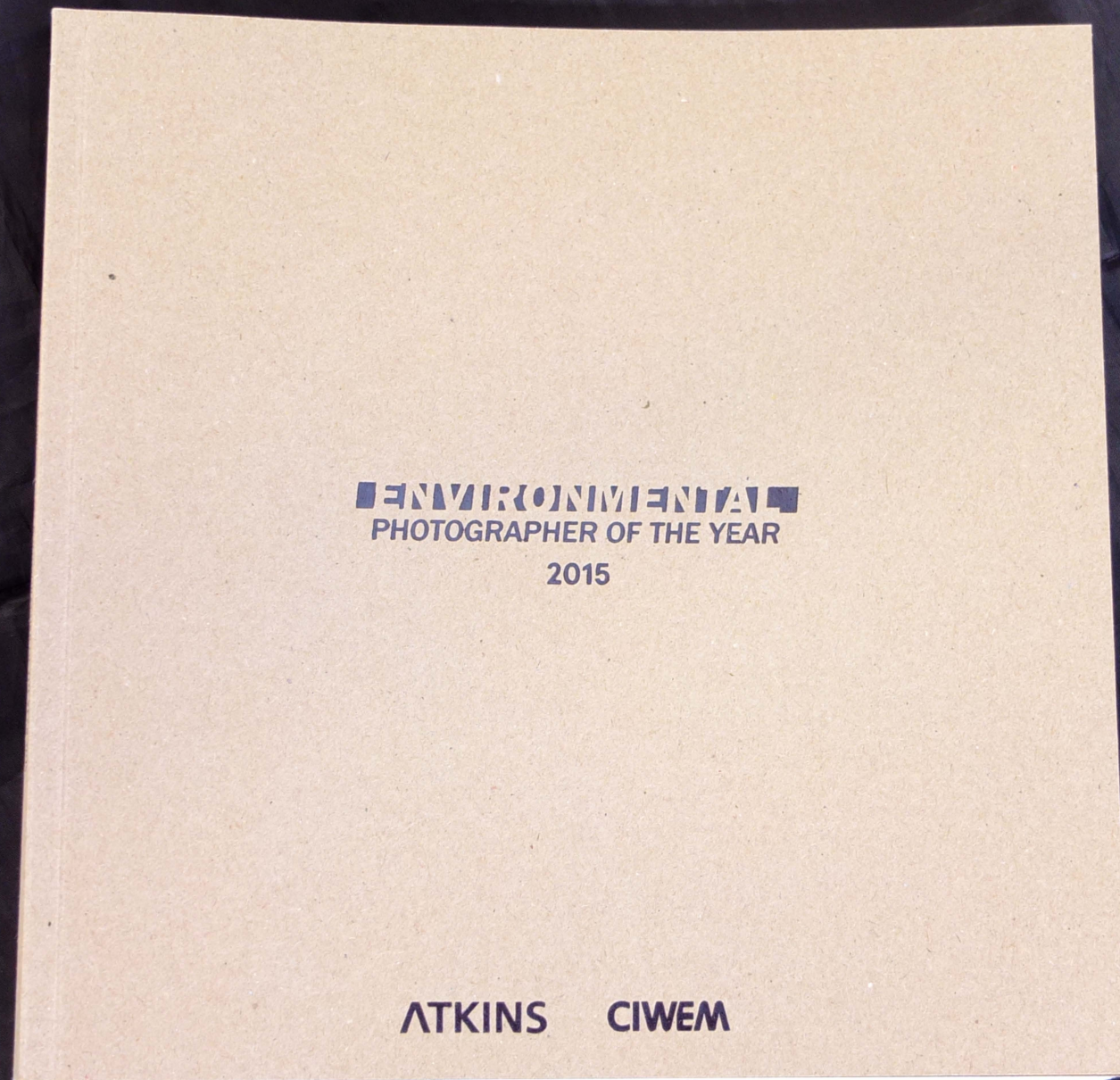
An annual Photographic competition receiving over
10,000 entries.

Ballantyne was a Finalist and exhibitor of 3 images.

The Royal Geographic Society gallery has Free entry
and the exhibition was open for 3 weeks approx 5000
people visited the exhibition during this time
[https://www.ciwem.org/awards/environmental-
photographer-of-the-year](https://www.ciwem.org/awards/environmental-photographer-of-the-year)

Environmental
Photographer
of the Year.

Catalogue 2015
Front cover.



Environmental Photographer of the Year.

Left hand page
'Straws' Trudie
Ballantyne
Catalogue
2015

SAVE THE ARCTIC CHRISTIAN ASLUND 2014 / NORWAY

Greenpeace campaigners representing Heads of States, standing on an ice flow in the Arctic Ocean northwest of Svalbard, with a message to the global leaders to save the Arctic and take urgent action at the climate summit in New York for a transition to 100% renewable energy.



STRAWS TRUDIE BALLANTYNE 2015 / HEREFORDSHIRE, UK

This image is part of an ongoing project Ocean Edge that explores and exposes plastic waste that is discarded into the oceans and ultimately deposited on our shores.

This plastic detritus is a direct result of human consumption. Greater awareness is needed to encourage recycling, the use of social plastic and ultimately develop and use environmentally friendly replacements for plastic.



EGYPTIAN DUGONG JOHN BANTIN 2008 / EGYPT

The Dugong lives in parts of the Red Sea, Persian Gulf and the Indian and Pacific Oceans. In the 1980s the Red Sea Dugong population was estimated at about 4000. However, the numbers are gradually decreasing partly due to the development of the Egyptian coastline.



Environmental
Photographer of the Year.

Left hand page
'Straws' Trudie
Ballantyne
Catalogue 2015

presenting Heads
flow in the Arctic
I, with a message
the Arctic and take
summit in New York
viable energy.



STRAWS

TRUDIE BALLANTYNE
2015 / HEREFORDSHIRE, UK

This image is part of an ongoing project Ocean Edge that explores and exposes plastic waste that is discarded into the oceans and ultimately deposited on our shores.

This plastic detritus is a direct result of human consumption. Greater awareness is needed to encourage recycling, the use of social plastic and ultimately develop and use environmentally friendly replacements for plastic.



EGYPTIAN DUGONG

JOHN BANTIN
2008 / EGYPT

The Dugong lives in parts of the Red Sea, Persian Gulf and the Indian and Pacific Oceans. In the 1980s the Red Sea Dugong population was estimated at about 4000. However, the numbers are gradually decreasing partly due to the development of the Egyptian coastline.



Environmental
Photographer of
the Year. 2015.

Royal Geographic
Society London

'Lighters', 'Straws'
and 'Tampon
Applicators'
Image of framed
works in situ



STRAWS
TRUDIE BALLANTYNE
2015 / HEREFORDSHIRE, UK

This image is part of an ongoing project Ocean
Edge that explores and exposes plastic waste that is
discarded into the oceans and ultimately deposited
on our shores.

This plastic detritus is a direct result of human
consumption. Greater awareness is needed to
encourage recycling, the use of social plastic and
ultimately develop and use environmentally friendly
replacements for plastic.

CAMERA: MAMIYA RZ + PHASE ONE HD10
ISO: 100
SHUTTER SPEED: 1/30
APERTURE: F/32
FOCAL LENGTH: 160MM MACRO

Environmental
Photographer
of the Year.
2015.

Royal
Geographic
Society
London

