



UNIVERSITY OF
GLOUCESTERSHIRE

This is a peer-reviewed, post-print (final draft post-refereeing) version of the following published document:

Baker, Colin ORCID: 0000-0001-8971-2829, Loughren, Elizabeth A, Crone, Diane ORCID: 0000-0002-8798-2929 and Kallfa, Nevilla (2015) Perceptions of health professionals involved in the implementation of a NHS Health Check care pathway in the primary care setting. Practice Nursing, 26 (12). pp. 608-612.

Official URL: <http://www.practicenursing.com/>

EPrint URI: <https://eprints.glos.ac.uk/id/eprint/2935>

Disclaimer

The University of Gloucestershire has obtained warranties from all depositors as to their title in the material deposited and as to their right to deposit such material.

The University of Gloucestershire makes no representation or warranties of commercial utility, title, or fitness for a particular purpose or any other warranty, express or implied in respect of any material deposited.

The University of Gloucestershire makes no representation that the use of the materials will not infringe any patent, copyright, trademark or other property or proprietary rights.

The University of Gloucestershire accepts no liability for any infringement of intellectual property rights in any material deposited but will remove such material from public view pending investigation in the event of an allegation of any such infringement.

PLEASE SCROLL DOWN FOR TEXT.

This is a peer-reviewed, post-print (final draft post-refereeing) version of the following published document:

Baker, Colin and Loughren, Elizabeth A and Crone, Diane and Kallfa, Nevilla (2015). *Perceptions of health professionals involved in the implementation of a NHS Health Check care pathway in the primary care setting*. Practice Nursing, 26 (12), 608-612. ISSN 0964-9271

Published in Practice Nursing, and available online at:

<http://www.practicenursing.com/>

We recommend you cite the published (post-print) version.

The URL for the published version is <http://www.practicenursing.com/>

Disclaimer

The University of Gloucestershire has obtained warranties from all depositors as to their title in the material deposited and as to their right to deposit such material.

The University of Gloucestershire makes no representation or warranties of commercial utility, title, or fitness for a particular purpose or any other warranty, express or implied in respect of any material deposited.

The University of Gloucestershire makes no representation that the use of the materials will not infringe any patent, copyright, trademark or other property or proprietary rights.

The University of Gloucestershire accepts no liability for any infringement of intellectual property rights in any material deposited but will remove such material from public view pending investigation in the event of an allegation of any such infringement.

PLEASE SCROLL DOWN FOR TEXT

Perceptions of health professionals involved in the implementation of a NHS Health Check care pathway in the primary care setting.

Baker, C. Research Fellow, University of Gloucestershire, Oxstalls Campus, Oxstalls Lane, Gloucester, Gloucestershire, UK, GL2 9HW, cmbaker@glos.ac.uk, 01242 715198.
[corresponding author]

Loughren, E.A. Research Fellow, University of Gloucestershire, Oxstalls Campus, Oxstalls Lane, Gloucester, Gloucestershire, UK, GL2 9HW, eloughren@glos.ac.uk, 01242 715197.

Crone, D. Professor of Exercise Science, University of Gloucestershire, Oxstalls Campus, Oxstalls Lane, Gloucester, Gloucestershire, UK, GL2 9HW, dcrone@glos.ac.uk, 01242 715161.

Kallfa, N. Consultant in Public Health, Public Health England (former Consultant in Public Health at Gloucestershire County Council), Public Health England, 1st Floor, 2 Rivergate, Temple Quay, Bristol, BS1 6EH, nevila.kallfa@phe.gov.uk, 0300 3038162.

Abstract

Background:

The national NHS Health Check programme in England aims to help people stay well for longer and is designed to support individuals aged between 40 and 74 to manage their

risk of developing vascular diseases by offering a cardiovascular risk assessment every five years.

Aim:

To investigate health professionals' experiences and perspectives concerning the implementation of a local HC programme and challenges to delivery.

Methods:

Surveys including standardised quantitative questions and qualitative questions were administered to GP practice staff (n = 25) directly involved in the implementation of Health Checks within a single county in the South West of England.

Results:

There was a lack of clarity concerning the expectations for Health Checks and barriers to consistently implementing the pathway. Practitioners were not always confident in communicating risk or supporting change in patient health behaviours.

Conclusions:

There is a need for on-going training and support in respect of Health Checks for those engaged in its implementation.

Introduction

The National Health Service (NHS) in England launched the NHS Health Check (HC) programme in April 2009 with the aim to support individuals aged between 40 and 74 to manage their risk of developing vascular diseases by identifying cardiovascular disease (CVD) (Department of Health, 2009). A key objective of the programme is to identify people aged between 40 and 74 years old at risk of, or living with undiagnosed CVD (diabetes, stroke, chronic kidney disease). Health Checks are designed to triage patients according to their CVD risk in order to establish appropriate treatment pathways if required. Challenges to patient uptake of HCs and similar primary care screening and prevention programmes include variations in assessment and treatment follow up, links to wider lifestyle services, and staff training (Graley *et al.*, 2011; Hipwell *et al.*, 2014; Nicholas *et al.*, 2012). These have underlined the importance of staff training for example, in taking anthropometric measurements (i.e. quantitative measurements to assess the size, shape and composition of patients), and providing lifestyle advice (McNaughton *et al.*, 2011). While evidence is emerging concerning patient perceptions of HCs (Baker *et al.*, 2015; Burgess *et al.*, 2014; Ellis *et al.*, 2015; Ismail & Atkin, 2015; Jenkinson *et al.*, 2015), there is a lack of evidence concerning health professionals' experiences and perspectives of the programme. The aim of this study was to investigate health professionals' experiences and perspectives concerning the implementation of a local HC programme and challenges to delivery.

NHS Gloucestershire Health Checks

The Gloucestershire HCs programme commenced in 2010 and is overseen by Public Health NHS Gloucestershire. A Gloucestershire HC care pathway (Figure 1) was agreed with local GP CVD leads in which all participating practices (n= 83) nominated a lead GP and lead Practice Nurse. The role of the Lead was to undergo HC training in order to provide consistency in terms of knowledge and procedures across the practice cohort. The pathway was underpinned by the Primary and Community Care Audit Group (PCCAG) administration template and was designed to triage patients according to their CVD risk via a staged invitation process. Gloucestershire HCs included a comprehensive support service for practice staff which included: MIQUEST queries (a system that facilitates the extraction of data from different types of general practice systems); sample invite templates; protocol for CVD risk assessment, and patient information cards. All Gloucestershire HCs were delivered within GP practices during the period covered by this study. A first stage risk assessment appointment including blood pressure, body mass index and smoking status is used to calculate patients' CVD risk score using QRISK, the risk of having a heart attack or stroke over the next 10 years (ClinRisk, 2014). High risk patients (CVD risk score $\geq 20\%$) are invited for a second appointment to confirm whether a CVD diagnosis was required and to be placed onto the risk register for appropriate management including drug therapy and signposting to lifestyle services. Discretionary follow up appointments are offered to lower risk patients ($\leq 19\%$ risk).

[Figure 1 here]

Methods

Participants and data collection

Participants (n = 25) were General Practice staff directly involved in the programme implementation either through conducting assessments with patients or managing staff. Participants were identified randomly via the County Medical List to ensure geographic spread. Adopting a mixed methods approach, a standardised survey (Figure 2) was devised in consultation with the HC Commissioner based on the HC care pathway and a review of the literature. This included four main themes. The first theme assessed method of patient identification and invitation. Three further included assessment and referral protocols, implementation and impact of HCs, and areas for improvement. The survey was administered via telephone by a single researcher which provided an opportunity to elicit qualitative data for example, what worked well, in addition to responses to the quantitative questions. Quantitative questions included dichotomous (two possible responses), and Likert-type questions (responses ranging between 1 to 5, 5 indicating more agreement). Data collection was supported with an online survey tool to aid data capture, retrieval and analysis.

[Figure 2 here]

Data analyses

Descriptive analyses were run on quantitative data to compute mean item scores. Qualitative data were recorded and transcribed verbatim in order to ensure accuracy. The qualitative software package NVIVO 9 was used to manage and organise the qualitative data and facilitate deductive thematic analysis (Gale *et al.*, 2013). This involved systematically coding sections of text into broad descriptive themes followed by deeper

analysis to identify sub themes that helped unpack participant data. The creation of a coded matrix facilitated the renaming of participants as soon as they were included in the research and facilitated the inclusion in the text of participants' quotations via a code according to their role, sequence in the interview process, and their location according for example, PM_5/1 (Practice Manager, the 5th interviewed, District 1).

Ethical approval

Ethical compliance was approved by the University of Gloucestershire research ethics committee.

Results

Participant profile

In total, 42 GP surgeries were contacted from which 25 participants were interviewed between May and July, 2012, representing 30.1% of the total number of surgeries implementing HCs. Respondents from GP surgeries included GPs (GP, n = 2), Practice Managers (PM, n = 14), Practice Nurses (PN, n = 6) Health Care Assistants (HCA, n = 2) and an administrator. Results are presented in a combined narrative according to the themes outlined in the analytic framework and sub themes that emerged through data analysis.

Theme 1: Method of patient identification and invitation by practices

The first sub theme, flexibility, highlighted that practices were able to employ a range of approaches for inviting patients; *'we're working in descending order'* [PM_7/3], and; *'we work on an alphabetical approach based on the search results'* [HCA_1/1]. Opportunistic approaches were encouraged by commissioners and were undertaken by 70 per cent of practice respondents; *'we identify patients when attending for other appointments'* [PM_4/1], and; *'we review new patient checks, chronic disease management patients and INPS clinical system'* [PM_13/2]. One participant highlighted that they had merged existing practice processes with the HC care pathway; *'there was a similar in-house system established before NHS HC which meant a number of patients had already been scored. Following this we now select invitees based on their [CVD] risk score'* [GP_2/3].

The second sub theme, implementation inconsistency, related to potential management issues and limited understanding of the pathway. This meant it was not always possible to identify patients due to a lack of information collected by the practice prior to the appointment; *'a lot of patients do not fill out the [pre-HC appointment] questionnaires properly in order for us to pick them out'* [PN_4/1]. This highlighted that programme tools developed to aid the assessment process and reduce staff time were not necessarily being used to their full effect. A common view was that it was the 'worried wells' who tended to be most interested in the HCs; *'we tend to have patients who show an interest in their health and so see them quite a lot, especially ones with existing chronic diseases'* [PN_2/1]. Here, the difficulty in engaging patients who were potentially able to receive the most benefit from a HC rather than those who frequently or routinely attended their surgery was evident. In response, practices periodically reviewed the non-responder list and reissued HC invites although we were not able to assess the success of this approach.

Theme 2: Assessment and referral protocols

The first sub theme, embedding procedures, related to the way in which key elements of the HC pathway were being utilised for example, laboratory services. Laboratory services (91.3%, $n = 23$) were most frequently used while Near Patient Testing (54.2%, $n = 13$) was the least used. Near Patient Testing during the period this study covers was not commissioned and its use suggested contrasting levels of understanding of the HC pathway between, or within, practices. Practices were most confident in first appointments (pre assessment blood tests, $Mean = 4.12$, $SD = .60$), invitations ($Mean = 4.04$, $SD = .79$) and laboratory tests ($Mean = 4.04$, $SD = .79$), but less confident in second appointments (CVD risk assessment, $Mean = 3.52$, $SD = 1.3$), risk communication ($Mean = 2.68$, $SD = .1.8$) and changing behaviours ($Mean = 2.44$, $SD = 1.6$). This suggested HCs were still being embedded into practice and that there was a need for further training and support.

The second sub theme, lack of connectivity, related to the notion that HCs and wider referral services were not well aligned. The majority of participants (83.3%, $n = 20$) were confident that patients referred for lifestyle services had received the service but there were mixed opinions concerning the quality of services. While Health Trainers were rated highly ($Mean = 4.13$, $SD = .83$) responses were low ($n = 8$), and some participants were not aware of what Health Trainers were. Smoking cessation was rated most highly ($Mean = 4.43$, $SD = .59$) although this was commonly provided in-house, thus potentially biasing the data. Weight management ($Mean = 3.76$, $SD = .90$) and alcohol services ($Mean =$

3.76, $SD = .90$) were the least rated services although it should be noted that coordinated weight management services were not well developed at this time.

Theme 3: Implementation and impact of Health Checks

The first sub theme, workloads, highlighted the perceived impact of HCs on day to day activities. The majority of practice staff (96%) estimated that between 1% and 25% of their job involved HCs suggesting variation in the way the implementation of the programme impacted practices. Approximately 40% of participants indicated that there had been issues with staffing levels, some attributing these issues to the extra workload created by HCs: *'NHS Health Check generates a huge workload for our staff in addition to what we do, a roughly 20 per cent additional workload'* [PN_3/4], and; *'Health Check has generated a lot of extra work for the practice'* [PM_3/2]. It was clear that there was variation in the perceived extent to which HCs had created additional pressures on staffing; *'Health Check does place additional pressure on the team when patients respond to invites as we are only a small practice'* [PM_6/2] for which flexible appointments and additional time for follow ups was recognised as important.

The second sub theme, ambivalence, related to the mix of perceptions concerning the overall impact of the HC programme. While the majority of participants (72%, $n = 18$) perceived that HCs were useful in early detection and the time to discuss patient health and lifestyles, there was caution concerning the programme's overall effectiveness; *'...it's hard to decipher the effects and I'm not convinced at a practice level but county-wide it might well be working. Perhaps we could investigate emergency admissions related to CVD conditions...'* [PM_7/3].

Theme 4: Areas for improvement

The first theme, diversity, referred to the delivery of HCs in a wider range of settings were commonly perceived as a potential area for improvement; *'I think workplace visits would be a really good way of enhancing how we deliver the programme, we'd have a captive audience and could advertise visits in the media'* [PM_6/2]. The second sub theme, training and improved clarity, highlighted a need to support practice staff. More than two-thirds (70.8%) of practice staff indicated that they had training in CVD prevention and 44% (n = 11) indicated that they required further training, while it was felt that there was a need to promote programme more effectively; *'...it needs to be better promoted and marketed, including exactly what its purpose is and for whom, we need more clarity regarding the boundaries of HC and the quota of patients needed to be put through'* [PM_11/2].

Discussion

Research has underlined the importance of staff training with respect to addressing variations in interpretation and implementation of HCs (McNaughton *et al.*, 2011). Although representing only one moment in time, the findings in the present study parallel other research assessing patient perceptions of HC where it is recognised that a greater understanding of the HC objectives and purpose of the programme is needed (Burgess *et al.*, 2014). While the lack of Practice Nurses in the sample meant we were unable to assess these issues in greater detail for staff routinely conducting patient assessments it is apparent that health professionals might require further support to improve understanding and awareness of HCs. This might include communicating the relevance of the

programme and CVD risk profiling. While the transfer of knowledge within GP practices was not assessed which is a limitation of the study, it was likely that high staff turnover impacted how knowledge was transferred, leading to knowledge gaps.

Data in this study are at the individual level and the sample size is small which is a limitation because the findings cannot be generalised more widely or taken to represent an accurate account of programme implementation. Further, we were unable to assess whether responses would have been different had additional clinical staff been interviewed, although recruiting GPs to the study was challenging. This aside, adopting continuous approaches to knowledge development and transfer might usefully address the diversity in the way HCs are implemented (Nicholas *et al.*, 2012) and improve confidence in HCs to deliver meaningful results although the complexity of the planning, systems and resources required to implement HCs is not underestimated. Knowledge updates might provide an initial step toward increasing staff confidence, skills and potential effectiveness of the HC programme. This might usefully be supported by routine local evaluations of HC implementation investing in and building positive relationships between practice staff and wider lifestyle services.

Conclusion

The findings suggest that the HC programme is still evolving. Challenges to successful implementation include a lack of clarity concerning the programme, potential lack of internal programme management, and contextual factors for example, staffing and staff training. There is a need for ongoing training and support which might include regular

knowledge updates, progress feedback, training in motivational interviewing and risk communication.

Key points

- There is a potential lack of clarity concerning the expectations for Health Checks and barriers to implementing the pathway consistently.
- Health professionals are not always confident in communicating risk or in supporting change in patient health behaviours.
- There is a need for ongoing training and support in respect of Health Checks for those directly engaged with its implementation.

Acknowledgements

We are grateful to the Gloucestershire Public Health and to those staff who assisted, particularly Dr. Ruth Wain, Michele Le Mero and Christian Howe. In addition Vicky Smith from NHS Gloucestershire CCG who enabled the primary care data and analysis.

Funding

This research was part of a larger evaluation of the NHS Gloucestershire Health Checks programme supported by funding from NHS Gloucestershire / Gloucestershire Public Health.

References

- Baker C, Loughren EA, Crone D, Kallfa N (2015) Patients' perceptions of a NHS Health Check in the primary care setting. *Quality in Primary Care* 22(5): 232-7
- Burgess C, Wright AJ, Forster AS, et al (2014) Influences on individuals' decisions to take up the offer of a health check: a qualitative study. *Health Expectations* doi: 10.1111/hex.12212
- ClinRisk (2014) QRisk Cardiovascular Disease Risk Calculator. ClinRisk, Leeds.
- Department of Health (2009) *Putting prevention first – NHS Health Check: Vascular risk assessment and management best practice guidance*, Department of Health, London
- Ellis N, Gidlow C, Cowap L, Randall J, Iqbal Z, Kumar J (2015) A qualitative investigation of non-response in NHS health checks. *Archives of Public Health* 73:14. doi 10.1186/s13690-015-0064-1
- Gale NK, Heath G, Cameron E, Rashid S, Redwood S (2013) Using the framework method for the analysis of qualitative data in multi-disciplinary health research. *BMC Medical Research Methodology*, 13(1): 117 doi:10.1186/1471-2288-13-117
- Graley CE, May KF, McCoy DC (2011) Postcode lotteries in public health—the NHS Health Check programme in North West London. *BMC Public Health* 11:738 11:738 doi: 10.1186/1471-2458-11-738
- Hipwell AE, Sturt J, Lindenmeyer A, et al (2014) Attitudes, access and anguish: a qualitative interview study of staff and patients' experiences of diabetic retinopathy screening. *BMJ Open* 2014;4 doi: 10.1136/bmjopen-2014-005498
- Ismail H, Atkin K (2015) The NHS Health Check programme: insights from a qualitative study of patients. *Health Expectations* doi: 10.1111/hex.12358

Jenkinson CE, Asprey A, Clark CE, Richards SH (2015) Patients' willingness to attend the NHS cardiovascular health checks in primary care: a qualitative interview study.

BMC Family Practice 16(1) doi: 10.1186/s12875-015-0244-7

McNaughton RJ, Oswald NTA, Shucksmith JS, Heywood PJ, Watson PS (2011) Making a success of providing NHS Health Check in community pharmacies across the

Tees Valley: A qualitative study. BMC Health Services Research 19;11:222 doi:

10.1186/1472-6963-11-222

Nicholas J, Burgess C, Dohia H, et al (2012) Variations in the organization and delivery

of the 'NHS health check' in primary care. Journal of Public Health 35(1): 85–91

Figure 1: Gloucestershire NHS Health Checks Care Pathway

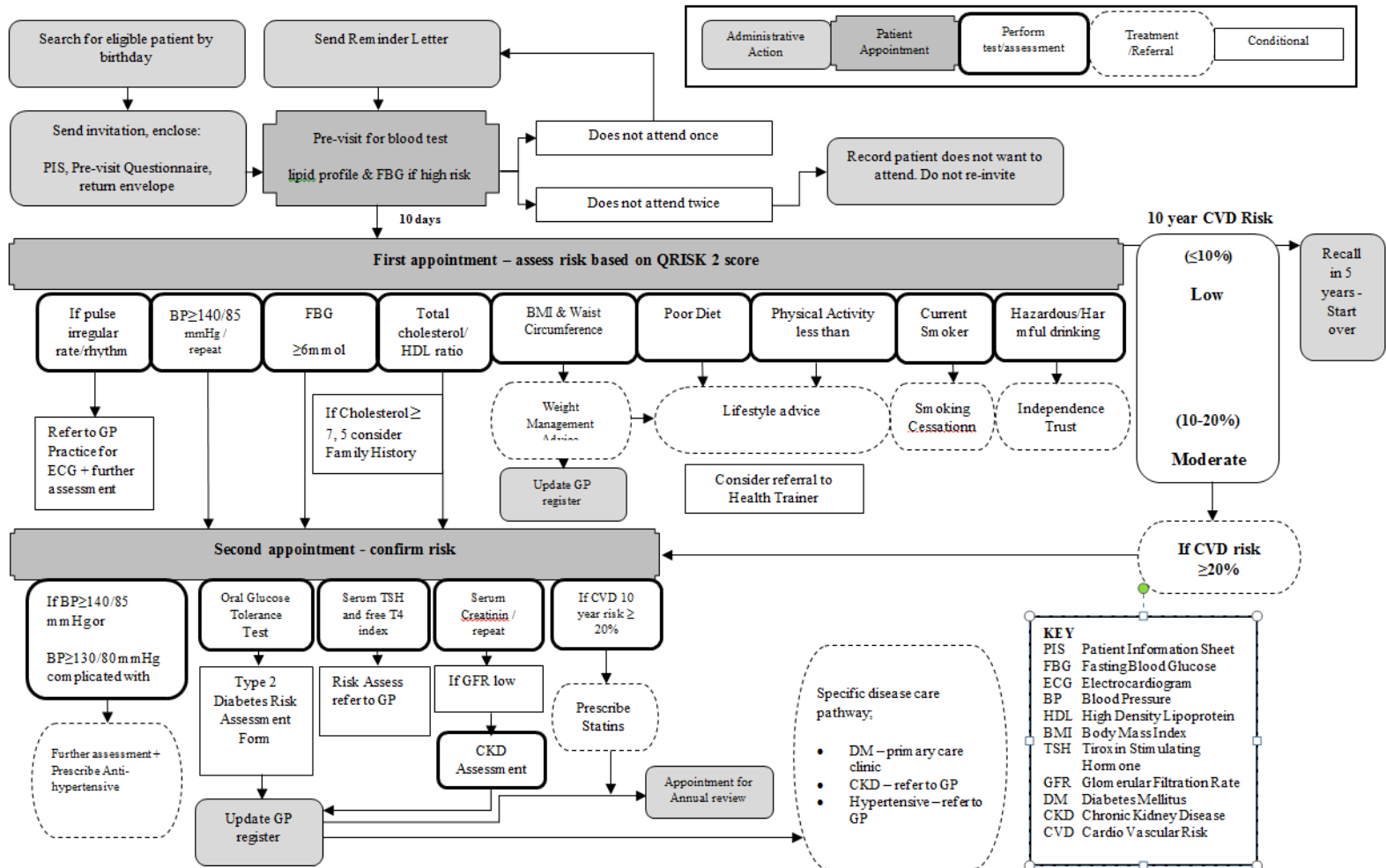


Figure 2: Data collection tool

NHS Health Check – Practice Data Collection Tool

(answer **Y** for **YES** and **N** for **NO** and give comments if applicable).

1. What is your role? _____

2. How much of your job involves Health Checks?

0% 1-25% 26-50% 51-75% 76-100%

3. How long have you been involved in NHS Health Checks? _____

4. How well is your practice doing at delivering the NHS Health Check? Score between 1-5, where 1 means poor and 5 means excellent. Give comments if necessary.

	Score(1-5)
A. Invitation (call and recall)	
B. Laboratory tests	
C. First appointments (risk assessment)	
D. Risk communication	
E. Changing behaviours	
F. Second appointments (including follow-ups)	

Comments: _____

5. What equipment do you use currently to do the Health Checks? Y/N	Do you have any issues with the equipment? Please comment
Electronic BP monitor	
NPT	
Lab	
Vital Signs Equipment	
Waist measurement tape	
Other (specify).....	

6. Have you experienced any issues with the risk calculator tool, Qrisk2? Y/N If yes, please comment _____

7. Have the patients that you have referred for lifestyle service received that service? Y/N

A. Do you record this? Y/N

B. If yes, where

8. How do you rate your local health lifestyle service provision?

Score between 1-5, where 1 means poor and 5 means excellent. Give comments if necessary.

	Score (1-5)	Who is your provider?
A. Weight management		
B. Smoking Cessation		
C. Alcohol (Independence Trust)		
D. Health Trainer		
E. Other (i.e. local authority services)		

8. Did you have any training in CVD prevention? Y/N

A. Do you require any further training? Y/N

If yes, in what area? _____

10. Have you had any issues with staffing levels? Y/N

A. If yes, how has this impacted on your plans?

Comment _____

11. Do you have a CVD GP lead in your practice? Y/N

12. How do you decide who to invite for Health Checks?

Do you use the following strategies?	Y/N	Comments
A. Random invitations?		
B. Most at risk first?		
C. Age?		
D. Opportunistic invitations?		
E. Other?		

13. Do you think this programme is preventing premature CVD? Y/N

Why? _____

14. What do you think works well? _____

15. Are there any other ways we can improve the programme? Y/N Comments

16. Have you encountered any problems with regard to the NHS Health Check data quality? Y/N

Read Coding

Running of MIQUEST Queries

System Reports

Other **Please specify** _____

17. Any other comments based on the responses