



This is supplemental material of the following published document:

**Olczak, Susie ORCID logoORCID: <https://orcid.org/0000-0001-9615-5514> and Kajang, Kasang (2021) Intersectionality in the Arts Panel Discussion. In: Intersectionality in the Arts Panel Discussion, 11th February 2021, Online.**

EPrint URI: <https://eprints.glos.ac.uk/id/eprint/15982>

#### **Disclaimer**

The University of Gloucestershire has obtained warranties from all depositors as to their title in the material deposited and as to their right to deposit such material.

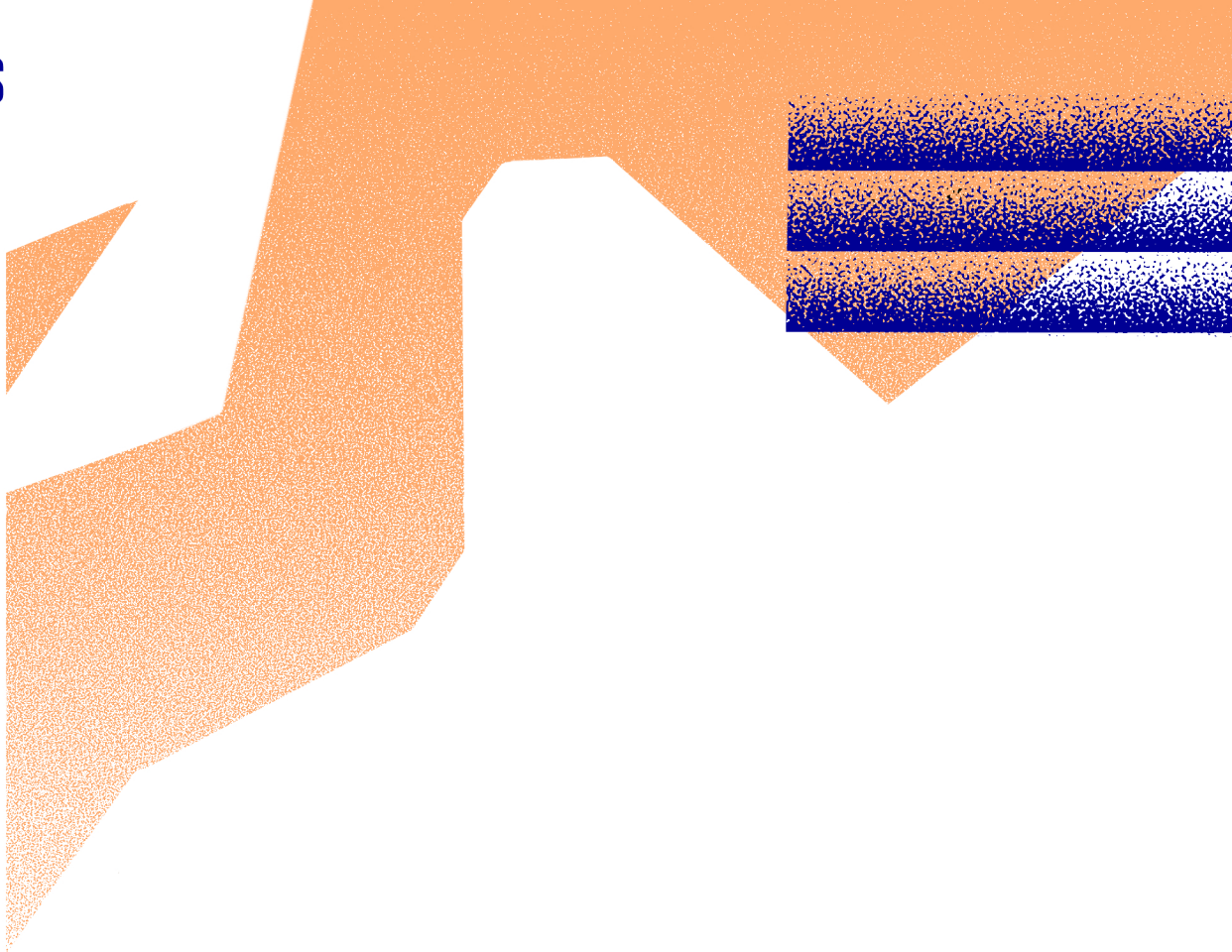
The University of Gloucestershire makes no representation or warranties of commercial utility, title, or fitness for a particular purpose or any other warranty, express or implied in respect of any material deposited.

The University of Gloucestershire makes no representation that the use of the materials will not infringe any patent, copyright, trademark or other property or proprietary rights.

The University of Gloucestershire accepts no liability for any infringement of intellectual property rights in any material deposited but will remove such material from public view pending investigation in the event of an allegation of any such infringement.

PLEASE SCROLL DOWN FOR TEXT.

**INTERSECTIONALITY IN THE ARTS**  
**ONLINE PANEL DISCUSSION**



**IITA**

**FEBRUARY 11TH**  
**7PM VIA ZOOM**

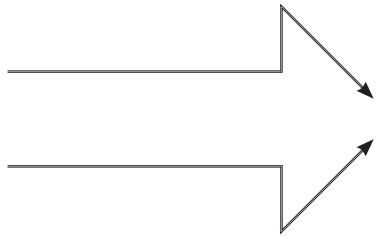
[HTTPS://WWW.EVENTBRITE.CO.UK/E/IITA-TICKETS-135168459501](https://www.eventbrite.co.uk/e/iita-tickets-135168459501)

# INTERSECTIONALITY IN THE ARTS

PANEL DISCUSSION

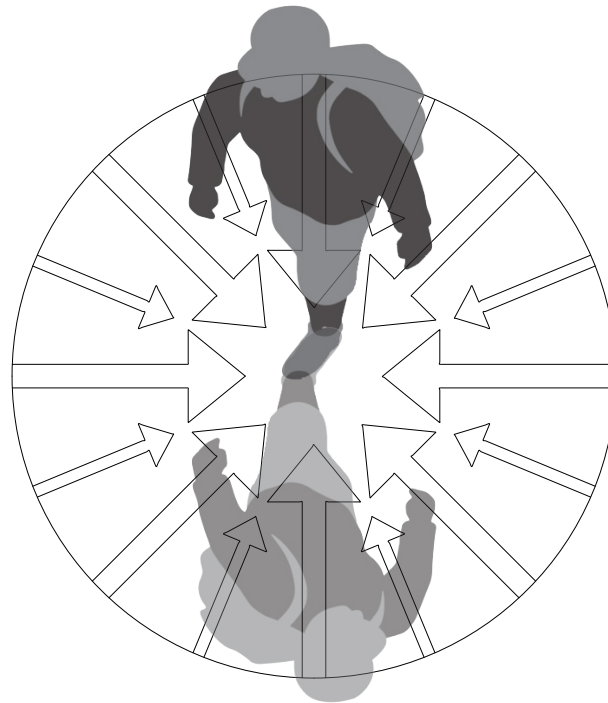
11.02.21



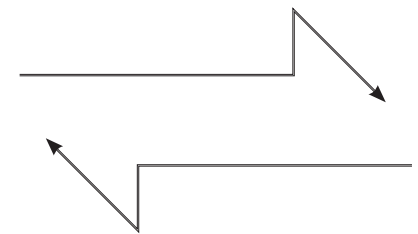


## .....WHY

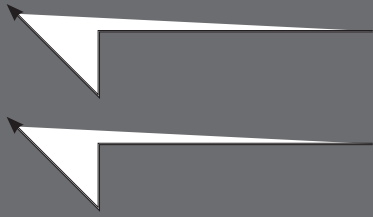
Within the UK there are complex barriers to education and employment within the arts and other fields. These include, but are not limited to; class, gender, sexual orientation, ethnicity and socioeconomic factors. This event aims to discuss the intersections between these factors and to consider how they affect the different disciplines within the creative sector at different career stages. Our aim is to be action focused and to discuss real tangible strategies that target breaking down these barriers with trackable results.



## HOW.....

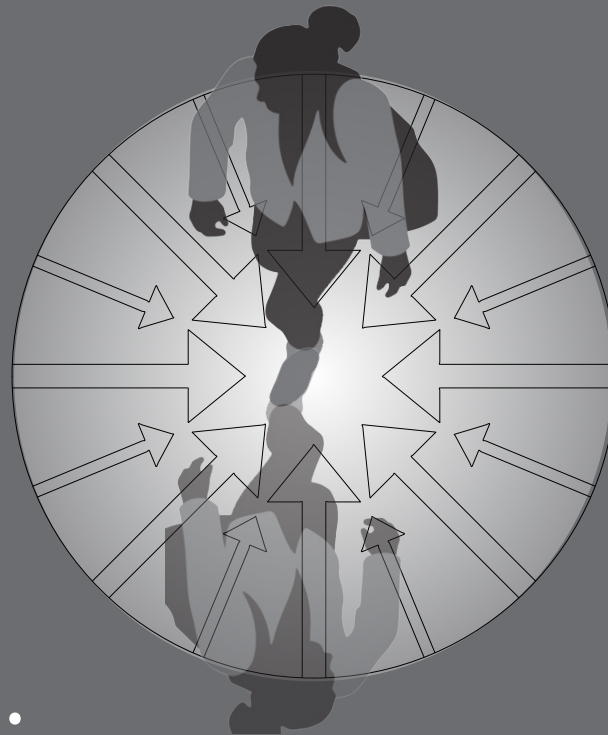


We have assembled a diverse panel - to come and “tell their story” - no holds barred. We believe that creating a safe platform for everyone to explain their truths and experiences will highlight correlations of key downfalls within the preexisting infrastructure. This will then allow us to develop forward strategies to provide positive change. Held online via zoom, we will be able to reach as wide and diverse an audience as possible across the UK.



.....WHO.....

This event is the brain child of Kasang and Susie - who met in 2019 via mutual contacts at the Royal College of Art. They began discussing lived experiences working within the creative sectors and this brought to light a shared passion for trying to make access to the arts, education and creative careers as accessible as possible for all. Coming with different experiences of the barriers that make this difficult, they felt an urgent need to find ways to discuss workable changes. Realising that you first have to understand the problem before you instigate any change - they envisioned a panel discussion, comprised of a diverse selection of individuals.



.....WHEN.....

SAVE THE DATE

11.02.21

@

7PM



# .....THE ORGANISERS .....



## SUSIE OLCZAK

### **Associate Lecturer, Artist**

BA (Hons), MA  
She/ Her - Heterosexual

Susie Olczak is a multidisciplinary artist with a focus on sculpture. Her work has been shown internationally in Japan and the United States. She has exhibited around the United Kingdom, attended residencies in Finland and had work commissioned by corporate clients located in Singapore. She has also been commissioned to produce public artworks by BBC Scotland, Charles Saatchi at the Big Chill Festival, and the National Trust.

Susie Olczak is an associate lecturer in Fine Art at University of Gloucestershire. She has been a visiting lecturer at Goldsmiths University of London, The Royal College of Art, University of the Arts London, University of Cambridge, University of Westminster, Falmouth University, University for the Creative Arts, University of Brighton, and Cambridge School of Art.



## KASANG KAJANG

### **Architect & Project Manager**

AA Dipl (Arch), ARB, RIBA, LEED  
She/ Her - Gay

Kasang is an Architect, designer and Project Manager. To date, Kasang has worked as a Project Architect in offices including Foster + Partners, Cloud 9 and Originate, implementing projects internationally and in the UK. She has been involved in a diverse mix of projects with many of her efforts being nominated / short listed finalist for international awards.

Kasang has also worked in academia as a director of a visiting school linked to the Architectural Association (AA), where she trained. During her time at the AA, Kasang developed energy sensitive models with a sustainable and innovative design, focusing on the use of new materials and pushing the boundaries of how we build. She currently works in social housing and runs her own architectural business.



## .....THE PANEL



### VALENTINE MUROMBE-CHIVERO

**Communications within Equality**

BA (Hons), Dipl, MA

He/ Him - Heterosexual

Valentine Murombe-Chivero is a communications professional with twenty years' experience of working for public sector, social justice organisations.

This has given him a good understanding of discrimination across all areas of life, the life changing barriers it creates for its victims, and the importance of taking action to remove those barriers and create a fairer society.

As a Black British man he also understands discrimination for his own lived experiences.



### MATTHEW DONNELLY

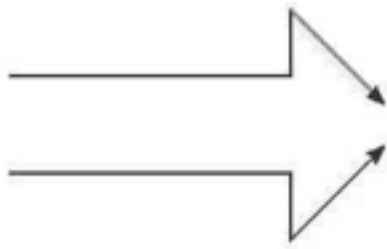
**Artist**

BA (Hons)

He/ Him - Gay

Glasgow based artist and craftsman, Matthew Donnelly, has been honing his skills in stained glass and mosaic over several years, working on site-specific commissions and conservation work.

He has a long standing interest in building crafts, geometry and architecture and recently completed the Prince's Foundation's Building Craft Programme. Matthew has an MLit in Fine Art Practice, Sculpture (2015) and a BA (Hons) in Fine Art, Environmental Art (2010) from the Glasgow School of Art.



## .....THE PANEL



**LISE BELL**  
**Creative Producer**  
BA  
They/ Them - Queer

Lise Bell has over a decade of experience working within theatre and theatre production with a specific focus on delivering Capital redevelopments.

Lise is currently working with visual artist Than Hussein Clark to develop a new theatre and arts space in South London. Previously Lise worked as Executive Director and Joint CEO at the Gate Theatre.

Before joining the Gate Lise was the Producer at the Bush Theatre leading on the development of their new studio and at Kiln Theatre supporting the Kiln's capital project, alongside setting up their own company PaperMash.



**LUCIA DE PALAU**  
**Artist**  
BA, MA  
She/ Her - Queer

Lucía de Palau (b. 1992, Barcelona) is an artist using speculative fiction stories within installations, music, writing, live-action and animation as tools for critical positioning, to generate alternative narratives.

Those speculative spaces are an open door for generating alternative narratives outside the norm, giving life to different possibilities of care, body agency, and community alliance. Becoming a place of queer resistance.

She has also worked with several queer artists in collective projects, whether it was with a fundraising goal for LGBT communities in need or to open up access to specific critical education, such as the Free School of Critical Feminisms she co-organized on the 2019 iteration.