



This is a peer-reviewed, post-print (final draft post-refereeing) version of the following published document:

Olczak, Susie ORCID logoORCID: <https://orcid.org/0000-0001-9615-5514> (2023) Super Sewer: An ongoing series of research seminars: Including Spike Island, Bristol and Hypha London. In: Super Sewer, 21st January 2023 and 7th May 2023, Spike Island and Hypha Studios, London.

EPrint URI: <https://eprints.glos.ac.uk/id/eprint/15980>

Disclaimer

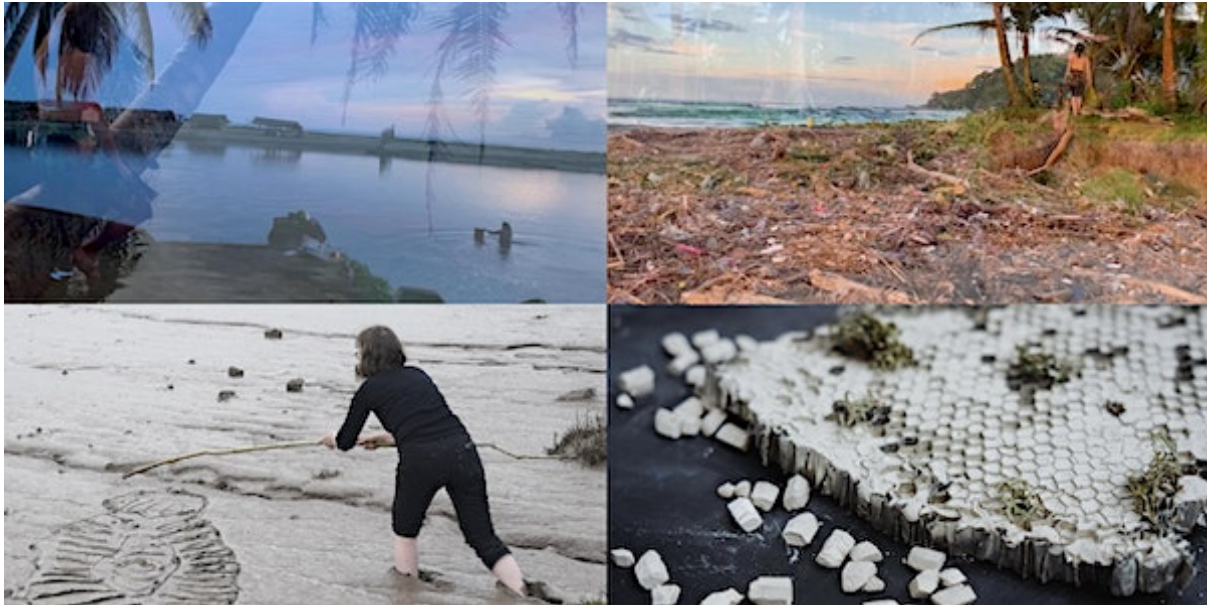
The University of Gloucestershire has obtained warranties from all depositors as to their title in the material deposited and as to their right to deposit such material.

The University of Gloucestershire makes no representation or warranties of commercial utility, title, or fitness for a particular purpose or any other warranty, express or implied in respect of any material deposited.

The University of Gloucestershire makes no representation that the use of the materials will not infringe any patent, copyright, trademark or other property or proprietary rights.

The University of Gloucestershire accepts no liability for any infringement of intellectual property rights in any material deposited but will remove such material from public view pending investigation in the event of an allegation of any such infringement.

PLEASE SCROLL DOWN FOR TEXT.



Jan 21

IN-PERSON | Super Sewer: A symposium on sustainable art practices

Join speakers from the Spike Island community for a symposium discussing materials-based art practices through the lens of sustainability.

By Spike Island

When and where

Date and time

Sat, 21 January 2023, 11:00 – 13:15 GMT

Location

Spike Island 133 Cumberland Road Bristol BS1 6UX

What does it mean to have a material practice in relation to climate change? How can material processes be adapted to become more sustainable?

Join artist and Spike Island Associate Susie Olczak for a discursive research-based symposium exploring the different ways in which artists are engaging with sustainability and ecology. The session will discuss a variety of practices, materials and methodologies, with particular reference to creative responses to landscapes and waterscapes affected by climate change.

The session will start with a presentation from Susie exploring her practice-based research from a 3-week research residency in Panama in June 2022. The residency was organised by La Wayaka Current, a nomadic arts residency and research project curated in connection to remote natural environments and communities. La Wayaka Current aims to develop new perspectives through creative practice and critical thought at a time of ecological and climatic crisis. Susie will then present a review of best practice for artists, highlighting projects where research methodologies have been adapted to become more sustainable.

Following this, artists and Spike Island Associates Sarah Rhys, Jo Ball and Veronica Vickery will each present on their artistic practices. The presentations will address the decisions the artists have made within their practices in relation to sustainability, both in terms of material and environmental effect, but also in terms of the logistical and financial sustainability.

The event will then open up to the audience through a round table discussion about the topic with some prompts, exploring different approaches to sustainability as artists. Participants are encouraged to come with questions and specific examples to discuss, but no previous experience or knowledge is required to participate.

Susie Olczak

Susie Olczak is a multidisciplinary artist with a focus on sculpture. Her work focuses on the idea of adaptation. She is co-founder of Conscious Isolation, an online space dedicated to speaking about creative experiences in the context of current society. Susie also lectures in Fine Art at University of Gloucestershire and is a member of the Space Place Practice Network, a research collective at Bath Spa University. Susie has a BA (Hons) in Fine Art, Sculpture and Environmental Art from the Glasgow School of Art (2010), and an MA in Sculpture at the Royal College of Art (2019).

Super Sewer is a series of events led by Susie Olczak, exploring sustainable art practices, material usage and landscapes affected by climate change.

www.susieolczak.co.uk

Image: Susie Olczak and Emma Elliott, still from *Where the Jungle Meets the Sea... The World is Split in Two* (2022). Two Channel Video.



Jo Ball

Jo Ball is an artist based in Bristol. Her work has a strong commitment to process and the act of making is central. Her installation work is situated between drawing and sculpture and uses a range of techniques and materials to explore ideas of fragility, loss and repair. Gardening feeds into Jo's work through the use of collected plant materials, and in her socially-engaged projects, she uses growing as a way to connect people to places and each other. Most recently her work has been shown at The Verge, Glasgow (2022), Kingshill House, Somerset (2022), and in 2021 she was awarded DYCP funding by Arts Council England.

www.jo-ball.info

Image: Jo Ball, *Trying to hold* (2022)



Sarah Rhys

Sarah Rhys is a multi-disciplinary artist who is interested in the re-interpretation of landscape, geological material and the rural. She is drawn to using a variety of materials; often geological matter such as coal, salt and porcelain. More recently she has been using plant-based material highlighting the fragility of our ecologies. *Cryptic Landscape* was shown at The National Botanic Garden of Wales 2021-22. Sarah was part of a collaborative project and installation titled *In Free Fall* which was shown at The Centre of Gravity, Bristol 2021.

Sarah has a studio at Spike Island and lives between Bristol and rural West Wales. She originally studied Architectural Glass at Swansea School of Art, later she qualified as a teacher with a BA QTS from UWE and has an MFA from Bath Spa University as well as a post-graduate diploma in Multi-disciplinary Printmaking from UWE, Bristol. Alongside her arts practice, Sarah spent many years lecturing and teaching in Bristol.

Sarah was invited to contribute a chapter to the recently published book *HON Artistiaid Benywaidd Yng Nghymru / Women Artists in Wales* featuring 10 female contemporary artists in Wales, published by The H'mm Foundation.

www.rhysstudio.org



Fragile Earth 2021. Sarah Rhys

Veronica Vickery

Veronica Vickery is a visual artist living on a boat near Bristol, and has a studio at Spike Island. She is drawn to places and materials that are constantly changing: tidal mudflats, river detritus, floating carcasses and rusty paint-pitted boats. She works with a mixed practice using living, abandoned, foraged and repurposed materials to respond to living in a dynamic river environment and wider eco/political concerns. Her current enquiry is supported by a Developing Your Creative Practice grant (ACE, 2022/23) and a WEVAA R&D bursary (2022). Previous work includes 'Vessels, Water, Mud, Care', (Spike Island public programme, 2021) and 'The Best of Bristol Living' (Centre of Gravity, 2020). She holds an art-practice-based PhD in Cultural Geography from University of Exeter (2016) and is an Honorary Research Associate at University of Bristol.

www.veronicavickery.co.uk

Image: Veronica Vickery, *DIAMATEOUS LIFE, THROUGH THE LOOKING GLASS* (2021). Performance to camera.

