



This is a presentation of the following published document and is licensed under All Rights Reserved license:

**Olczak, Susie ORCID logoORCID: <https://orcid.org/0000-0001-9615-5514> (2023) Experiential Artistic Processes as Research Symposia in Latvia and Stockholm. In: Experiential Artistic Processes as Research Symposium in Latvia and Stockholm, 2022, Latvia and 2023, Stockholm University of the Arts, Latvia and Stockholm.**

Official URL: <https://www.nsuweb.org/experiential-artistic-processes-as-research-symposium/>

EPrint URI: <https://eprints.glos.ac.uk/id/eprint/15968>

#### **Disclaimer**

The University of Gloucestershire has obtained warranties from all depositors as to their title in the material deposited and as to their right to deposit such material.

The University of Gloucestershire makes no representation or warranties of commercial utility, title, or fitness for a particular purpose or any other warranty, express or implied in respect of any material deposited.

The University of Gloucestershire makes no representation that the use of the materials will not infringe any patent, copyright, trademark or other property or proprietary rights.

The University of Gloucestershire accepts no liability for any infringement of intellectual property rights in any material deposited but will remove such material from public view pending investigation in the event of an allegation of any such infringement.

PLEASE SCROLL DOWN FOR TEXT.

Nordic Summer University Circle 7 Winter Symposium  
The experiential in artistic practice

**Social Distance, Social Togetherness and the Experience of the Other**

Reciprocity: Working-with as a methodology and the importance of listening to local knowledge and to experiences of otherness with people and location

Susie Olczak

[www.susieolczak.co.uk](http://www.susieolczak.co.uk)

@Susieolczak

PhD candidate and lecturer in Fine Art

University of Gloucestershire

You've started walking



Oh were you waiting for me?



I've lost you

The world seems more vibrant nowadays  
in contrast to everything on the screen



*Are we nearly there? In  
Collaboration with Sally  
Stenton  
2020  
Moving Image  
5 minutes*



Armila, Panama. The Darién Gap with thanks to the Guna People and La Wayaka Current



Still from *Where the Jungle Meets the Sea, The World is Split in Two*. Emma Elliott and Susie Olczak



Is the technology  
helpful?



Does it get in the way?



I struggle to go slowly







Still from *Where the Jungle Meets the Sea, The World is Split in Two*. Emma Elliott and Susie Olczak





*Hope*  
2022  
Mixed media  
Armila, Panama



Stills from *Where the Jungle Meets the Sea, The World is Split in Two*. Emma Elliott and Susie Olczak



Stills from *Where the Jungle Meets the Sea, The World is Split in Two*. Emma Elliott and Susie Olczak





Stills from *Where the Jungle Meets the Sea, The World is Split in Two*. Emma Elliott and Susie Olczak





Collaborative Print using Achiote Died fabric. Armila, Panama  
Emma Elliott and Susie Olczak







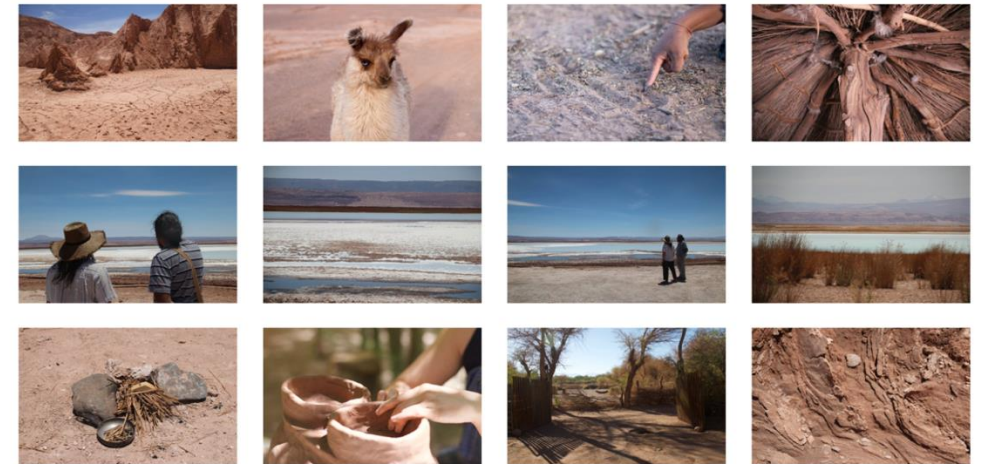
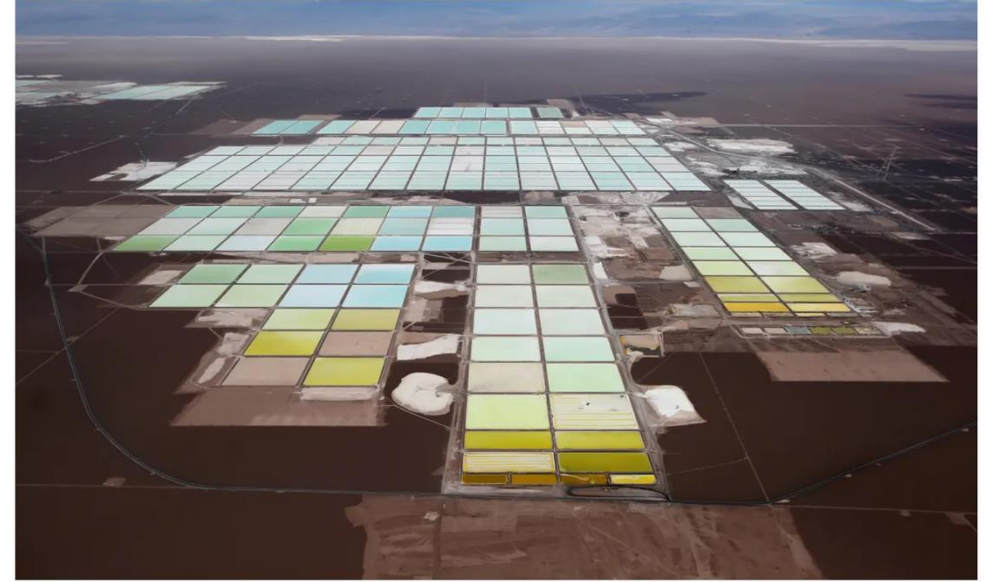
*It's going to be okay*  
Mixed media  
2022



Photo credit Clement Leveque



In Solidarity, Emma Elliott and Susie Olczak. Wanderland, Tremenhire Sculpture Garden, Royal Society of Sculptors



North, East, South, West, 2023-2024, Atacama Chile and UK as part of Narratives of the Extreme, Envisioning Positive Climate Futures

This crime has been here  
for all of lockdown.



Maybe it's so they can  
watch you?



