



This is a presentation of the following published document and is licensed under Creative Commons: Attribution-Noncommercial-No Derivative Works 4.0 license:

Hall, Kimberly Ellen ORCID logoORCID: <https://orcid.org/0000-0002-5544-8764> and El Masri, Omar ORCID logoORCID: <https://orcid.org/0000-0003-0554-590X> (2023) Inclusivity and Place: Where a University and Neighbours Draw Together. In: AMPS research: Teaching Beyond the Curriculum, Focus on Pedagogy 2023, 15-17 November 2023, online.

Official URL: <https://amps-research.com/conference/teaching-2023/>

EPrint URI: <https://eprints.glos.ac.uk/id/eprint/14048>

Disclaimer

The University of Gloucestershire has obtained warranties from all depositors as to their title in the material deposited and as to their right to deposit such material.

The University of Gloucestershire makes no representation or warranties of commercial utility, title, or fitness for a particular purpose or any other warranty, express or implied in respect of any material deposited.

The University of Gloucestershire makes no representation that the use of the materials will not infringe any patent, copyright, trademark or other property or proprietary rights.

The University of Gloucestershire accepts no liability for any infringement of intellectual property rights in any material deposited but will remove such material from public view pending investigation in the event of an allegation of any such infringement.

PLEASE SCROLL DOWN FOR TEXT.

INCLUSIVITY AND PLACE: WHERE A UNIVERSITY AND NEIGHBOURS DRAW TOGETHER

/DR OMAR EL MASRI
/KIMBERLY HALL
/LISA BRINICOMBE
/JESSICA MURE
/EMMA PARKINSON



INTRODUCTIONS

/DR OMAR EL MASRI
LECTURER, CRIMINOLOGY, SCHOOL OF NATURAL,
SOCIAL, AND SPORTS SCIENCES

/KIMBERLY ELLEN HALL
SENIOR LECTURER, ILLUSTRATION, SCHOOL OF ARTS

/LISA BRINICOMBE
EQUALITY, DIVERSITY AND INCLUSION ADVISOR

/JESSICA MURE
PHD RESEARCHER, HUMANITIES

/EMMA PARKINSON
MA RESEARCHER, ILLUSTRATION

/CHELTENHAM
GLOUCESTERSHIRE FESTIVAL TOWN



BACKGROUND



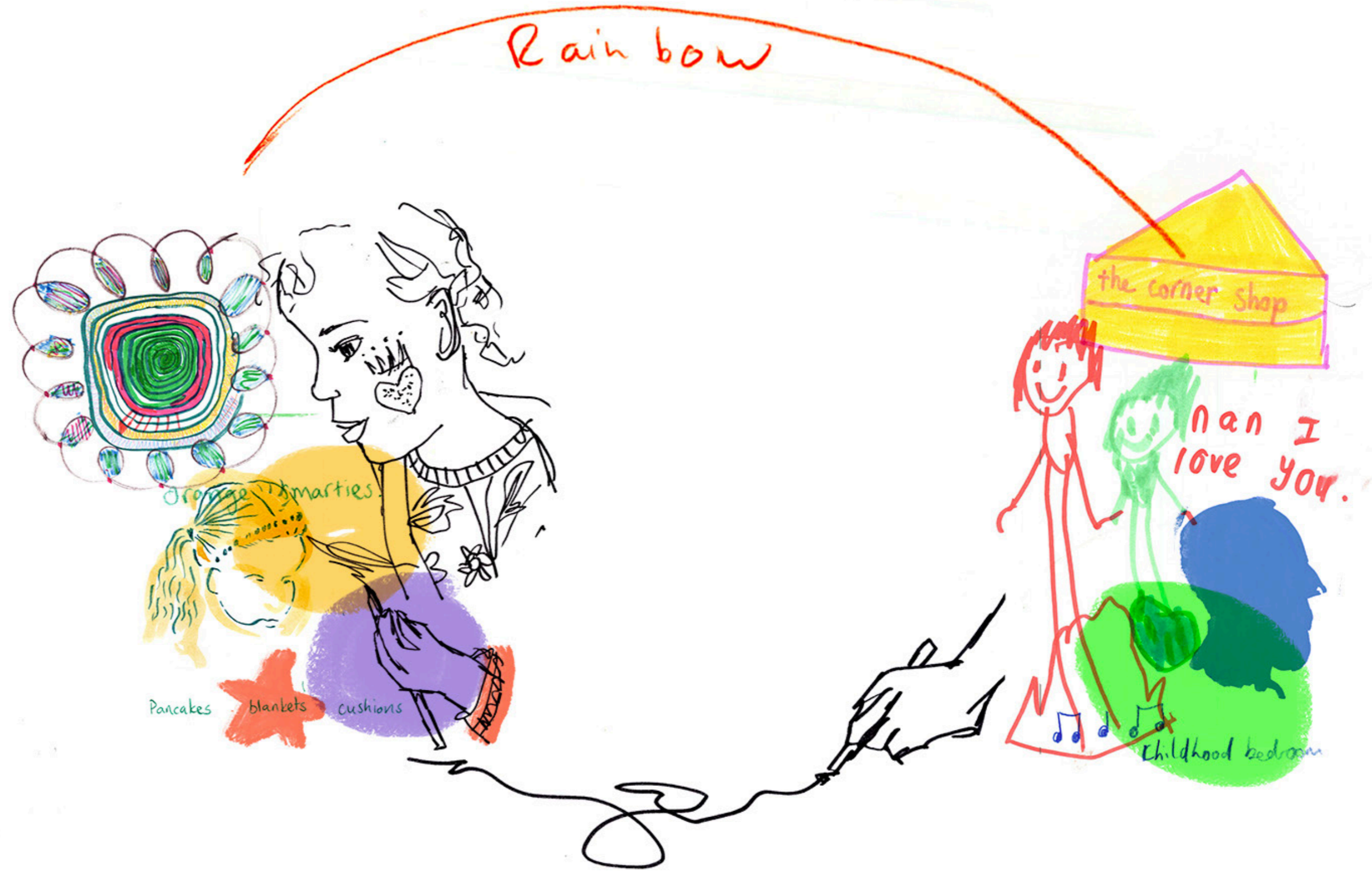
ARTIST: POGO – CHELTENHAM ST PAULS NEIGHBOURHOOD



LEFT: ST PAUL'S NEIGHBOURHOOD; BELOW: INKIE'S MURAL ON ST PAUL'S ROAD PAYS TRIBUTE TO THE AREA AND TO JULIAN A LOCAL SHOPKEEPER WHO PASSED AWAY RECENTLY



SOCIAL SCIENCES
(OMAR)
+
ILLUSTRATION (KIM)
=
NEW DIRECTIONS
FOR BOTH OF US



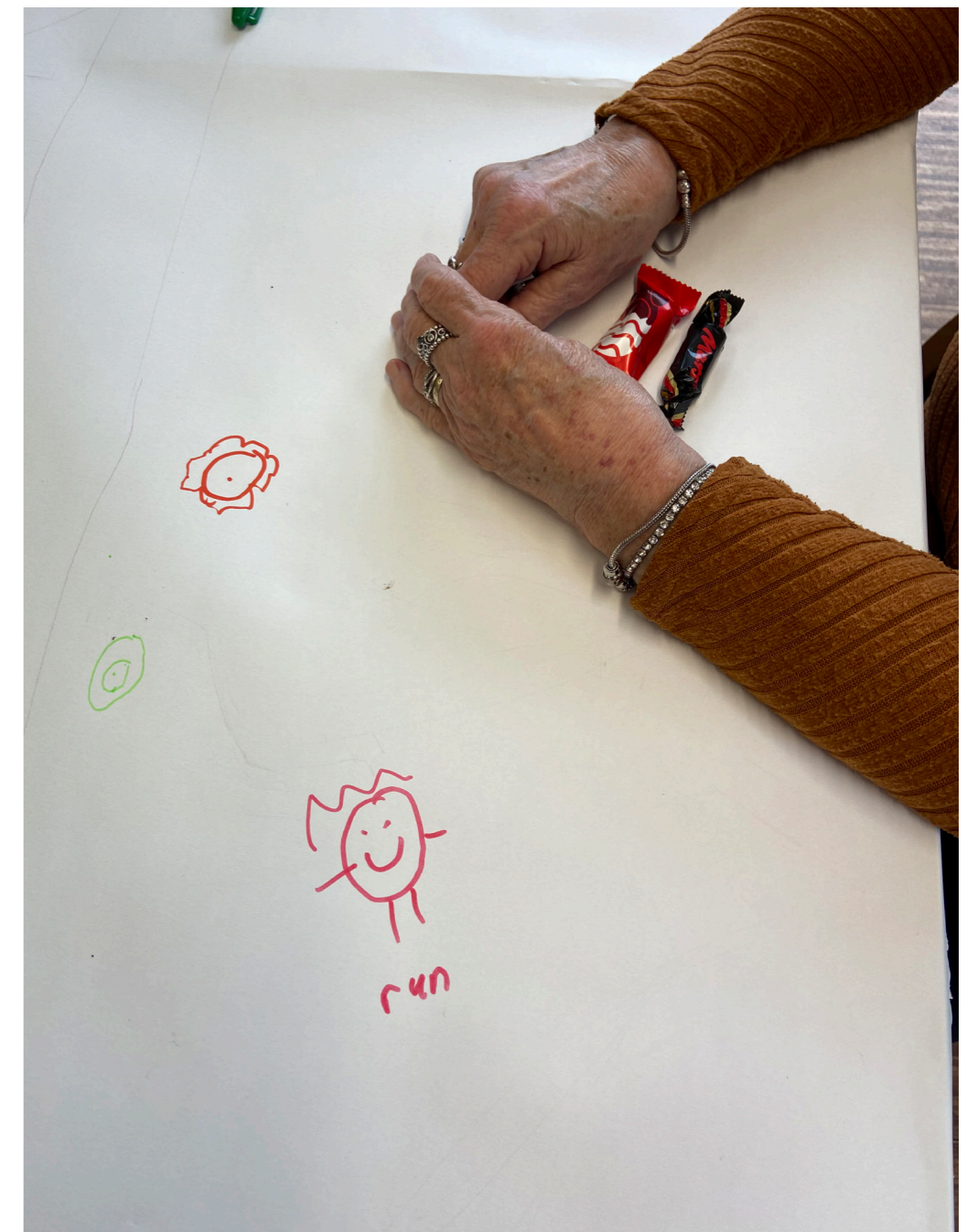
**PARTICIPATORY ARTS-BASED RESEARCH
SOCIALLY ENGAGED ART
PARTICIPATORY ACTION RESEARCH
PRACTICE AS RESEARCH**

WORKING
SOCIOLOGICALLY
AND ARTISTICALLY
ABOUT PROBLEMS
ON INCLUSIVITY



PARTICIPANTS AT WILSON MUSEUM MEMORY CAFÉ EVENT

OUR METHODS



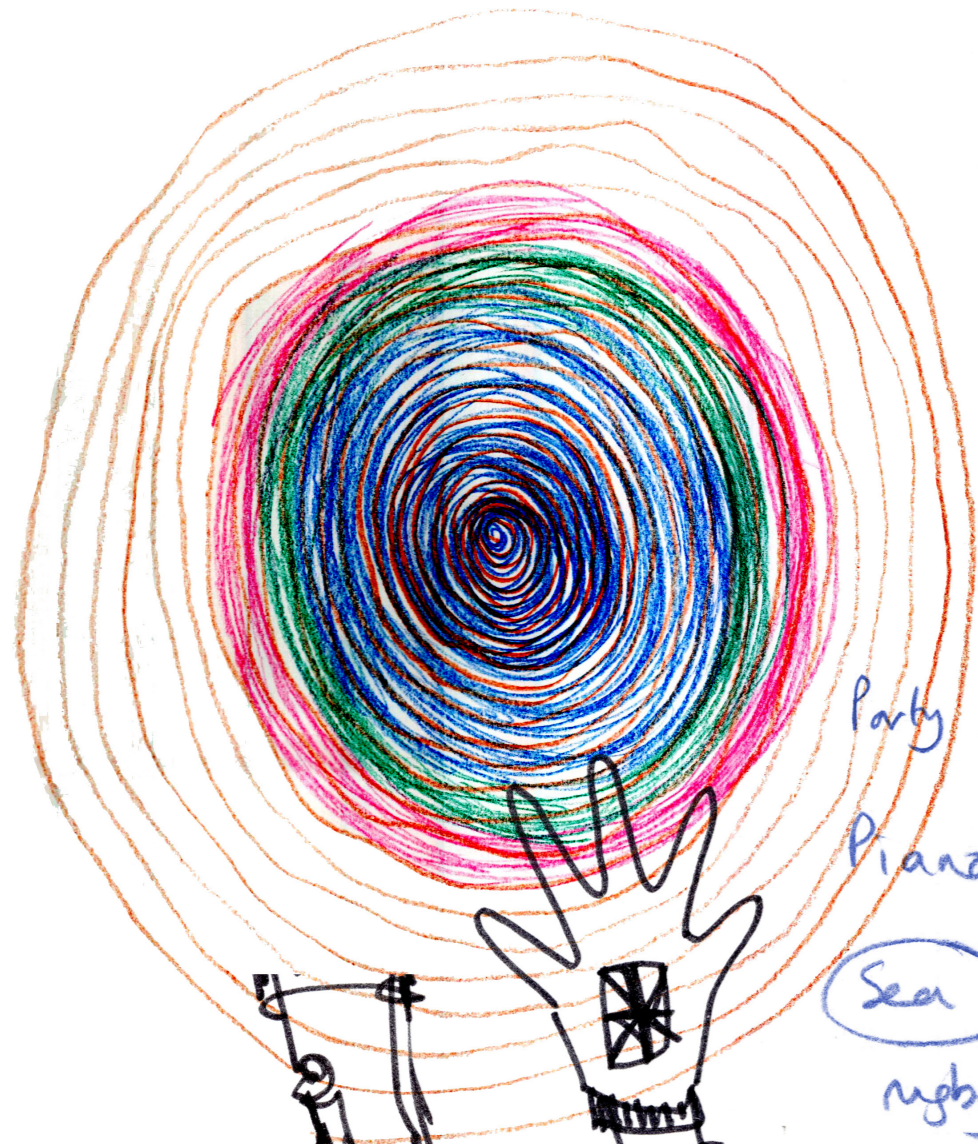
COLLABORATIVE MAP MAKING WORKSHOP SESSION MARCH 2023 AT ST PAUL'S HUB

WE FOCUSED ON DRAWING AS OUR METHOD OF LEARNING,
COMMUNICATION, AND COMMUNITY-BUILDING OF THIS PROJECT.



ENGAGING WITH VISUAL OR DRAWN COMMUNICATION, RATHER THAN WRITTEN CAN ALLOW FOR NEW, DEEPER AND MORE INCLUSIVE UNDERSTANDINGS TO DEVELOP.





Party together

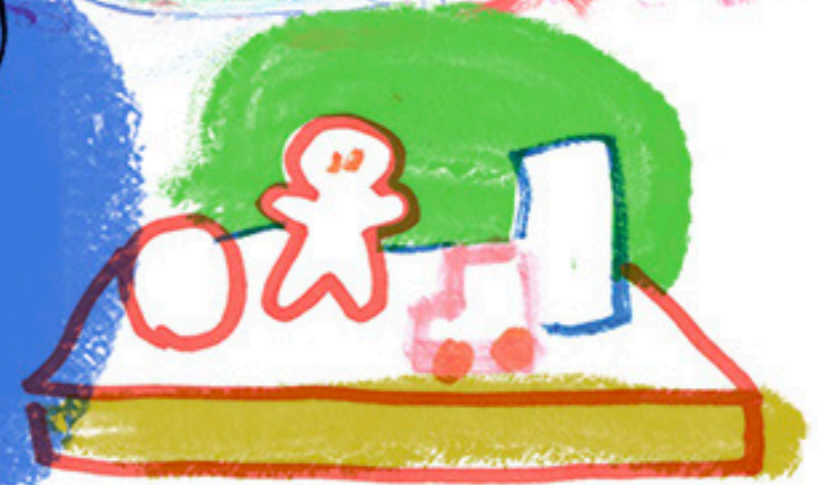
Piano

Sea

rugby

laughing

Grass nests



Toy sale



brother jumping out his wardrobe with his scary teddy.

COMMUNITY WORKSHOPS AND CONSULTATIONS



COLLABORATIVE MAP FROM PARTICIPANTS AT ST PAUL'S HUB MARCH 2023



DRAWING FROM PARTICIPANTS MEMORIES (KEHALL)



NEXT STEPS

- /PAINT DAYS
- /INSTALLATION
- /TOOL KIT FOR FUTURE PROJECTS



BIBLIOGRAPHY

- Barry, Lynda (2015), *Syllabus: Notes from an Accidental Professor*, Montréal, Canada: Drawn & Quarterly.
- Carney, P. (2021) *Drawing to Learn Anything: No Drawing Skills Required*. Oxford, UK: Loughborough Design Press.
- Fernandes, M. A., Wammes, J. D. and Meade, M. E. (2018) 'The Surprisingly Powerful Influence of Drawing on Memory', Current Directions in Psychological Science, 27(5), pp. 302-308. doi: 10.1177/0963721418755385. Available at: <<https://www.youtube.com/watch?v=9L5XP-W5yE8>> [Accessed 29 June 2022].
- McCloud, S. (1994) *Understanding Comics*. New York, NY: William Morrow Paperbacks.
- Paepcke-Hjeltness, V., 2022. Engage with Verena Paepcke - Hjeltness | Sketchnoting: fomentando la alfabetización visual. [online] Youtube.com.
- Rohde, M., 2022. Rohdesign. [online] Rohdesign. Available at: <<https://rohdesign.com>> [Accessed 29 June 2022].

THANK YOU

OELMASRI@GLOS.AC.UK & KHALL5@GLOS.AC.UK

[HTTP://PITTVILLEPRESS.SUBSTACK.COM](http://pittvillepress.substack.com)



DRAWING FROM
PARTICIPANTS
MEMORIES
(KEHALL)