



This is a peer-reviewed, post-print (final draft post-refereeing) version of the following published document, © 2022 Ben Fisk. All rights reserved. and is licensed under All Rights Reserved license:

Fisk, Benjamin ORCID logoORCID: <https://orcid.org/0000-0003-2389-4521> (2022) Evidencing Success and Successful Evidence in Restorative Work: An Overview of initial Findings. In: Restorative Justice Council 4th Annual Conference, November 21st - 22nd 2022, Virtual.

EPrint URI: <https://eprints.glos.ac.uk/id/eprint/11899>

Disclaimer

The University of Gloucestershire has obtained warranties from all depositors as to their title in the material deposited and as to their right to deposit such material.

The University of Gloucestershire makes no representation or warranties of commercial utility, title, or fitness for a particular purpose or any other warranty, express or implied in respect of any material deposited.

The University of Gloucestershire makes no representation that the use of the materials will not infringe any patent, copyright, trademark or other property or proprietary rights.

The University of Gloucestershire accepts no liability for any infringement of intellectual property rights in any material deposited but will remove such material from public view pending investigation in the event of an allegation of any such infringement.

PLEASE SCROLL DOWN FOR TEXT.

EVIDENCING SUCCESS AND SUCCESSFUL EVIDENCE IN RESTORATIVE WORK:

AN OVERVIEW OF INITIAL FINDINGS

4th Annual Restorative Justice Council Conference 2022

November 21st 2022.
University of Gloucestershire



Benjamin Fisk
B.Sc, M.A, RSW, M.Sc.

ABOUT ME



Registered Social Worker

Complex Needs, Child Health & Disability, WYP Hate Crime Scrutiny Panel and Short Breaks Charity Trustee.

FGC Coordinator

Supporting creation of family plans around welfare, child protection and edge of care concerns.

International School Leader

Former Head of Boarding in Shanghai and Associate Dean of Boarding in South Korea.

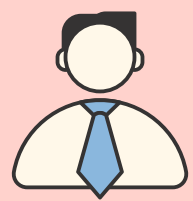
**What is success
in Restorative
Work and how is
it defined?**

**What service
data is used to
evidence this?**



All-Party Parliamentary Group on Restorative Justice

THIS RESEARCH WILL EXPLORE 2 OF THE APPG ON RJ'S KEY RECOMMENDATIONS:



2. Standardise the sharing of information.



3. Improving quality through effective monitoring and evaluation.

MULTIPLICITY OF DATA

The APPG highlighted:

- reporting templates
- computer systems
- reporting requirements
- variances in definitions

Knowledge gaps identified:

- How to record
- When to record
- What to record
- Uses for data

EVIDENCING SUCCESS & SUCCESSFUL EVIDENCE

PhD Commissioned by RJC to undertake 3 tasks:

1

Assess recording and monitoring approaches across Restorative agencies

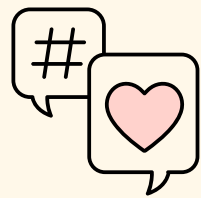
2

Consider constitution of 'Efficiency', 'Effectiveness', and 'Impact' in restorative interventions.

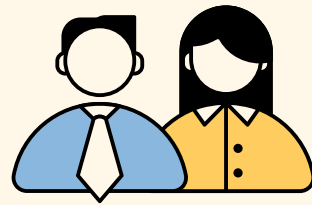
3

Contribute to the development of a standardised reporting framework for measurement

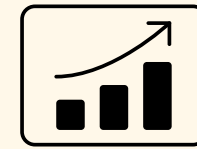
THE RESEARCH



Survey for
professionals



Interviews with
Professionals



Collection of service
documents



Analysing data to
identify themes

SUCCESS

DEFINING SUCCESS

- "the achieving of the results wanted or hoped for"
- "a favorable or desired outcome"

SUCCESS IN LITERATURE

- Doak & O'Mahony (2018)
- Hoyle & Rosenblatt (2016)
- Llewellyn et. al (2013)

- Outcomes!
 - Service and program evaluation
 - Contextual
 - Different intervention types
- Leadership & Management literature offer insight into measuring success
- Use of restorative values to measure
- Barriers to success, repeating history, short coming of programs, targeting only relatively low-level crime

Llewellyn et al. (2013) "Imagining success for a restorative approach to justice: Implications for measurement and evaluation." *Dalhousie LJ* 36

Doak, J., & O'Mahony, D. (2018). Evaluating the success of restorative justice conferencing: A values-based approach. In *Routledge international handbook of restorative justice* (pp. 211-223). Routledge.

Hoyle, C. & Rosenblatt, F. (2016) Looking Back to the Future: Threats to the Success of Restorative Justice in the United Kingdom, *Victims & Offenders*, 11:1, 30-49, DOI: 10.1080/15564886.2015.1095830

Evaluation outcomes as success?

Education	Social Care	Police & Crime
REDUCTION IN EXCLUSIONS / SUSPENSIONS	REDUCED COSTS	REDUCED COSTS
REDUCTION IN BULLYING INCIDENTS	REDUCTION IN ADOPTIONS	DECREASED RECIDIVISM
INCREASED ACADEMIC ACHIEVEMENT	REDUCTION IN CHILD PROTECTION PLANS	REDUCED SEVERITY OF RE-OFFENDING
SATISFACTION WITH PROCESS	SATISFACTION WITH PROCESS	SATISFACTION WITH PROCESS

DEFINING SUCCESS

- **Effectiveness**
- **Efficiency**
- **Impact**

- **Success is different for every professional**
- **Hard vs. Soft Outcomes**
- **Short & Longitudinal**

DEFINING SUCCESS

Please complete my survey by scanning this QR code or entering this URL into your web browser

<https://forms.gle/A8LXfE6giDVbNKwdA>



DATA

IMMEDIATE QUESTIONS ABOUT DATA

- 1 What is being recorded/measured?
- 2 How is the data captured?
- 3 How is the data used?
- 4 Who decides what to record?
- 5 Why do they want that data?

RETURNING TO DEFINITIONS BRIEFLY

- "Restorative Work" is still not universally defined
- Only restorative if face to face? FGC only restorative if working with crime?
- Definitions are important for baselines and measuring data

APPROACHES TO DATA

Scary

GDPR & Data Protection,
Commissioning,
linked to money

Boring

Not important,
practice is priority, dry
and uninteresting

Useful

Evaluation, evidence,
proof of work,
identifying gaps,
areas to improve

WHERE IS THE DATA?

- Majority of evaluations do not discuss data used.
- Service data is not publicly available.

IS DATA IMPORTANT?

- Practitioners are Relationship & Practice Focused
- Minimal recording policies used
- Not doing assessments or making judgements
- It's the service users journey
- Recording & Monitoring opinions and practice vary

ALL SERVICES RECORD DATA

- Data is quantitative and qualitative
- Laws, rules and regulations – accountability?
- Data is collected / used at different systemic levels
- There is a timeline of data collection
- There is no overarching policy on restorative data

TIMELINE OF RESTORATIVE SERVICE DATA COLLECTION



Referral

Consent.
Personal Information.
Demographic data.
Information sharing.
Case type.
Pre-referral VCOP trigger

Case Work

Practitioner performance.
Time scales.
Process costs.
Risk assessment.
Baseline measurements.

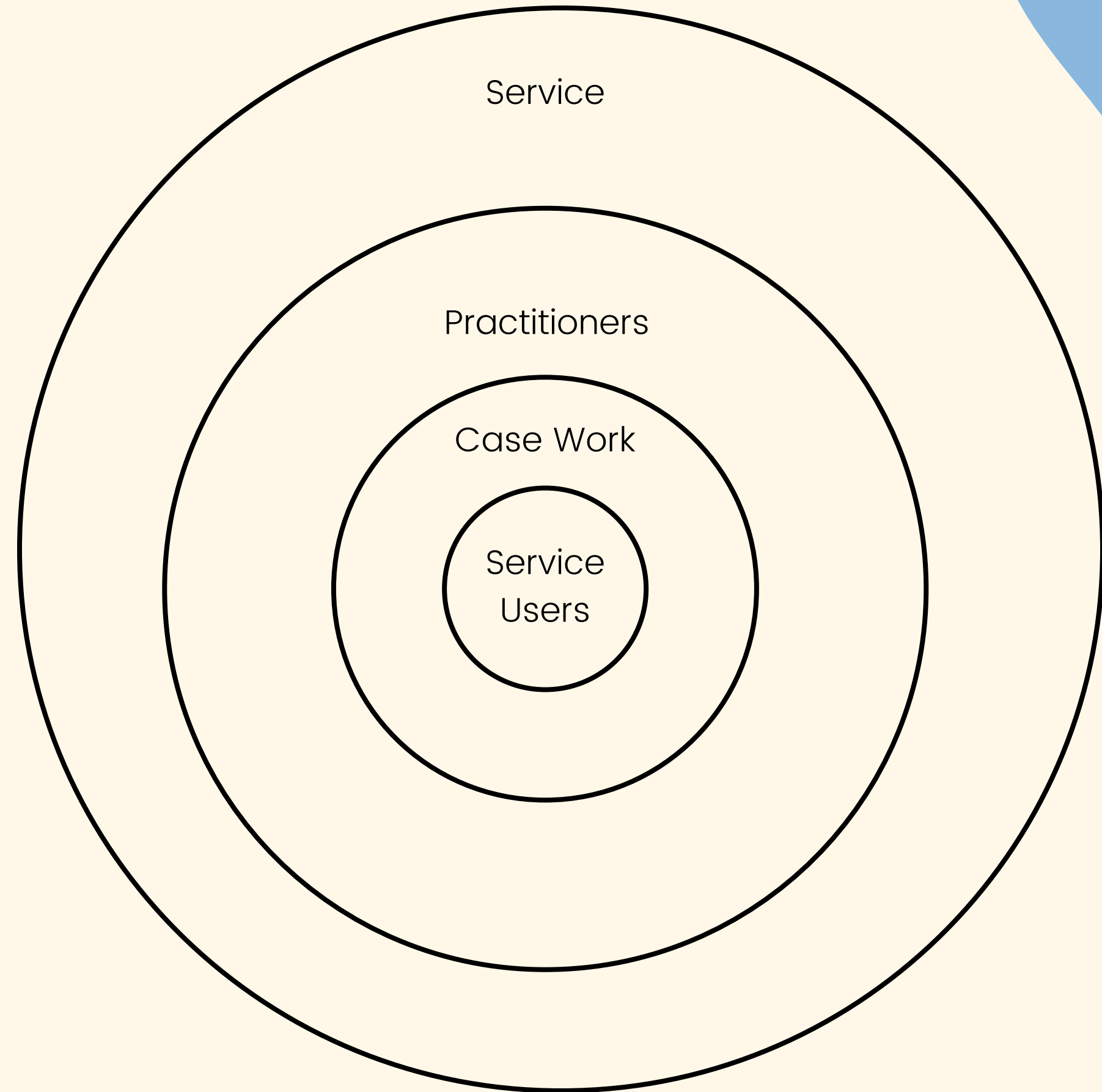
Intervention

Outcomes achieved.
Plans agreed.
Engagement.
Remorse or apology.
Review(s) of plans

Evaluation

Participant feedback.
Internal evaluation.
Peer evaluation.
External evaluation.
Academic evaluation.
Meta-analysis.
Systematic review.

DATA LEVELS



ANALYSIS OF 6 PCC REPORTING TEMPLATES

- Language varies across templates.
- Descriptive Crime and EDI data categories vary
- Outcome, Feedback & Satisfaction definitions vary
- Restorative Processes measured differently
- General format and contents varied significantly

HOW IS RECORDING & MONITORING TAKING PLACES?

- Simple count data, some percentages
- In CJS a focus on victim data
- Case attrition and turnover
- Used for internal comparison over time
- Case studies provided
- Service data: Financials, Staffing

IMPLICATIONS OF THESE FINDINGS?

- Definitions need to be agreed and applied
- Reporting should be standardised
- Comparison of data should be enabled
- Evaluations and meta-analyses must clarify data
- Values based measurement not being used

WORK ON THE NUMBERS
WILL TAKE TIME.

**Need to include multiple stakeholders,
explore best practice, agree definitions,
identify and utilise a single approach.**

Is there anything that can be done sooner?

NATIONAL REPOSITORY OF RESTORATIVE CASE STUDIES

Numbers get the head, words get the heart.

A conservative estimate:

70+ FGC services

39 PCCs in England and Wales

150+ youth offending services

100 schools using restorative approaches.

One case study a year =
350 case studies annually

Evidence of success in different geographical areas, with different services, referral types, and interventions from multiple practitioners working with service users and their communities.

Implications for funding, logistics, system management, confidentiality, attribution to services.

THANK YOU



FOR LISTENING!



Feel free to send in any questions to:
benfisk@connect.glos.ac.uk