



This is supplemental material of the following published document and is licensed under Creative Commons: Attribution-Noncommercial-No Derivative Works 4.0 license:

**Lynch, Kenneth ORCID logoORCID: <https://orcid.org/0000-0002-5296-2864> (2022) Communities, development and what lessons Mwalimu and Madiba have for us in the 21st Century. In: Inaugural Lecture, 30th March 2022, University of Gloucestershire.**

EPrint URI: <https://eprints.glos.ac.uk/id/eprint/10890>

#### **Disclaimer**

The University of Gloucestershire has obtained warranties from all depositors as to their title in the material deposited and as to their right to deposit such material.

The University of Gloucestershire makes no representation or warranties of commercial utility, title, or fitness for a particular purpose or any other warranty, express or implied in respect of any material deposited.

The University of Gloucestershire makes no representation that the use of the materials will not infringe any patent, copyright, trademark or other property or proprietary rights.

The University of Gloucestershire accepts no liability for any infringement of intellectual property rights in any material deposited but will remove such material from public view pending investigation in the event of an allegation of any such infringement.

PLEASE SCROLL DOWN FOR TEXT.

You're going to this event! [View your order.](#)

MAR

30

What lessons do Mwalimu and Madiba have for us in the 21st Century?

by [University of Gloucestershire](#)

256 followers 

Following

Free

Free

Register

Date and time

Wed, 30 March 2022

16:30 – 17:30 BST

Location

Lecture Room - TC014

The Park

Cheltenham

GL50 2RH

[View Map](#)

**Communities, development and what lessons Mwalimu and Madiba have for us in the 21st Century. Presented by Professor Kenny Lynch.**

**About this event**

**Communities, development and what lessons Mwalimu and Madiba have for us in the 21st Century**

**Kenny Lynch, Professor of Development and Community at the University of Gloucestershire, presents his inaugural lecture.**

**The Lecture**

In his inaugural lecture, Kenny will explore his initial interests in research, which started with food production and supply in Tanzania, where the country experimented with a distinctly African form of development under the initial presidency of Julius ‘Mwalimu’ Nyerere.

Later, Kenny’s teaching and research took him to other parts of the world, including several field trips of undergraduate students from Gloucestershire to South Africa to explore the legacy of

Apartheid in South Africa. There he learned with the students about the response to the challenges the country faced under the first democratic president, Nelson 'Madiba' Mandela.

He will explore the links between his early research and the work he is doing now, which focuses on what access to basic necessities like food and sanitation can tell us about the challenges faced by fast-growing cities. His lecture aims to explore some of the findings of this research, as well as what lessons can be learned from Mwalimu and Madiba for the 21st century.

### **The Speaker**

Following the completion of his MA in Geography at the University of Aberdeen, Kenny studied for his PhD in Geography at the University of Glasgow. Having undertaken academic appointments at the Universities of Glasgow, Aberdeen, and Kingston University, he joined the University of Gloucestershire in 2005, progressing from the role of Senior Lecturer in Geography to his current position as Professor of Development and Communities.

A Fellow of the Higher Education Academy and Royal Geographic Society, Kenny holds a wealth of experience as a peer reviewer for numerous international journals he has served on committees and panels of the Royal Geographical Society, the Geographical Association, The Australian Research Council, the South African National Research Foundation, as a trustee of the Diocese of Gloucester Academies Trust, and a currently serves as a member of the Editorial Boards for both the South African Geographical Journal and GEOVerse, an undergraduate journal of geography.

Kenny is an experienced PhD supervisor and examiner, and has published widely in international journals. His research focuses on the relationship between the city and countryside in the developing world where rapidly growing cities interrupt and mix identities, livelihoods, practices and attitudes. His work has focused on urban and peri-urban agriculture, zoonotic disease transmission in rapidly growing cities and access to sanitation.

As well as working with geographers, Kenny has also collaborated with sociologists, criminologists, economists and clinicians amongst others in his work, publishing research on learning and teaching, housing, restorative justice and street markets in the UK.

Admission is free.

We continue to be mindful of running events such as this with COVID-19 safety in mind. Please do not attend the lecture if you are unwell. We encourage the wearing of face coverings when moving around busy areas on campus, although you are not required to wear one during the lecture if you prefer. The lecture theatre is well ventilated, and hand sanitising stations are available for your use.





Tags

United Kingdom Events

Gloucestershire Events

Things to do in Cheltenham

Cheltenham Seminars

Cheltenham Community Seminars



Share with friends



Date and time

Wed, 30 March 2022  
16:30 – 17:30 BST

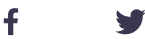
Location

Lecture Room - TC014  
The Park  
Cheltenham  
GL50 2RH  
[View Map](#)



University of Gloucestershire

Organiser of What lessons do Mwalimu and Madiba have for us in the 21st Century?



Following

Contact

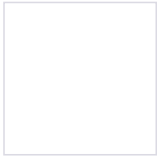
More events from this organiser

Stories About Listening

Wed, Apr 6, 4:30 PM

Lecture Room TC014 • The Park  
Free

University of Gloucestershire  
256 followers



Leadership for Sustainability: a new leadership paradigm for our times

Thu, Apr 7, 6:00 PM

University of Gloucestershire • Cheltenham  
Free

University of Gloucestershire  
256 followers

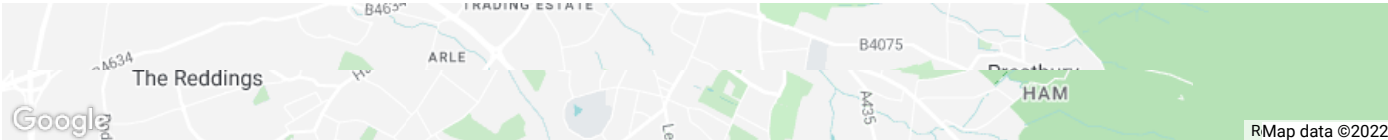
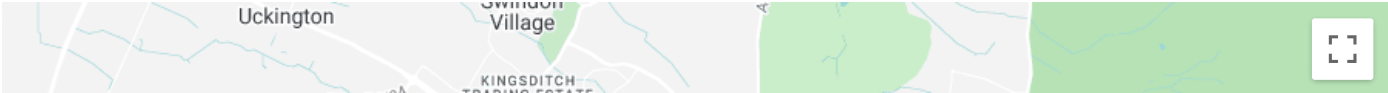


Unpacking the Multiple Meanings of Innovation for Sustainable Agriculture

Tue, Apr 26, 4:30 PM

Lecture Room TC014 • The Park  
Free

University of Gloucestershire  
256 followers



What lessons do Mwalimu and Madiba have for us in the 21st Century?

at

Lecture Room - TC014

The Park, Cheltenham, GL50 2RH



Other events you may like



Landscapes of Learning - Professor Jenny Hill

Wed, Jul 6, 6:30 PM

Lecture Room TC014 • The Park

Free

University of Gloucestershire

& 256 followers



;  
;  
;  
;

## Use Eventbrite

[How it Works](#)

[Pricing](#)

[Event Blog](#)

[Event Planner Forum](#)

## Plan Events

[Online Registration](#)

[Sell Event Tickets](#)

[Event Management Software](#)

## Find Events

[Browse Cheltenham Events](#)

[Get the Eventbrite App](#)

## Connect With Us

[Report This Event](#)

[Help Centre](#)

[Terms](#)

[Privacy](#)

[Accessibility](#)

[Community Guidelines](#)

