

NATURAL FLOOD MANAGEMENT

LETTING NATURE DO WHAT NATURE DOES



Chris Short, CCRI
University of Gloucestershire

So you know what to expect

- Expectations and scope
- 1. Starting at the top
- 2. Holding back the river
- 3. Being part of the solution
- Q&A



#CCRIIflood

Expectations

- Sensitive topic
- Still need flood defence
 - Additional to ...
 - In combination with ...
- Won't cover everything.



Outline main areas

- Clearly a very current topic
- Usual suspects in coverage
 - Scapegoats & protecting people over nature

Outline main areas

- Clearly a very current topic
- Usual suspects in coverage
 - Scapegoats & protecting people over nature
- Start at the top not the bottom



Source: Water White Paper

Outline main areas

- Clearly a very current topic
- Usual suspects in coverage
 - Scapegoats & protecting people over nature
- Start at the top not the bottom
- Partnership approach in Gloucestershire



Outline main areas

- Clearly a very current topic
- Usual suspects in coverage
 - Scapegoats & protecting people over nature
- Start at the top not the bottom
- Partnership approach in Gloucestershire
- Everyone can play a part

Starting at the top

- Rain will mostly fall on agricultural land
- Aim: Soak in not run off the surface
- What happens if it doesn't?



UNIVERSITY OF
GLOUCESTERSHIRE
at Cheltenham and Gloucester



DYLAN BRIGHT

Starting at the top

- Rain will mostly fall on agricultural land
- Aim: Soak in not run off the surface
- What happens if it doesn't?
- Not what the farmer wants
- So what can be done?





This is the conventional approach





UNIVERSITY OF
GLOUCESTERSHIRE
at Cheltenham and Gloucester

#rootsnotiron



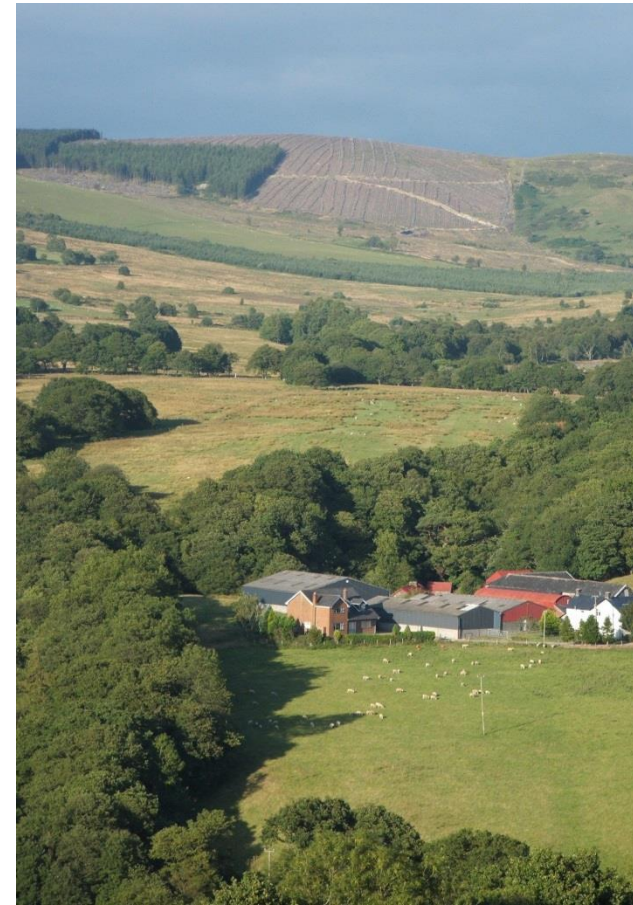


UNIVERSITY OF
GLOUCESTERSHIRE
at Cheltenham and Gloucester



Some comments on trees

- Where should they go?
- Where will we get them from?
- Who will look after them?



Hold back the river

- Damage from momentum
- Multiple small-scale structures
- Leaky dams





UNIVERSITY OF
GLOUCESTERSHIRE
at Cheltenham and Gloucester



Hold back the river

- Damage from momentum
- Multiple small-scale structures
- Leaky dams,
- Bunds



UNIVERSITY OF
GLOUCESTERSHIRE

at Cheltenham and Gloucester





UNIVERSITY OF
GLOUCESTERSHIRE

at Cheltenham and Gloucester



Hold back the river

- Damage from momentum
- Multiple small-scale structures
- Leaky dams,
- Bunds
- Attenuation areas



UNIVERSITY OF
GLOUCESTERSHIRE
at Cheltenham and Gloucester





UNIVERSITY OF
GLOUCESTERSHIRE

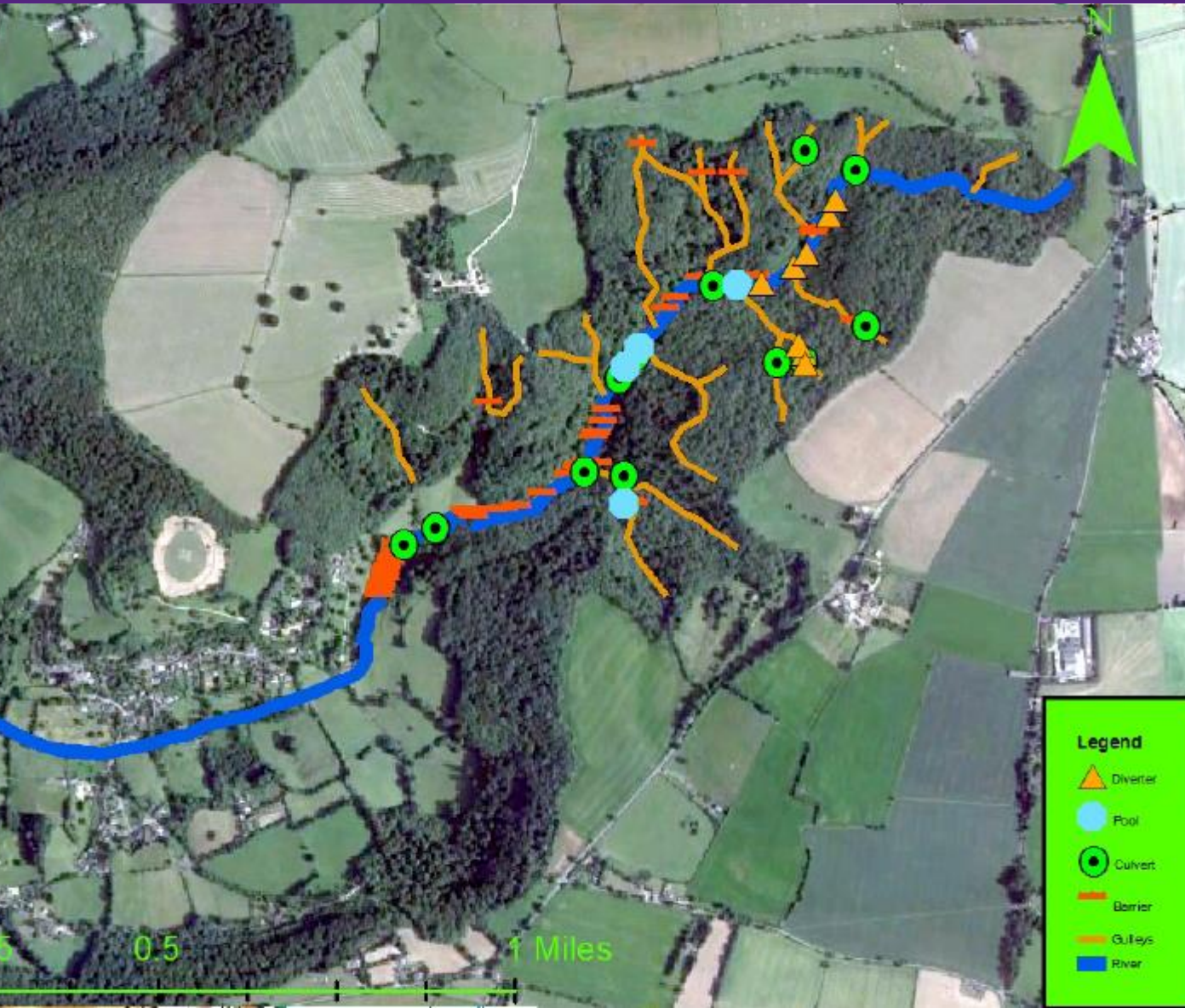
at Cheltenham and Gloucester



Hold back the river

- Damage from momentum
- Multiple small-scale structures
- Leaky dams, bunds
- Attenuation areas

- Collective impact, low cost and natural



Many
features
across
Stroud
valleys

....
that you
won't
notice.



UNIVERSITY OF
GLOUCESTERSHIRE

at Cheltenham and Gloucester



Being part of the solution

- Communities coming together



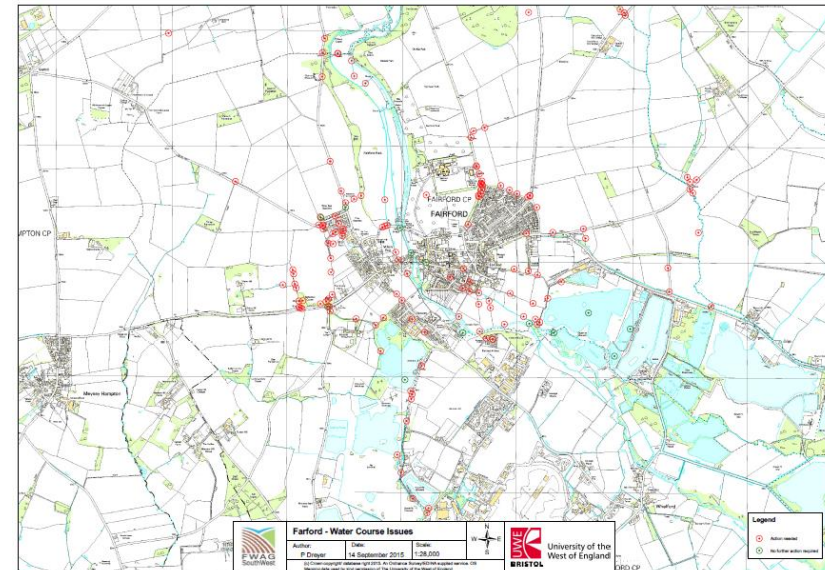
- Changes afoot in Victoria, London





Being part of the solution

- Alternative to hard surfacing front gardens
- Better communication
- Shared problem solving



Closing thoughts

- Joined up thinking, cumulative impact
- Complimenting existing defences
- Partnership is key
- Working with nature,
- We can all play a part in

LETTING NATURE DO WHAT NATURE DOES



UNIVERSITY OF
GLOUCESTERSHIRE

at Cheltenham and Gloucester



**THANK YOU, TIME FOR
QUESTIONS**