



This is a peer-reviewed, final published version of the following document, © 2019 The authors All rights Reserved. and is licensed under All Rights Reserved license:

Bundhoo, Dilshaad ORCID logoORCID: <https://orcid.org/0000-0003-0262-9868> and Lynch, Kenneth ORCID logoORCID: <https://orcid.org/0000-0002-5296-2864> (2019) Building WASH resilience for behavioural change: An interim research brief. In: Rural and Urban Sanitation Transformations (RUST) Steering Committee meeting and co-analysis workshop, 26th November 2019, Hyderabad, India.

Official URL: <http://eprints.glos.ac.uk/id/eprint/7642>

EPrint URI: <https://eprints.glos.ac.uk/id/eprint/7642>

Disclaimer

The University of Gloucestershire has obtained warranties from all depositors as to their title in the material deposited and as to their right to deposit such material.

The University of Gloucestershire makes no representation or warranties of commercial utility, title, or fitness for a particular purpose or any other warranty, express or implied in respect of any material deposited.

The University of Gloucestershire makes no representation that the use of the materials will not infringe any patent, copyright, trademark or other property or proprietary rights.

The University of Gloucestershire accepts no liability for any infringement of intellectual property rights in any material deposited but will remove such material from public view pending investigation in the event of an allegation of any such infringement.

PLEASE SCROLL DOWN FOR TEXT.

Building WASH resilience for behavioural change: An interim research brief

Background of the research

Building WASH (water, sanitation and hygiene) resilience in any area involves the process of understanding the **knowledge, attitudes and practices (KAP)** in context, implementing the **adequate services** corresponding to local needs and **maintaining** those services **sustainably**.

With the growing frequency and flows of migration and the ever-increasing negative effects of climate change intensifying the urbanisation pressure on policy makers, service providers and citizens, it is timely to develop **efficient and effective methods** of building **WASH resilience**.

One of the aims of this research is to deepen the understanding of KAP regarding WASH and from there build a tool to facilitate governance of WASH in fast-urbanising and socioeconomically and geographically heterogeneous contexts. There is evidence in the latest scientific research to suggest that behavioural changes towards WASH can be induced and motivated by understanding the people's perceptions and interests.

The aim of this interim report

This interim report is designed to help engage discussion for co-analysis and forms an essential part of the research designed in the interest of scientific rigour, practice-driven policy advice and a pragmatic approach to impactful research.



Figure 2 Map of the locations of the interviews with more vulnerable groups has been conducted



Figure 1 Untreated waste water near settlements in a peri-urban area of Hyderabad

Learning in Context

To enable an in-depth exploration of what to consider when devising WASH services in vulnerable and /or complex fast-changing contexts, we have used a quantitative (3200 households survey) and qualitative (interviews with 104 people from different vulnerable groups) approach focusing on two transects running across the megacity of Hyderabad:

- ☐ Transect A running along the Musi river from West to East.
- ☐ Transect B running from North-West to South-East.

This large scale data collection in Hyderabad will further both academic and practitioner understanding of the intricacies of WASH resilience in fast urbanising contexts faced with multiple compounding factors. It is hoped that

understanding how and why people maintain their relationships despite a range of socioeconomic and geographical differences will be a stepping

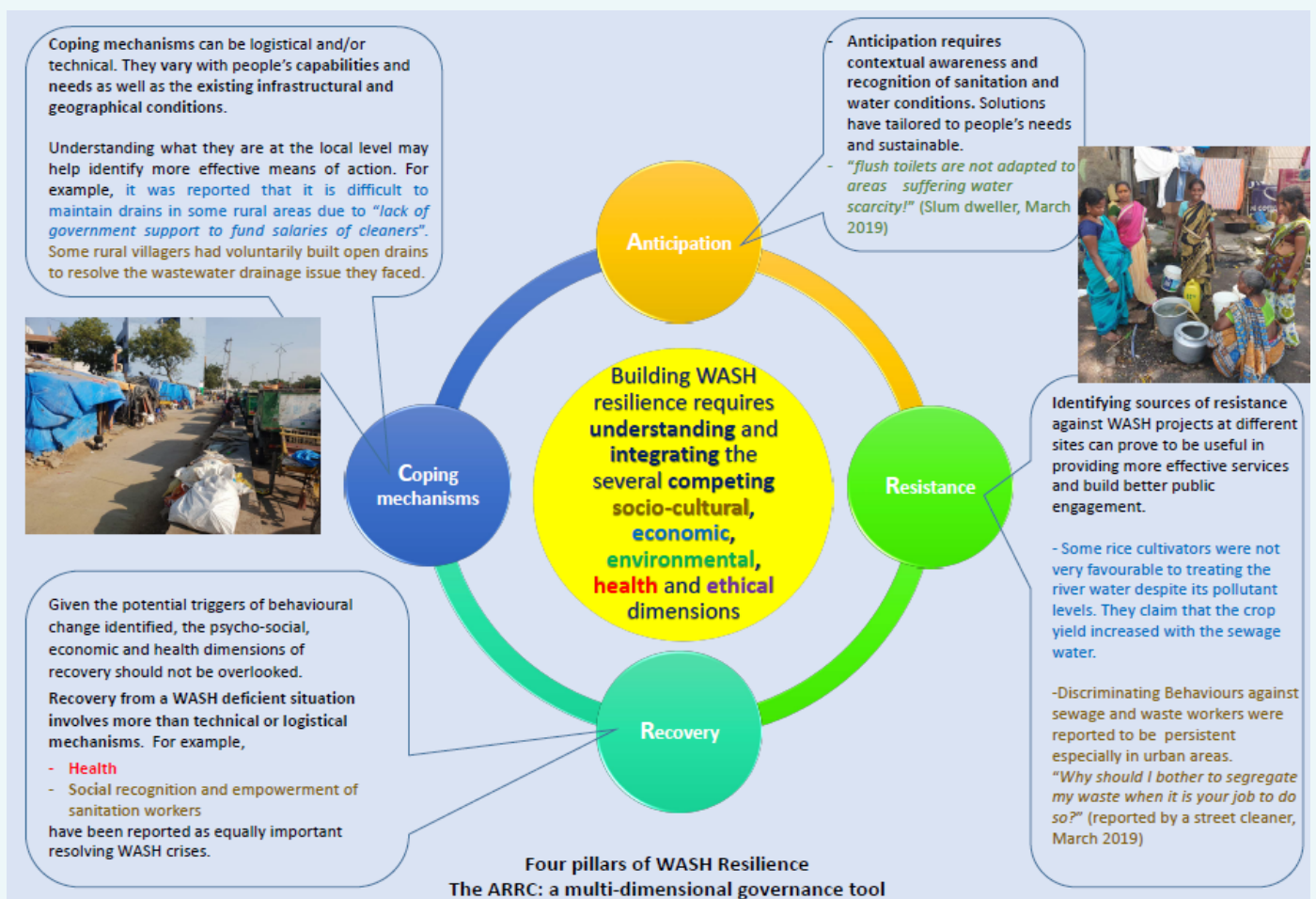
stone in providing guidance for establishing and operating long-term and resilient WASH services tailored to the needs of the residents.

A governance tool emerging from the research analyses

The survey data is showing two key findings:

- a. Much heterogeneity in the knowledge, attitudes and practices with regard to WASH amongst Hyderabad residents;
- b. Existence of pockets of informal settlements within the interstices of the formal settlement of the urban and peri-urban areas of Hyderabad.

Analysis of the interviews with the 104 people from vulnerable groups has revealed some congruence amongst the different stakeholders as to what the principal drivers and barriers to WASH resilience are. These findings call for a contextual and decentralised approach to building WASH resilience in the area. At this stage, we can define four key elements to approach WASH resilience.



Next stages

Co-analysis with stakeholders:

Once we discussed the findings outlined here, the RUST team will review and complete the research analysis and feedback to the stakeholders.

Publications and Dissemination through conferences, seminars and lectures.

RUST - Rurality as a vehicle for Urban Sanitation Transformation - is an Indian-UK research and impact consortium that aims to better understand and promote more integrated sanitation policy and planning between urban and rural areas in Indian cities.

<https://rustindia.wordpress.com/>

For more information, please contact: Dr Dilshaad Bundhoo at dbundhoo@glos.ac.uk or Dr Kenny Lynch at klynch@glos.ac.uk