



This is a peer-reviewed, final published version of the following document and is licensed under Creative Commons: Attribution 4.0 license:

Mills, Claire D ORCID: 0000-0003-4156-4593, De Ste Croix, Mark B ORCID: 0000-0001-9911-4355 and James, David V ORCID: 0000-0002-0805-7453 (2017) Linearity of the scale for mass and volume within the air displacement plethysmograph (BodPod): A Methodological Investigation. Sport and Exercise Medicine Open Journal, 3 (2). pp. 58-62. doi:10.17140/SEMOJ-3-149

Official URL: <http://openventio.org/OpenJournal/SportsMedicine.html>

DOI: 10.17140/SEMOJ-3-149

EPrint URI: <https://eprints.glos.ac.uk/id/eprint/4427>

Disclaimer

The University of Gloucestershire has obtained warranties from all depositors as to their title in the material deposited and as to their right to deposit such material.

The University of Gloucestershire makes no representation or warranties of commercial utility, title, or fitness for a particular purpose or any other warranty, express or implied in respect of any material deposited.

The University of Gloucestershire makes no representation that the use of the materials will not infringe any patent, copyright, trademark or other property or proprietary rights.

The University of Gloucestershire accepts no liability for any infringement of intellectual property rights in any material deposited but will remove such material from public view pending investigation in the event of an allegation of any such infringement.

PLEASE SCROLL DOWN FOR TEXT.

Research

*Corresponding author

Claire Mills, PhD

Senior Lecturer
Faculty of Applied Sciences
University of Gloucestershire
Oxstalls Campus, Gloucester
GL2 9HW, UK
Tel. +44 (0)1242 517156
E-mail: clairem@glos.ac.uk

Volume 3 : Issue 2

Article Ref. #: 1000SEMOJ3149

Article History

Received: March 15th, 2017

Accepted: June 20th, 2017

Published: June 22nd, 2017

Citation

Mills C, De Ste Croix MS, James D. Linearity of the scale for mass and volume within the air displacement plethysmograph (BOD POD): A methodological investigation. *Sport Exerc Med Open J*. 2017; 3(2): 58-62. doi: [10.17140/SEMOJ-3-149](http://dx.doi.org/10.17140/SEMOJ-3-149)

Copyright

©2017 Mills C. This is an open access article distributed under the Creative Commons Attribution 4.0 International License (CC BY 4.0), which permits unrestricted use, distribution, and reproduction in any medium, provided the original work is properly cited.

Linearity of the Scale for Mass and Volume within the Air Displacement Plethysmograph (BOD POD): A Methodological Investigation

Claire Mills, BA (Hons), PGCE (PE), MSc, FHEA, PhD*; Mark De Ste Croix, PhD; David James, PhD

School of Sport and Exercise, Faculty of Applied Sciences, University of Gloucestershire, Gloucester, GL2 9HW, UK

ABSTRACT

Introduction: In order to maintain the accuracy and reliability for both volume and mass measurements of the air displacement plethysmograph (BOD POD) on a day-to-day basis, quality assurance processes are undertaken. Given the importance of accurate estimation of body mass and body volume in determining body composition, the aim of this methodological investigation was to further examine the calibration approaches and to independently determine both the linearity and reliability of mass and volume measurements throughout the potential measurement range.

Methods: Routine calibration procedures for mass (sequentially add known masses ranging from 10-30 kg) range and volume (sequentially add known volume of balloons ranging from 49.900 L to 118.40 L) were conducted using BOD POD model 2000A (Life Measurement Inc. (LMI), Concord, CA, USA). Scatter plots between actual (known) against predicted (measurement) mass and volume values and bias and 95% limits of agreement plots were produced to illustrate the agreement, and paired *t*-tests to determine significant differences between the volumes.

Results: Results revealed that for all mass measurements between 10-30 kg the known mass and measured mass were in agreement. With respect to all volume measurements, the predicted (measured) volume differed from the actual (known) volume by as little as 0.2 L and as much as 0.9 L. There was a difference between actual (known) (mean \pm SD=65.1 \pm 35.9 l) and predicted (measured) (64.7 \pm 35.8 L), $t_9=6.35$ $p<0.01$.

Conclusion: One might question the relevance of only being able to calibrate mass to a maximum of 30 kg, when body mass of adult participants certainly exceed 30 kg. Results from the adapted volume calibration trial using balloons revealed underreporting of predicted (measured) volumes by 0.4 L. However, on the basis of this methodological investigation, it is possible to be broadly confident with the linearity and reliability of both mass and volume measurement outcomes from the BOD POD involving a reasonable level of rigour.

KEY WORDS: Air displacement plethysmograph; BOD POD; Linearity; Method; Mass; Volume; Reliability.

INTRODUCTION

The air displacement plethysmograph or its trade name BOD POD® (BOD POD) which is more familiarly known uses the inverse relationship between pressure (P) and volume (V) to derive body volume of a participant from a 750 L fibreglass shell that comprises of two chambers.¹ Firstly, the test chamber that accommodates the participant during testing and secondly, the reference chamber that contains instrumentation for measuring changes in pressure between the two chambers.²⁻⁴ The moulded front seat forms a common wall separating the test and reference chambers, each with an approximate volume of \approx 450 and 300 L respectively with a vol-

ume-perturbing element (a moving diaphragm) connecting the two chambers⁵ as shown in Figure 1. The volume of a participant body is measured indirectly through the application of relevant physical laws (Boyle's Law) by subtracting the volume of air it displaces inside an enclosed chamber when the participant is inside, from the volume of air in the chamber when it is empty.^{4,6-8}

With the procedural difficulties associated with hydrostatic weighing, the introduction of air displacement plethysmography in 1995 gained popularity among body composition researchers.^{3,8,10} This is mainly attributable to the BOD POD offering several viable operating alternatives to hydrostatic weighing.^{11,12} For instance, by replacing the intimidating inconvenience of water immersion (~30 minutes) with the comfort of air (~5 minutes), can place fewer demands on the participant.^{3,5,14} As a result, there is potentially a wider clinical application including athletes, children, obese, older adults and people with disabilities.^{8,14,15} However, since its development, researchers have reported varying degrees of reliability and validity issues.¹⁶ For instance, Collins et al¹⁷ reported reliability values of 0.994 and a technical error of measurement of 0.448% and discovered that BOD POD whole body density measurements (1.064 ± 0.002 g.ml⁻¹) were significantly greater ($p < 0.05$) than hydrostatic weighing whole body density (1.060 ± 0.002 g.ml⁻¹), concluding that the BOD POD was over predicting whole body density.¹⁷ Interestingly, Lockner et al¹⁸ found there was a significant difference between average BOD POD whole body density (1.0466 ± 0.0187 g.ml⁻¹) and average hydrostatic weighing whole body density (1.0403 ± 0.0187 g.ml⁻¹) ($p < 0.0005$). From a practical point of view, there have been even reports that obese participants and large athletes on occasion have struggled to sit inside and close the BOD POD.

As part of the quality assurance process, the BOD POD was rigorously tested by the manufacturers, Life Measurement Inc. (LMI), Concord, CA, USA, to establish accuracy, reliability and linearity for both volume and mass measurements.^{2,9} These quality assurance processes are undertaken by the manufacturer

before to distribution and installation of the BOD POD, where multiple tests of 20 kg, 40 kg, 60 kg and 80 kg masses and 30 L, 50 L and 90 L volumes are conducted.⁹ However, in order to maintain the accuracy of the BOD POD on a day-to-day basis, further quality control procedures are required *in situ*.⁹ These quality control procedures consist of a mass and volume calibration which are conducted before every testing bout and are designed to check the linearity and reliability of the BOD POD system.⁹ These calibration techniques were executed following the manufacturer's automated process by inputting measured values *via* the user interface. The procedure required the primary investigator to perform sequential steps without interruptions with equipment provided by LMI, Concord, CA, USA.¹⁸

METHODS

Calibration measurement protocols for both mass and volume were rigorously followed in accordance with the step by step instructions given on the BOD POD (BOD POD model 2000A, LMI, Concord, CA, USA) system computer. This procedure required the researcher to perform five sequential calibration attempts without interruptions for both mass and volume.

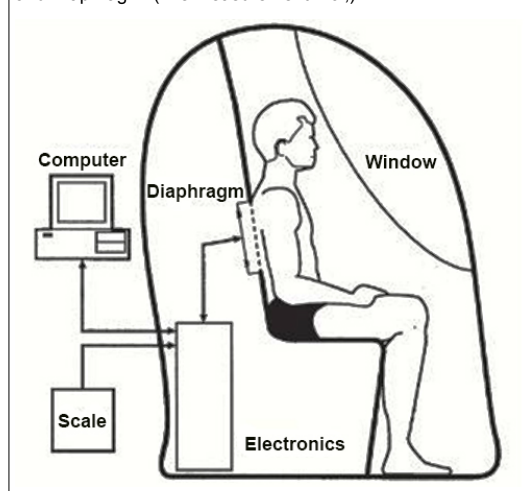
Measurement Procedure for Mass

The routine mass calibration procedure was followed and the researcher was able to sequentially add known (actual) calibration masses ranging between 10 kg to 30 kg. Although not ideal, given the likely range of measurements in practice, the relationship between actual and predicted mass could be plotted (0-30 kg) and extrapolated linearly to likely measurement values within a realistic range.

Measurement Procedure for Volume

Following the routine volume calibration procedure where calibration is repeated if two of the five mean volume measures are not between 49.900 L and 50.100 L.⁹ The researcher was able to

Figure 1: General Arrangement of Chambers, Participants and Diaphragm. (Life Measurement Inc.,)⁹



sequentially add up to ten known (actual) volumes corresponding to 118.40 L (i.e., 11.84 L, 23.68 L, 35.52 L, 47.36 L, 59.20 L, 71.04 L, 82.88 L, 94.72 L, 106.56 L and 118.40 L). The known volumes were established using balloons that were each inflated with 12 L of air using a Morgan Medical 3 L calibration syringe (Ferrari's Cardio Respiratory Ref 0413, Morgan Medical Ltd., Rainham, Kent, England) (i.e., 4x3 L=12 L volume of air into each balloon). Unfortunately due to the practicalities of the inflation procedures, releasing of the syringe and tying of each balloon resulted in χ 0.16 L of air being lost. Each balloon was verified as having a known volume of 11.84 l through the normal BOD POD calibration process of 5 volume measurements in succession.

Data analysis included a scatter plot of actual (known) against predicted (measured) mass values was produced to illustrate the agreement between the predicted mass and actual mass measures and extrapolated between 40 to 120 kg (Figure 2).

Figure 3 illustrates the agreement between the actual (known) against predicted (Manufacturer's calibration equipment included two 10 kg calibration National Institute of Standards and Technology (NIST), Gaithersburg, MD, USA weights that are used on the digital weighing scale to calibrate mass and a 50.110 L calibration cylinder that is used within the BOD POD chamber to calibrate volume). Given the central importance of accurate estimation of body mass and body volume in determining body composition, the aim of this methodological investigation it is crucial to independently review both the linearity and reliability of mass and volume measurements for the BOD POD and to further examine the calibration approaches throughout the potential measurement range (measured) volume values and the linearity through the likely (practical) measurement range. The bias and 95% limits of agreement between the actual (known) against the predicted (measured) volumes are illustrated in Figure 4. Paired *t*-tests were undertaken to determine whether significant differences were present between the known and measured volumes.

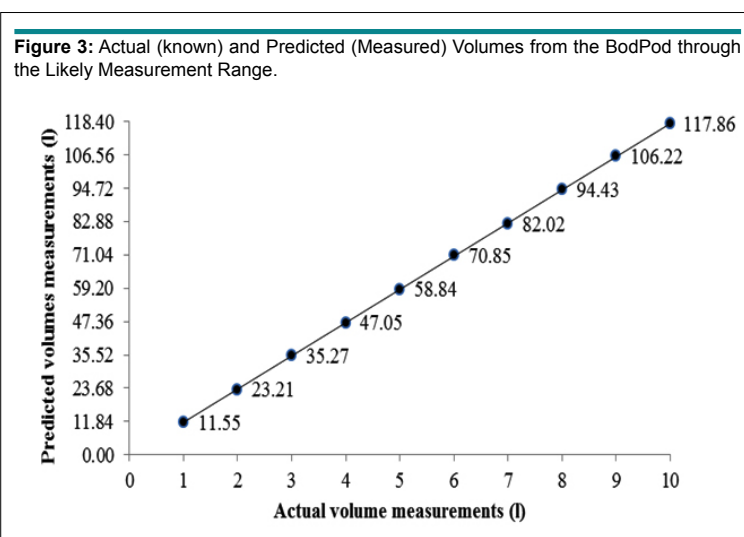
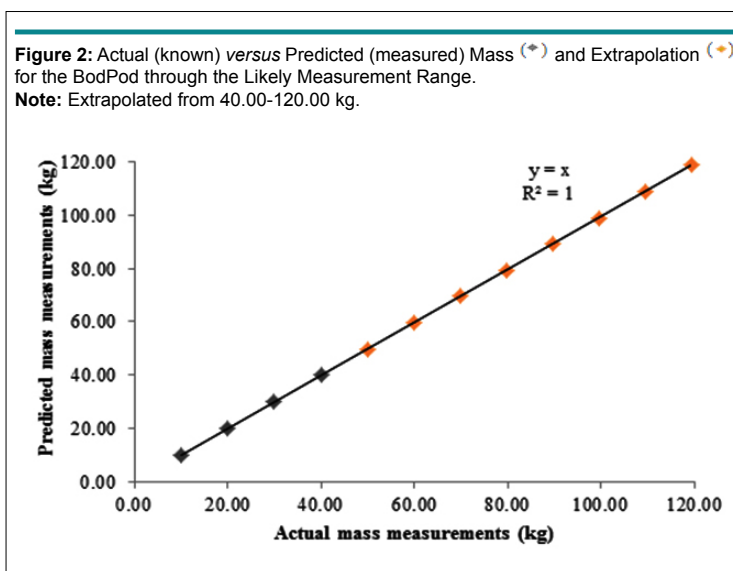
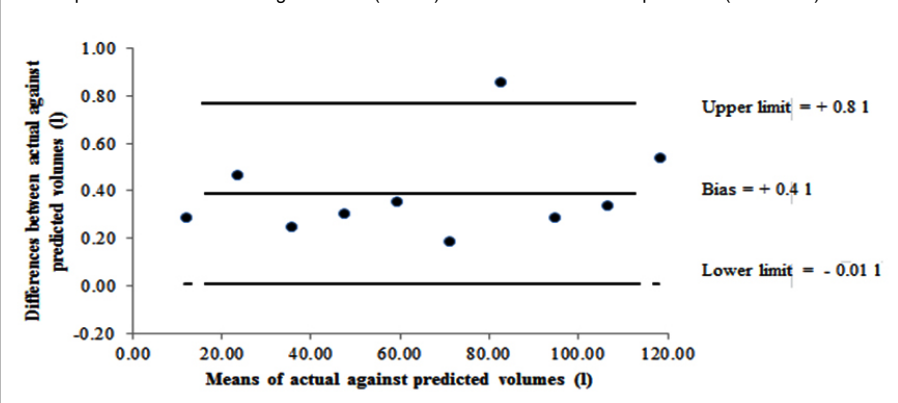


Figure 4: Bland and Altman Plot Showing Bias and 95% Limits of Agreement between the Actual (known) Against the Predicted (Measured) Volume for BodPod.

Note: A positive bias indicates higher actual (known) values in relation to the predicted (measured) values.



RESULTS

Results revealed that for all mass measurements between 10-30 kg the known mass and measured mass were in agreement (Figure 2). Furthermore, measures of mass between 40-120 kg extrapolated (Figure 3) to estimate the value of masses outside the range tested.

Results revealed that for all volume measurements, the predicted (measured) volume differed from the actual (known) volume by as little as 0.2 L and as much as 0.9 L (Figure 3). When comparing the agreement between the actual (known) volumes against the predicted (measured) volumes, results indicated systematic bias whereby the predicted (measured) volumes were underreported compared with the actual (known) volumes (Figure 4). There was a difference between actual (known) (mean \pm SD=65.1 \pm 35.9 L) and predicted (measured) (64.7 \pm 35.8 L), $t_9=6.35$ $p<0.01$.

CONCLUSION

With regards to mass, the calibration masses from 10-30 kg were in agreement and in line with the BOD POD system quality control process when checking mass linearity and reliability.⁹ However, one might question the relevance of only being able to calibrate a measurement tool to a maximum of 30 kg, especially when the body mass of participant's are certainly in excess of 30 kg. As LMI, Concord, CA, USA, calibration equipment consists of two 10 kg calibration NIST weights for the calibration process on the digital weighing scale, this does pose the question whether the BOD POD system is designed to provide operator ease when lifting relatively light weights repeatedly or whether it checks the linearity across the mass scale. Similarly the reliability and linearity of the volume scale was measured within the BOD POD system at 30 L, 50 L and 90 L. Results from the adapted volume calibration trial using balloons revealed underreporting of predicted (measured) volumes by 0.4 L, which slightly exceeds the LMI, Concord, CA, USA, recommended calibration range between 0.01-0.21 L.⁹ Given the importance of

accurate estimation of body volume in determining body composition, it is questionable why LMI, Concord, CA, USA only provide a 50.110 L calibration cylinder and again poses the question of operator ease *versus* linearity. It is unfortunate that there is no facility to independently test the BOD POD for the linearity of the mass and volume scale, therefore conducting quality control procedures throughout the potential measurement range (in relation to the population sample) is something that should be taken into account in future research. On the basis of this methodological investigation however, it is possible to be broadly confident with the linearity and reliability of mass and volume measurement outcomes throughout the measurement range from the BOD POD involving a reasonable level of rigour.

CONFLICTS OF INTEREST

The authors declare that they have no conflicts of interest.

REFERENCES

- McArdle WD. Body composition assessment. In: McArdle WD, Katch FI, Katch VL, eds. *Exercise Physiology: Energy, Nutrition and Human Performance*. 6th ed. New York, USA: Lippincott, Williams & Williams; 2006.
- Dempster P, Aitkens S. A new air displacement method for the determination of human body composition. *Med Sci Sports Exerc*. 1995; 27(12): 1692-1697.
- Maddalozzo GF, Cardinal BJ, Snow CM. Concurrent validity of the BOD POD and dual energy x-ray absorptiometry techniques for assessing body composition in young women. *J Am Diet Assoc*. 2002; 102(11): 1677-1679. doi: [10.1016/S0002-8223\(02\)90358-5](https://doi.org/10.1016/S0002-8223(02)90358-5)
- Fields DA, Higgins PB, Hunter GR. Assessment of body composition by air-displacement plethysmography: Influence of body temperature and moisture. *Dyn Med*. 2004; 3(3): 1-7. doi: [10.1186/1476-5918-3-3](https://doi.org/10.1186/1476-5918-3-3)

5. Fields DA, Goran MI. Body composition techniques and the four-compartment model in children. *J Appl Physiol* (1985). 2000; 89(2): 613-620.
6. Vescovi JD, Zimmerman SL, Miller WC, Fernhall BO. Effects of clothing on accuracy and reliability of air displacement plethysmography. *Med Sci Sports Exerc*. 2002; 34(2): 282-285.
7. Heymsfield SB, Lohman TG, Wang Z, Going SB. *Human Body Composition*. 2nd ed. Champaign, IL, USA: Human Kinetics; 2005.
8. Hull HR, Fields DA. Effect of short schemes on body composition measurements using air-displacement plethysmography. *Dyn Med*. 2005; 4(1): 1-8. doi: [10.1186/1476-5918-4-8](https://doi.org/10.1186/1476-5918-4-8)
9. Life Measurement Inc. BOD POD® body composition tracking system. Operators Manual. 2006. Web site. http://www.taq.com.mx/documentos_productos/1348613957.pdf. Accessed March 14, 2017.
10. Buchholz AC, Majchrzak KM, Chen KY, Shankar SM, Buchowski MS. Use of air displacement plethysmography in the determination of percentage of fat mass in African American children. *Pediatr Res*. 2004; 56(1): 47-54. doi: [10.1203/01.PDR.0000130477.05324.79](https://doi.org/10.1203/01.PDR.0000130477.05324.79)
11. Millard-Stafford ML, Collins MA, Evans EM, Snow TK, Cureton KJ, Roskopf LB. Use of air displacement plethysmography for estimating body fat in 4 compartment model. *Med Sci Sports Exerc*. 2001; 33(8): 1311-1317.
12. Fields DA, Goran MI, McCroy MA. Body composition assessment via air-displacement plethysmography in adults and children: A review. *Am J Clin Nutr*. 2002; 75(3): 453-467.
13. Yee AJ, Fuerst T, Salamone L, et al. Calibration and validation of an air-displacement plethysmography method for estimating percentage body fat in an elderly population: A comparison among compartmental models. *Am J Clin Nutr*. 2001; 74(5): 637-642.
14. Hoffman CJ, Hildebrandt LA. Use of the air displacement plethysmograph to monitor body composition: A beneficial tool for dietitians. *J Am Diet Assoc*. 2001; 101(9): 986-987. doi: [10.1016/S0002-8223\(01\)00242-5](https://doi.org/10.1016/S0002-8223(01)00242-5)
15. Wells JC, Fuller NJ. Precision of measurement and body size in whole body air displacement plethysmography. *Int J Obes Relat Metab Disord*. 2001; 25(8): 1161-1167.
16. Wagner DR, Heyward VH, Gibson AL. Validation of air displacement plethysmography for assessing body composition. *Med Sci Sports Exerc*. 2000; 32(7): 1339-1344. doi: [10.1097/00005768-200007000-00023](https://doi.org/10.1097/00005768-200007000-00023)
17. Collins MA, Millard-Stafford ML, Sparling PB, et al. Evaluation of the BOD POD for assessing body fat in collegiate football players. *Med Sci Sports Exerc*. 1999; 31(9): 1350-1356. doi: [10.1097/00005768-199909000-00019](https://doi.org/10.1097/00005768-199909000-00019)
18. Lockner DW, Heyward VH, Baumgartner RN, Jenkins KA. Comparison of air-displacement Plethysmography, hydrodensitometry and dual X-ray absorptiometry for assessing body composition of children 10 to 18 years of age. *Ann N Y Acad Sci*. 2000; 904: 72-78. doi: [10.1111/j.1749-6632.2000.tb06423.x](https://doi.org/10.1111/j.1749-6632.2000.tb06423.x)